

EAST CENTRAL COLLEGE

# Enrollment Report

## 2015 Summer

**Today's date:** Mon, 18 May 2015



**Comparable date:** Mon, 19 May 2014

**Previous week date:** Mon, 11 May 2015

This report is only concerned with students enrolled in and courses offering **college credit** for the current data.

**Note:** this document is for internal use only.

### Quick Enrollment Summary

<b>Total Headcount:</b>		<b>5.2%</b>	<b>Total Credit Hours:</b>		<b>5.7%</b>
-------------------------	---	-------------	----------------------------	---	-------------

**Days to start of term: 14**

### Contact

Questions and comments may be directed to the ECC IR department at [institutionalresearch@eastcentral.edu](mailto:institutionalresearch@eastcentral.edu), or you may call **Bethany Lohden**, Director of Institutional Research, Assessment and Planning, on 6503.

EAST CENTRAL COLLEGE

# Enrollment Report

## 1. Enrollment

### 1.1. Total Enrollment

#### Headcount

	Total
15/SU	1045
14/SU	1102
+/- DIFF	<b>-57</b>
% DIFF	<b>-5.2%</b>
% PW	<b>-1.2%</b>

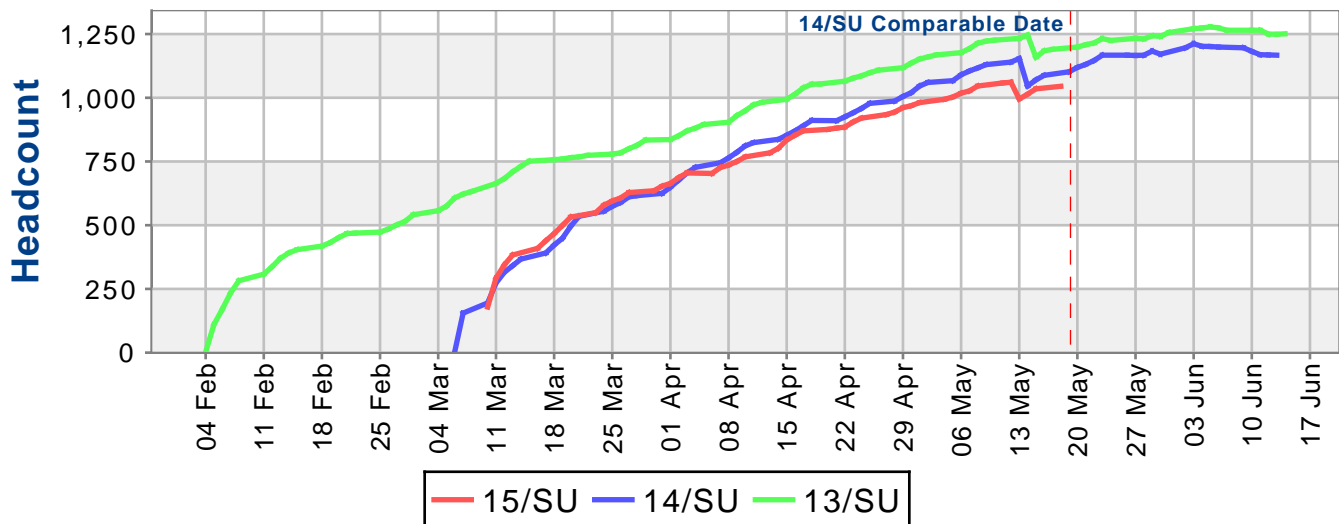
#### Credits

	Total
15/SU	5186
14/SU	5502
+/- DIFF	<b>-316</b>
% DIFF	<b>-5.7%</b>
% PW	<b>-2.3%</b>

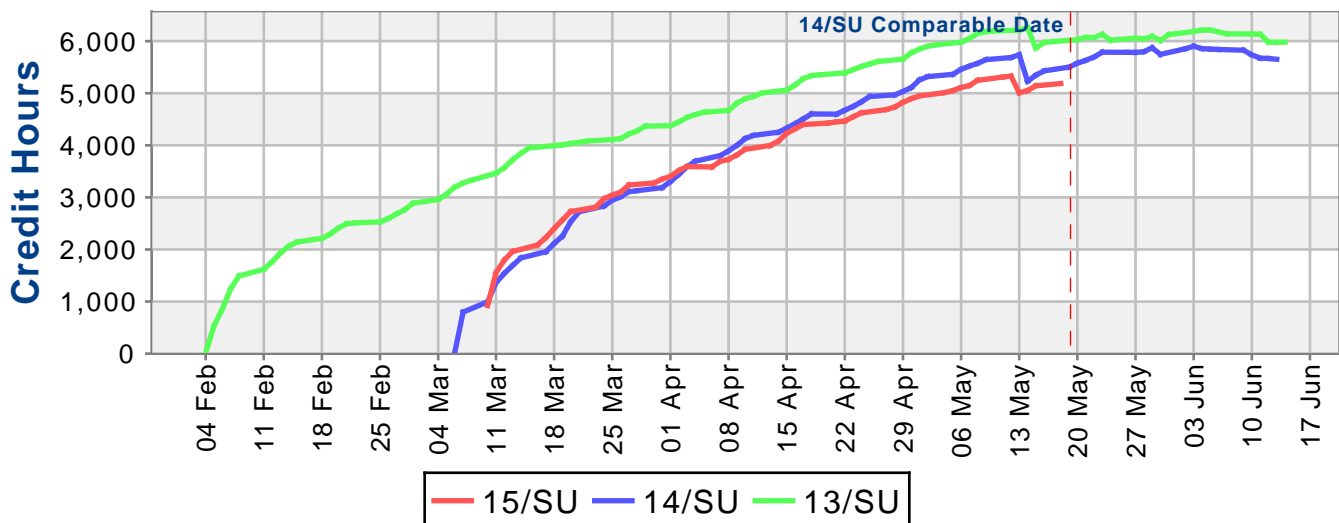
Q. If there are 100 days to go to the start of term and we have enrolled 950 students how do we determine if we are up or down compared to last year?

A. We look to see how many students we enrolled on the 100th day from the start of the same semester last year. This date will be the comparable date. However, if we started enrolling much earlier this semester than last, and a comparable date cannot be

### Total Headcount Trend



### Total Credit Hours Trend



EAST CENTRAL COLLEGE

# Enrollment Report

## 1.2. FTE

### FTE

	FTE
15/SU	864
14/SU	917
+/- DIFF	<b>-53</b>
% DIFF	<b>-5.7%</b>
% PW	<b>-2.3%</b>

FTE: (Full-time Equivalency) Calculated by dividing total credit hours by 6.

## 1.3. Day & Evening

### Headcount

	Day	Night	Both
15/SU	447	177	421
14/SU	519	179	404
+/- DIFF	<b>-72</b>	<b>-2</b>	<b>17</b>
% DIFF	<b>-13.9%</b>	<b>-1.1%</b>	<b>4.2%</b>
% PW	<b>-4.9%</b>	<b>-7.8%</b>	<b>6.3%</b>

### Credits

	Day	Night	Both
15/SU	2355	789	2042
14/SU	2710	784	2008
+/- DIFF	<b>-354</b>	<b>5</b>	<b>34</b>
% DIFF	<b>-13.1%</b>	<b>0.6%</b>	<b>1.7%</b>
% PW	<b>-4.5%</b>	<b>-9.8%</b>	<b>3.7%</b>

Day: Student's courses all start between anytime A.M. & 4:59 P.M.

Evening: Student's courses all start between 5:00 P.M & 11:59 P.M.

Both: A combination of day, evening and other classes like arranged ones. Also includes web-based learning.

## 1.4. Enrollment Status

### Headcount

	Full Time	Part Time
15/SU	482	563
14/SU	513	589
+/- DIFF	<b>-31</b>	<b>-26</b>
% DIFF	<b>-6.0%</b>	<b>-4.4%</b>
% PW	<b>-2.8%</b>	<b>0.2%</b>

### Credits

	Full Time	Part Time
15/SU	3302	1883
14/SU	3468	2034
+/- DIFF	<b>-165</b>	<b>-151</b>
% DIFF	<b>-4.8%</b>	<b>-7.4%</b>
% PW	<b>-2.7%</b>	<b>-1.8%</b>

Full-Time: 6 or more hours; Part-Time: Less than 6 hours

## 1.5. Paid Status

### Headcount

	FT Paid	FT Not Paid	PT Paid	PT Not Paid
15/SU	475	7	546	17
14/SU	500	13	568	21
+/- DIFF	<b>-25</b>	<b>-6</b>	<b>-22</b>	<b>-4</b>
% DIFF	<b>-5.0%</b>	<b>-46.2%</b>	<b>-3.9%</b>	<b>-19.0%</b>
% PW	<b>14.7%</b>	<b>-91.5%</b>	<b>29.1%</b>	<b>-87.8%</b>

### Credits

	FT Paid	FT Not Paid	PT Paid	PT Not Paid
15/SU	3254	48	1829	54
14/SU	3378	89	1965	69
+/- DIFF	<b>-124</b>	<b>-41</b>	<b>-136</b>	<b>-15</b>
% DIFF	<b>-3.7%</b>	<b>-46.1%</b>	<b>-6.9%</b>	<b>-21.7%</b>
% PW	<b>15.0%</b>	<b>-91.5%</b>	<b>27.1%</b>	<b>-88.7%</b>

FT: Full-Time; PT: Part-Time

EAST CENTRAL COLLEGE

# Enrollment Report

## 2. Student Types

### 2.1. Enrollment by Student Type

#### Headcount

	15/SU	14/SU	+/- DIFF	% DIFF	% PW
Dual Credit*	0	0	0	No data	No data
Dual Tech Credit*	0	0	0	No data	No data
First Time	64	61	3	4.9%	-12.3%
Transfer	56	51	5	9.8%	-6.7%
Continuing	779	822	-43	-5.2%	0.3%
Returning	146	168	-22	-13.1%	-1.4%
Total	1045	1102	-57	-5.2%	

#### Credits

	15/SU	14/SU	+/- DIFF	% DIFF	% PW
Dual Credit*	0	0	0	No data	No data
Dual Tech Credit*	0	0	0	No data	No data
First Time	352	299	54	17.9%	-11.1%
Transfer	265	265	0	0.0%	-10.8%
Continuing	3863	4180	-317	-7.6%	-0.6%
Returning	704	757	-52	-6.9%	-3.7%
Total	5184	5501	-317	-5.8%	

\*Due to the constraints of the above table (see note below), please refer to Section 2.3 for a true representation of dual credit and dual tech credit data.

Note each student type is mutually exclusive of all others; e.g., a dual credit will only be counted in the dual credit category even though the student may also be taking a dual tech credit course.

First Time: Students enrolling in classes for the first time at ECC.

Transfer: Students transferring for the first time to ECC.

Continuing: Students who were enrolled in the previous Spring term and who have returned to take classes this term.

Returning: Former ECC students who were not enrolled in the previous Spring term, but who have enrolled in classes this term.

### 2.2. First Time Degree Seeking Students

#### Headcount

First Time Degree Seekers	
15/SU	35
14/SU	34
+/- DIFF	1
% DIFF	2.9%
% PW	-7.9%

To be considered a first time degree seeking student a person must meet the following criteria:

1. ECC is the first college they have attended since graduating from high school.
2. Current term is their first at ECC after high school graduation. However if it is the Fall term and the student attended the college in the summer of that year then they are still considered 'first time'.
3. The student is enrolled in a program that will lead to an award of a certificate or a degree.



# Enrollment Report

## 2.3. Dual Credit

### Headcount

	15/SU	14/SU	+/- DIFF	% DIFF	% PW
Bourbon	0	0	0	No data	No data
Union	0	0	0	No data	No data
Washington	0	0	0	No data	No data
Steelville	0	0	0	No data	No data
Owensville	0	0	0	No data	No data
New Haven	0	0	0	No data	No data
Rolla	0	0	0	No data	No data
Hermann	0	0	0	No data	No data
Sullivan	0	0	0	No data	No data
St Francis	0	0	0	No data	No data
St Clair	0	0	0	No data	No data
Belle	0	0	0	No data	No data
Cuba	0	0	0	No data	No data
Viburnum	0	0	0	No data	No data
Linn	0	0	0	No data	No data
Dual Tech Credit	0	0	0	No data	No data
Pacific	0	0	0	No data	No data
Vienna	0	0	0	No data	No data
Total	0	0	0	No data	

### Credits

	15/SU	14/SU	+/- DIFF	% DIFF	% PW
Bourbon	0	0	0	No data	No data
Union	0	0	0	No data	No data
Washington	0	0	0	No data	No data
Steelville	0	0	0	No data	No data
Owensville	0	0	0	No data	No data
New Haven	0	0	0	No data	No data
Rolla	0	0	0	No data	No data
Hermann	0	0	0	No data	No data
Sullivan	0	0	0	No data	No data
St Francis	0	0	0	No data	No data
St Clair	0	0	0	No data	No data
Belle	0	0	0	No data	No data
Cuba	0	0	0	No data	No data
Viburnum	0	0	0	No data	No data
Linn	0	0	0	No data	No data
Dual Tech Credit	0	0	0	No data	No data
Pacific	0	0	0	No data	No data
Vienna	0	0	0	No data	No data
Total	0	0	0	No data	

EAST CENTRAL COLLEGE

# Enrollment Report

## 3. Locations

### 3.1. Distance Learning

#### Headcount

	15/SU	14/SU	+/- DIFF	% DIFF	% PW
Web Online	458	488	-30	-6.1%	0.4%
Web Hybrid	144	111	33	29.7%	-0.7%
Web Enhanced	551	399	152	38.1%	-4.3%
ITV	0	0	0	No data	No data

#### Credits

	15/SU	14/SU	+/- DIFF	% DIFF	% PW
Web Online	1849	1997	-148	-7.4%	-0.5%
Web Hybrid	448	321	127	39.6%	0.9%
Web Enhanced	2165	1419	746	52.6%	-5.4%
ITV	0	0	0	No data	No data

ITV: Instructional Television.

### 3.2. Campus Enrollment - With ITV Enrollment Data

#### Headcount

	15/SU	14/SU	+/- DIFF	% DIFF	% PW
Sullivan	30	19	11	57.9%	25.0%
Washington	47	34	13	38.2%	14.6%
Rolla	183	166	17	10.2%	-8.0%
Warrenton	0	0	0	No data	No data
Main Campus	517	570	-53	-9.3%	-3.9%

#### Credits

	15/SU	14/SU	+/- DIFF	% DIFF	% PW
Sullivan	115	64	51	79.7%	23.7%
Washington	210	146	64	43.8%	11.7%
Rolla	864	826	38	4.6%	-6.9%
Warrenton	0	0	0	No data	No data
Main Campus	2123	2381	-258	-10.8%	-4.1%

### 3.3. Student Location

#### Headcount

	Indistrict	Out of District	Out of State	International
15/SU	623	410	7	5
14/SU	693	403	1	5
+/- DIFF	-70	7	6	0
% DIFF	-10.1%	1.7%	600.0%	0.0%
% PW	1.1%	-4.7%	0.0%	0.0%

EAST CENTRAL COLLEGE

# Enrollment Report

## 5. Programs

### 5.1. Programs

#### Headcount

	AA	AAT	AFA	AAS	AS	AC	SP	Visiting Student	Non Degree	Unkn
15/SU	510	39	5	326	26	58	2	75	9	12
14/SU	364	43	5	540	21	33	4	94	13	15
+/- DIFF	146	-4	0	-214	5	25	-2	-19	-4	-3
% DIFF	40.1%	-9.3%	0.0%	-39.6%	23.8%	75.8%	-50.0%	-20.2%	-30.8%	-20.0%
% PW	-3.8%	-9.3%	-37.5%	-0.6%	-3.7%	11.5%	0.0%	8.7%	0.0%	9.1%

Students classed as preadvisement are included in the unknown count.

As a student can be enrolled in more than one program at any time, all active programs are counted for a student.

### 5.2. Majors

#### Headcount

	General	Career / Technical	Other
15/SU	580	386	112
14/SU	433	577	129
+/- DIFF	147	-191	-17
% DIFF	33.9%	-33.1%	-13.2%
% PW	-4.6%	1.0%	9.8%

As a student can be enrolled in more than one program at any time, all active programs are counted for a student.

### 5.3. Top 10 Programs

#### Headcount

	15/SU
AA.GENERALSTUDIES	189
AA.HEALTHSCIENCE	181
AA.BUSINESS	53
HEALTHINFOMGT(AAS)	43
TEACHING.AAT	39
EMT-PARA(AAS)	37
NURSING(AAS)	34
PREENGINEERING	26
MEDASSIST(AAS)	25
BUSMGT(AAS)	22

EAST CENTRAL COLLEGE

# Enrollment Report

## 6. Student Demographics

### 6.1. Student Class

#### Headcount

	Freshman	Sophomore	Other
15/SU	503	415	127
14/SU	497	443	162
+/- DIFF	6	-28	-35
% DIFF	1.2%	-6.3%	-21.6%
% PW	-9.0%	5.1%	15.5%

#### Credits

	Freshman	Sophomore	Other
15/SU	2490	2064	630
14/SU	2506	2240	754
+/- DIFF	-16	-176	-124
% DIFF	-0.6%	-7.9%	-16.4%
% PW	-10.1%	3.7%	15.2%

Freshman: Less than 30 accumulated credit hours

Sophomore: Between 30 and 69 credit hours inclusively

Other: More than 69 accumulated credit hours

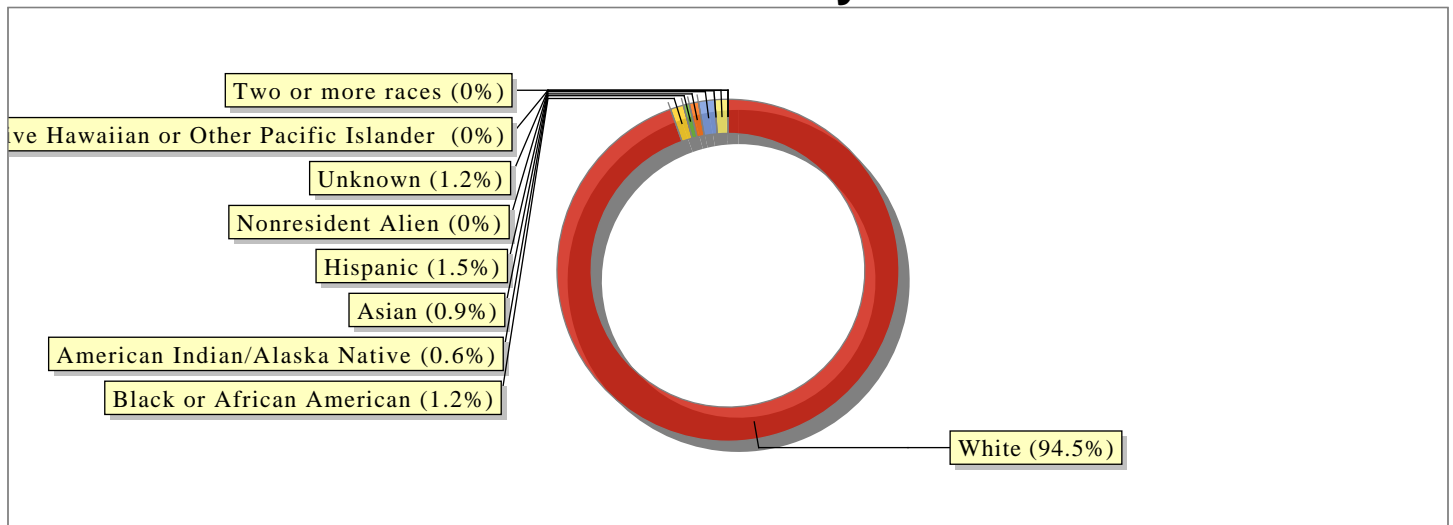
### 6.2. Race & Ethnicity

#### Headcount

	15/SU	14/SU	+/- DIFF	% DIFF	% PW
White	988	1050	-62	-5.9%	-0.4%
Black or African American	13	11	2	18.2%	-18.8%
American Indian/Alaska Native	6	1	5	500.0%	-14.3%
Asian	9	9	0	0.0%	-18.2%
Hispanic	16	17	-1	-5.9%	-5.9%
Two or more races	0	0	0	No data	No data
Native Hawaiian or Other Pacific Islander	0	0	0	No data	No data
Nonresident Alien	0	0	0	No data	No data
Unknown	13	14	-1	-7.1%	-13.3%

Race/Ethnicity are now being reported using new U.S. Department of Education categories

### % Ethnicity





EAST CENTRAL COLLEGE

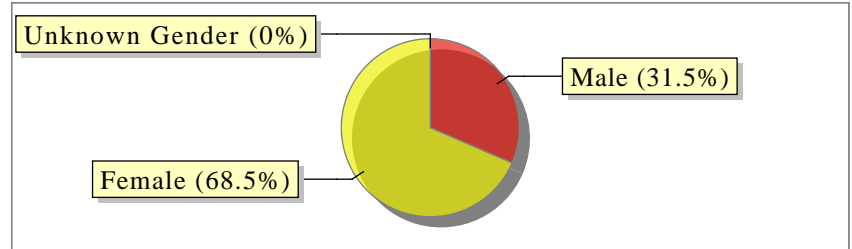
# Enrollment Report

## 6.3. Male and Female

### Headcount

	Male	Female	Unknown Gender
15/SU	329	716	0
14/SU	328	774	0
+/- DIFF	1	-58	0
% DIFF	0.3%	-7.5%	No data
% PW	1.5%	-2.5%	No data

### % Gender



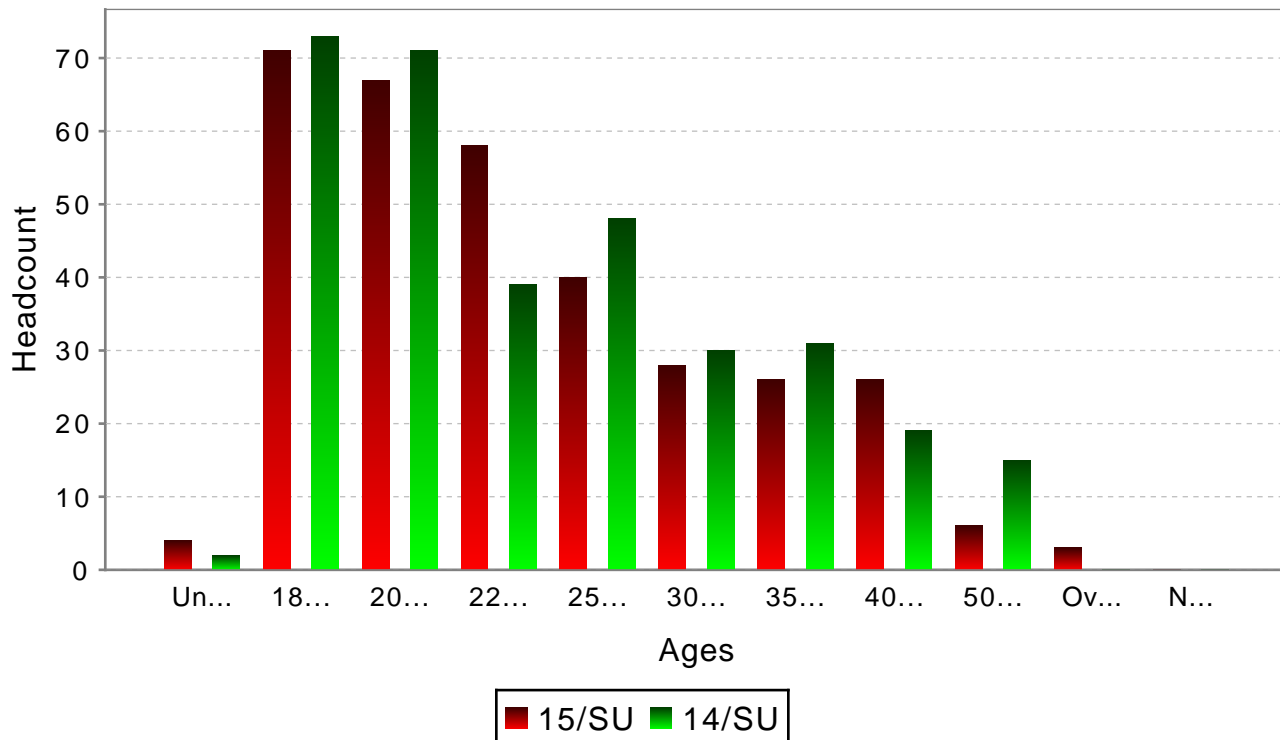
## 6.4. Male Age Ranges

### Headcount

	Under 18	18 - 19	20 - 21	22 - 24	25 - 29	30 - 34	35 - 39	40 - 49	50 - 64	Over 64	Not Known
15/SU	4	71	67	58	40	28	26	26	6	3	0
14/SU	2	73	71	39	48	30	31	19	15	0	0
+/- DIFF	2	-2	-4	19	-8	-2	-5	7	-9	3	0
% DIFF	100.0%	-2.7%	-5.6%	48.7%	-16.7%	-6.7%	-16.1%	36.8%	-60.0%	No data	No data
% PW	33.3%	-10.1%	11.7%	9.4%	11.1%	-15.2%	4.0%	-3.7%	0.0%	50.0%	No data

Mean Male Age: 26

### Male Ages



# EAST CENTRAL COLLEGE Enrollment Report

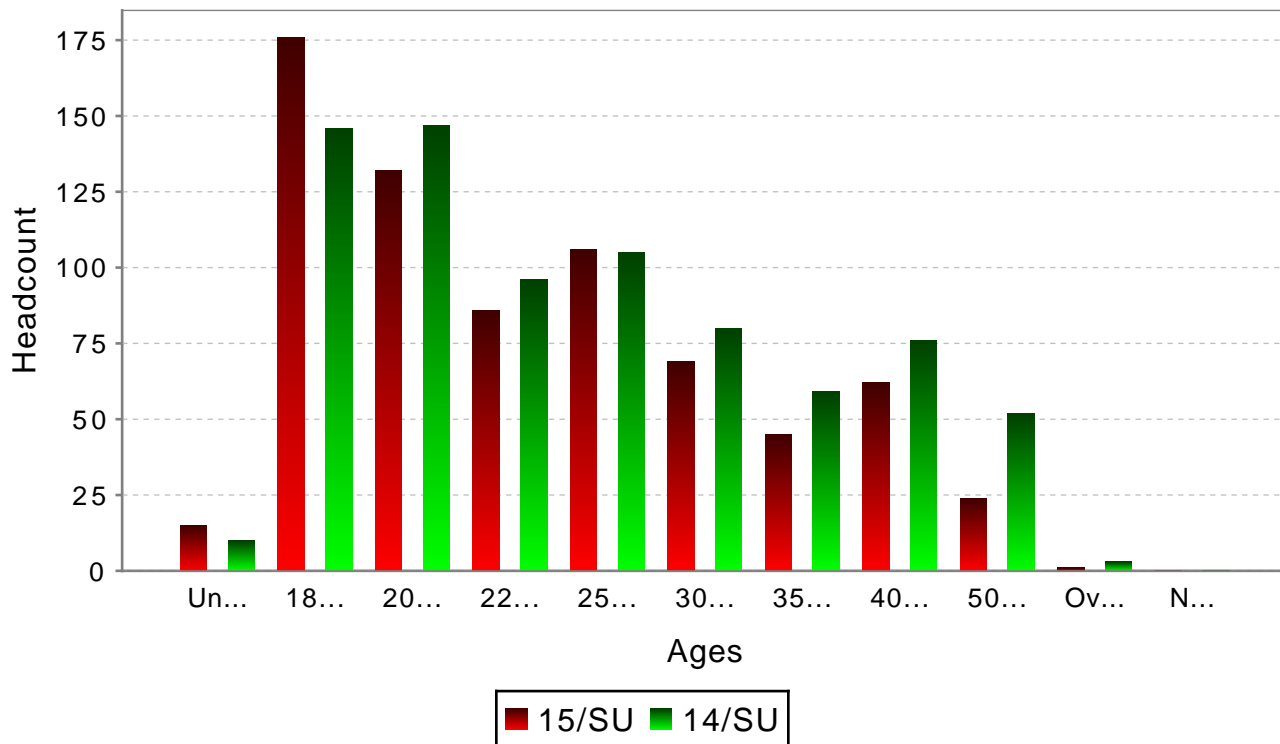
## 6.5. Female Age Ranges

### Female Ages

	Under 18	18 - 19	20 - 21	22 - 24	25 - 29	30 - 34	35 - 39	40 - 49	50 - 64	Over 64	Not Known
15/SU	15	176	132	86	106	69	45	62	24	1	0
14/SU	10	146	147	96	105	80	59	76	52	3	0
+/- DIFF	5	30	-15	-10	1	-11	-14	-14	-28	-2	0
% DIFF	50.0%	20.5%	-10.2%	-10.4%	1.0%	-13.8%	-23.7%	-18.4%	-53.8%	-66.7%	No data
% PW	0.0%	-2.2%	-3.6%	-8.5%	-4.5%	7.8%	2.3%	-1.6%	0.0%	-50.0%	No data

Mean Female Age: 27

### Female Ages



## 6.6. Student Age Statistics

Mean Student Age: 26

## 6.7. Senior Citizens

### Headcount

Senior Citizens	
15/SU	0
14/SU	1
+/- DIFF	-1
% DIFF	-100.0%
% PW	No data