
Section 1

Student Characteristics

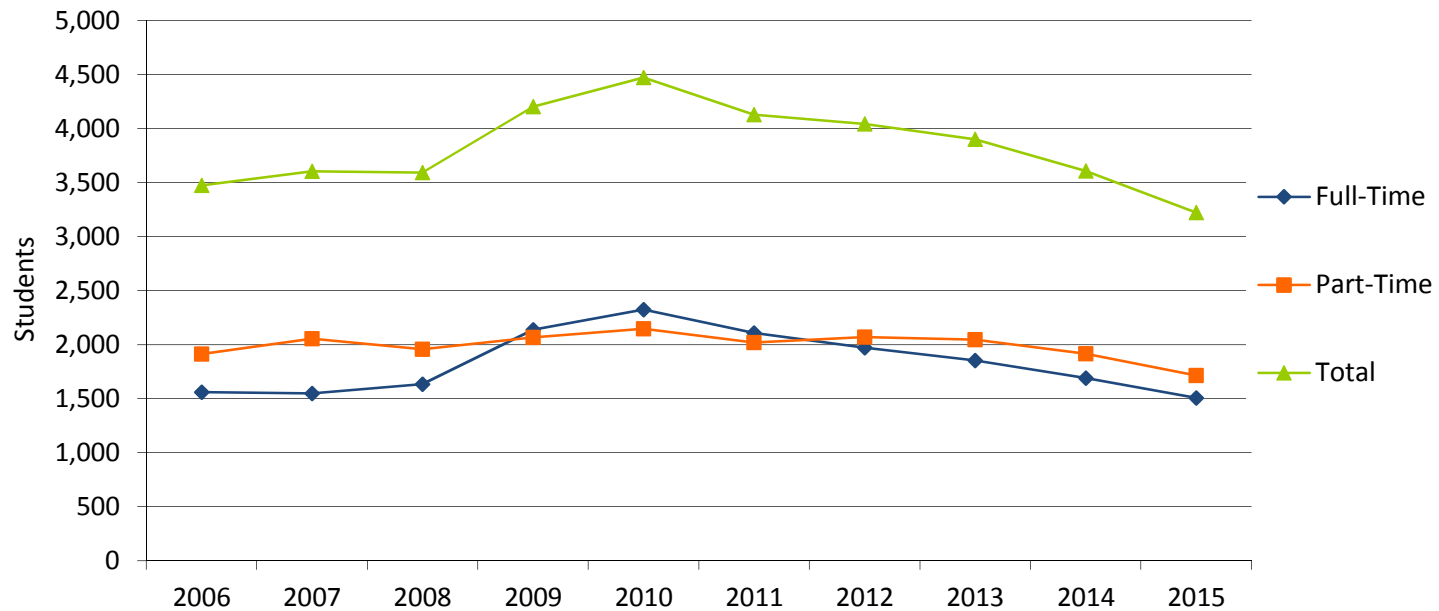
1.1 Fall 2015 Student Characteristics

	Freshmen	Sophomore	Other	Dual Credit/ Dual Enrolled	Dual Tech Credit	Total	% of Total
Total	1,294	1,128	403	305	92	3,222	100.0%
Gender							
Male	568	413	108	95	81	1,265	39.3%
Female	726	715	295	210	11	1,957	60.7%
Enrollment Status							
Full-Time	736	643	142	0	3	1,524	47.3%
Part-Time	558	485	261	305	89	1,698	52.7%
Developmental Courses							
1 course	378	108	8	0	0	494	15.3%
2 courses	118	3	0	0	0	121	3.8%
3+ courses	54	0	0	0	0	54	1.7%
Location							
In-District	734	659	246	235	71	1,945	60.4%
Out-of-District	546	461	156	70	21	1,254	38.9%
Out-of-State	7	4	0	0	0	11	0.3%
International	7	4	1	0	0	12	0.4%
Unknown	0	0	0	0	0	0	0.0%
Age							
< 18	94	5	0	269	77	445	13.8%
18-19	653	287	4	35	13	992	30.8%
20-21	170	301	89	0	0	560	17.4%
22-24	95	165	98	0	0	358	11.1%
25-29	104	129	69	0	0	302	9.4%
30-34	53	90	40	0	0	183	5.7%
35-39	40	63	34	0	0	137	4.3%
40-49	64	60	46	0	0	170	5.3%
50-64	19	26	22	0	0	67	2.1%
65 and older	2	2	1	0	0	5	0.2%
Unknown	0	0	0	1	2	3	0.1%
Race/Ethnicity							
American Indian/Alaska Native	15	7	1	3	0	26	0.8%
Asian	10	4	3	4	0	21	0.7%
Black or African American	15	9	3	5	0	32	1.0%
Hispanic	27	25	3	3	0	58	1.8%
Native Hawaiian/Pacific Islander	1	0	0	0	1	2	0.1%
Nonresident Alien	2	0	0	0	0	2	0.1%
Race/Ethnicity Unknown	15	11	2	2	2	32	1.0%
Two or more races	3	1	0	1	2	7	0.2%
White	1,206	1,071	391	287	87	3,042	94.4%

Source: Colleague Fall Census

1.2 Fall Credit Enrollment By Enrollment Status

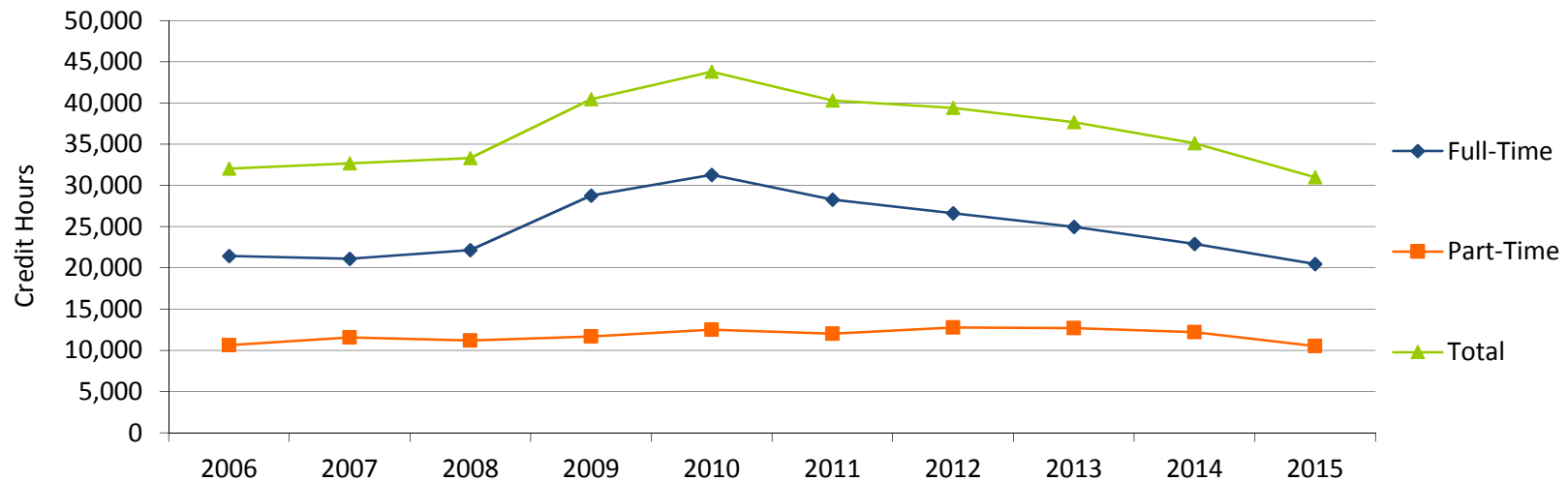
	2006	2007	2008	2009	2010	2011	2012	2013	2014	2015	% Change	
											2006-2015	2014-2015
Total	3,474	3,604	3,591	4,203	4,471	4,127	4,043	3,899	3,606	3,222	-7.3%	-10.6%
Headcount												
Full-Time	1,560	1,549	1,635	2,137	2,325	2,108	1,972	1,852	1,690	1,508	-3.3%	-10.8%
Part-Time	1,914	2,055	1,956	2,066	2,146	2,019	2,071	2,047	1,916	1,714	-10.4%	-10.5%
Percentages												
Full-Time	44.9%	43.0%	45.5%	50.8%	52.0%	51.1%	48.8%	47.5%	46.9%	46.8%		
Part-Time	55.1%	57.0%	54.5%	49.2%	48.0%	48.9%	51.2%	52.5%	53.1%	53.2%		



Source: IPEDS

1.3 Fall Credit Hours

	2006	2007	2008	2009	2010	2011	2012	2013	2014	2015	% Change	
											2006-2015	2014-2015
Total	32,046	32,677	33,328	40,444	43,787	40,291	39,383	37,670	35,125	30,982	-3.3%	-11.8%
Credit Hours												
Full-Time	21,437	21,109	22,150	28,756	31,288	28,268	26,610	24,984	22,912	20,476	-4.5%	-10.6%
Part-Time	10,609	11,568	11,178	11,687	12,498	12,022	12,772	12,686	12,212	10,505	-1.0%	-14.0%
Percentages												
Full-Time	66.9%	64.6%	66.5%	71.1%	71.5%	70.2%	67.6%	66.3%	65.2%	66.1%		
Part-Time	33.1%	35.4%	33.5%	28.9%	28.5%	29.8%	32.4%	33.7%	34.8%	33.9%		

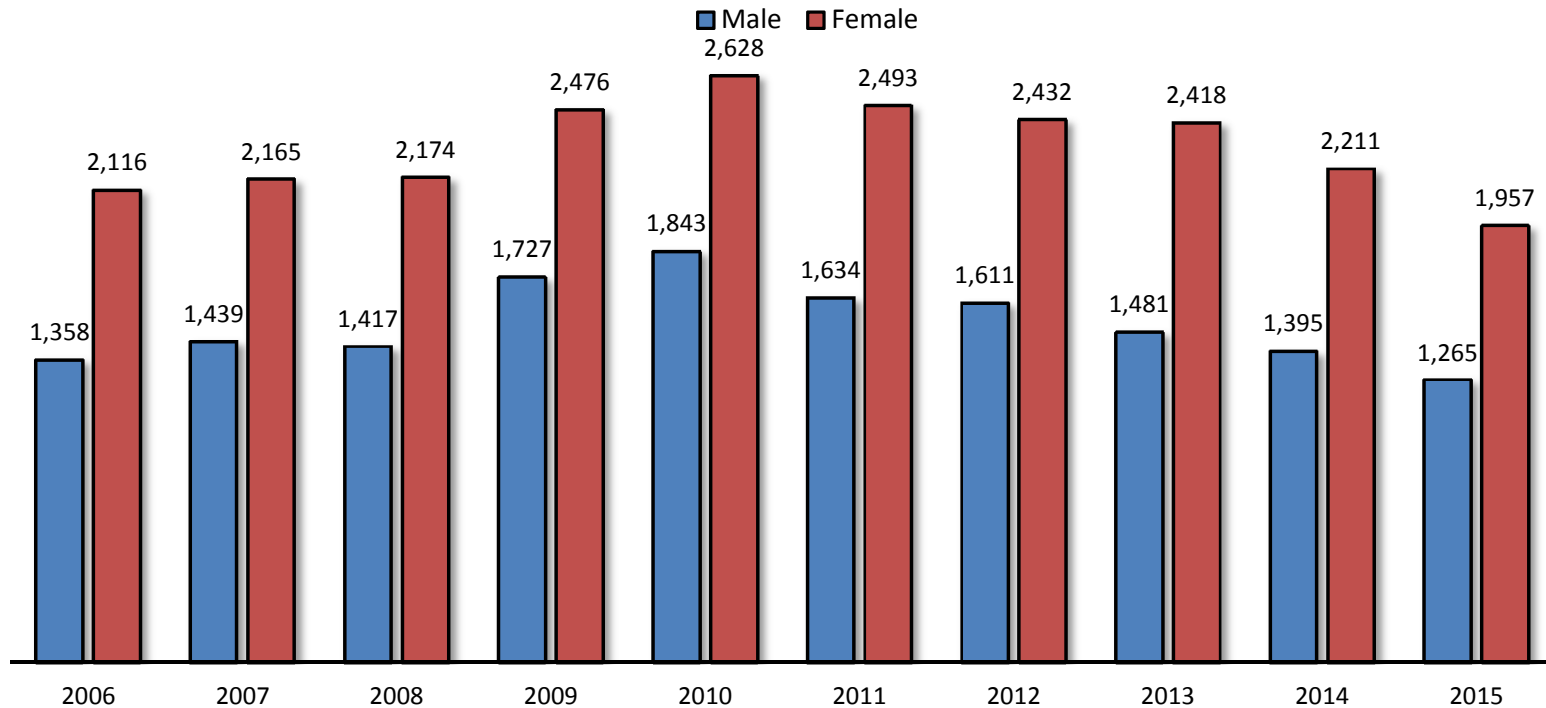


1.4 Fall Full-Time Equivalent (FTE) Enrollment

	2006	2007	2008	2009	2010	2011	2012	2013	2014	2015	% Change	
											2006-2015	2014-2015
FTE	2,136	2,178	2,222	2,696	2,919	2,686	2,626	2,511	2,342	2,065	-3.3%	-11.8%

1.5 Fall Credit Enrollment By Gender

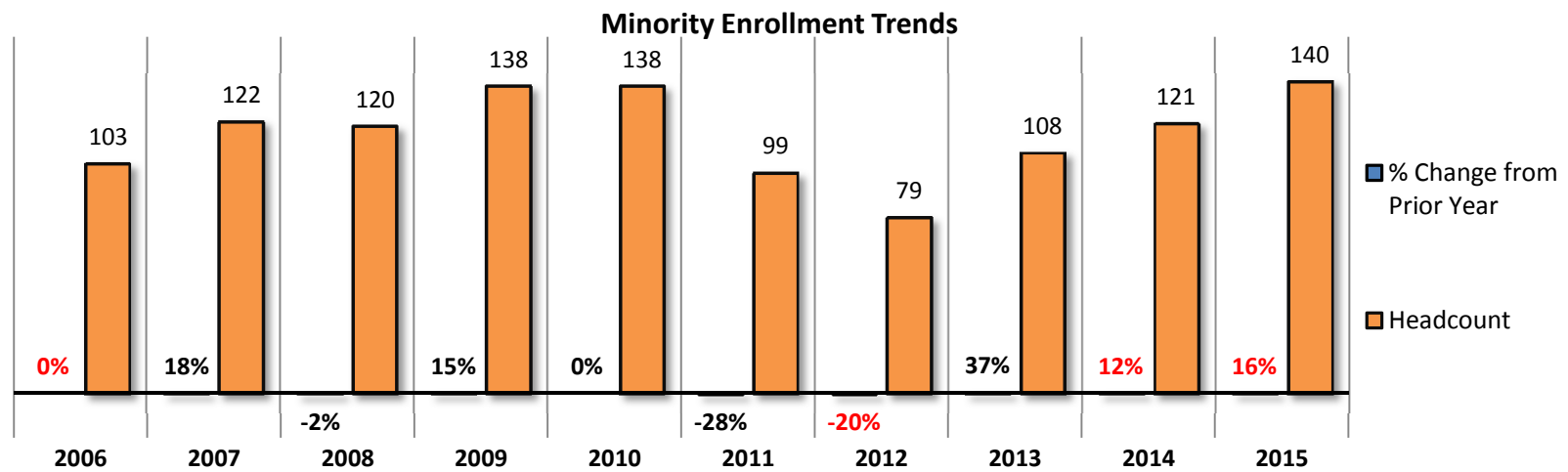
	2006	2007	2008	2009	2010	2011	2012	2013	2014	2015	% Change	
											2006-2015	2014-2015
Total	3,474	3,604	3,591	4,203	4,471	4,127	4,043	3,899	3,606	3,222	-7.3%	-10.6%
Headcount												
Male	1,358	1,439	1,417	1,727	1,843	1,634	1,611	1,481	1,395	1,265	-6.8%	-9.3%
Female	2,116	2,165	2,174	2,476	2,628	2,493	2,432	2,418	2,211	1,957	-7.5%	-11.5%
Percentages												
Male	39.1%	39.9%	39.5%	41.1%	41.2%	39.6%	39.8%	38.0%	38.7%	39.3%		
Female	60.9%	60.1%	60.5%	58.9%	58.8%	60.4%	60.2%	62.0%	61.3%	60.7%		



Source: IPEDS

1.6 Fall Credit Enrollment By Ethnicity

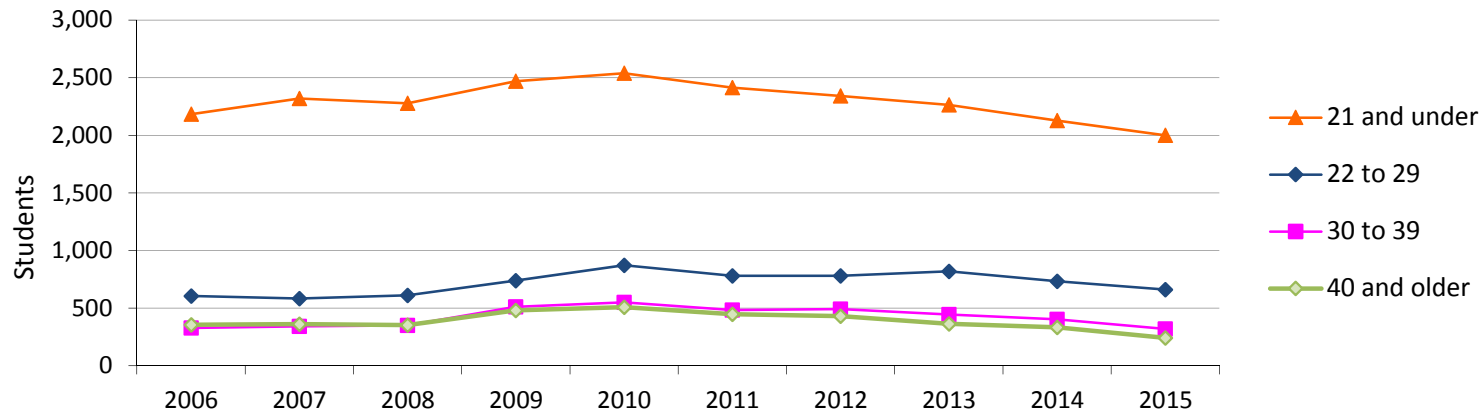
											% Change	
	2006	2007	2008	2009	2010	2011	2012	2013	2014	2015	2006-2015	2014-2015
Total	3,474	3,604	3,591	4,203	4,471	4,127	4,043	3,899	3,606	3,222	-7.3%	-10.6%
Race/Ethnicity*												
American Indian/Alaska Native	13	15	11	14	19	16	12	10	17	26	100.0%	52.9%
Asian	24	21	20	23	12	11	11	23	19	21	-12.5%	10.5%
Black or African American	26	36	46	46	47	35	23	22	36	33	26.9%	-8.3%
Hispanic	40	50	43	54	57	34	33	47	46	58	45.0%	26.1%
Native Hawaiian/Pacific Islander	na	na	na	1	3	3	0	6	3	2	na	-33.3%
Nonresident Alien	5	0	3	3	1	1	0	0	0	2	-60.0%	200.0%
Race/Ethnicity Unknown	283	225	160	124	93	78	85	49	61	35	-87.6%	-42.6%
Two or more races	na	na	na	4	6	6	0	2	1	3	na	200.0%
White	3,083	3,257	3,308	3,934	4,233	3,943	3,879	3,740	3,423	3,042	-1.3%	-11.1%
Percentages												
American Indian/Alaska Native	0.4%	0.4%	0.3%	0.3%	0.4%	0.4%	0.3%	0.3%	0.5%	0.8%		
Asian	0.7%	0.6%	0.6%	0.5%	0.3%	0.3%	0.3%	0.6%	0.5%	0.7%		
Black or African American	0.7%	1.0%	1.3%	1.1%	1.1%	0.8%	0.6%	0.6%	1.0%	1.0%		
Hispanic	1.2%	1.4%	1.2%	1.3%	1.3%	0.8%	0.8%	1.2%	1.3%	1.8%		
Native Hawaiian/Pacific Islander	na	na	na	0.0%	0.1%	0.1%	0.0%	0.2%	0.1%	0.1%		
Nonresident Alien	0.1%	0.0%	0.1%	0.1%	0.0%	0.0%	0.0%	0.0%	0.0%	0.1%		
Race/Ethnicity Unknown	8.1%	6.2%	4.5%	3.0%	2.1%	1.9%	2.1%	1.3%	1.7%	1.1%		
Two or more races	na	na	na	0.1%	0.1%	0.1%	0.0%	0.1%	0.0%	0.1%		
White	88.7%	90.4%	92.1%	93.6%	94.7%	95.5%	95.9%	95.9%	94.9%	94.4%		



Source: IPEDS

1.7 Fall Credit Enrollment by Age

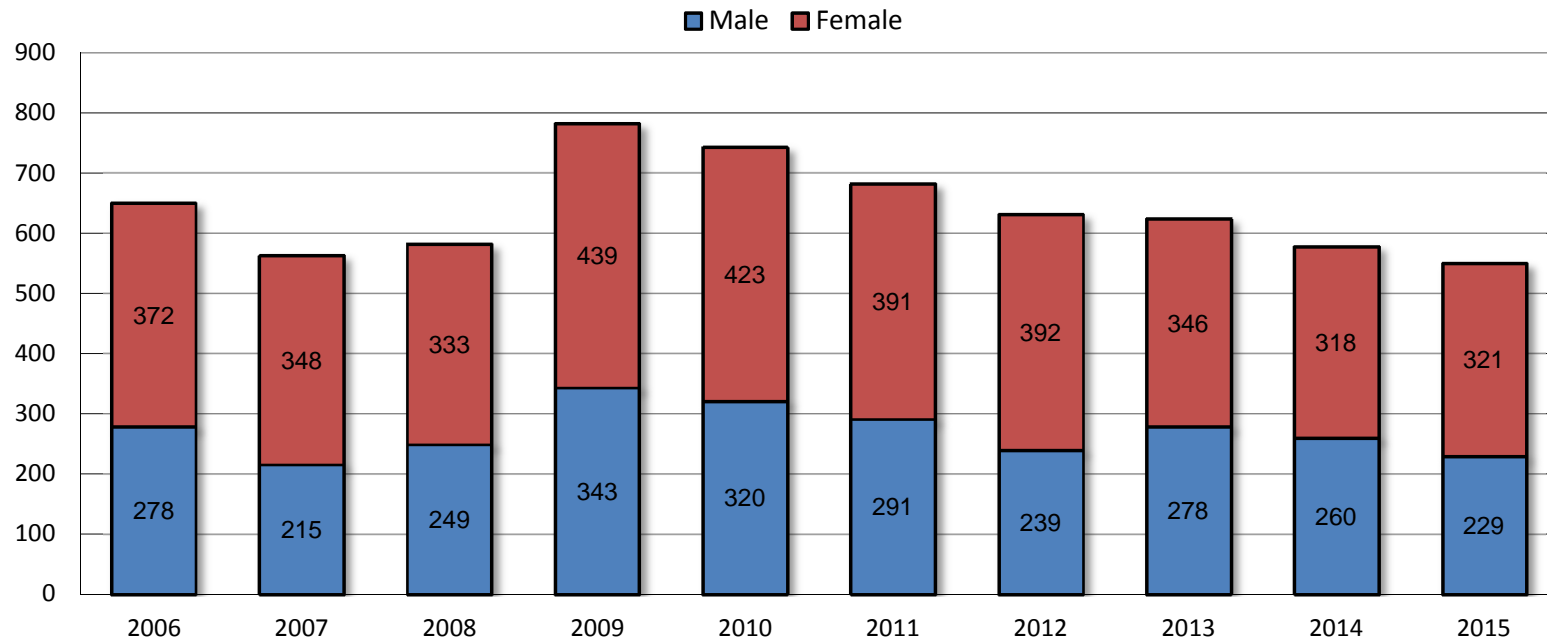
	2006	2007	2008	2009	2010	2011	2012	2013	2014	2015	% Change	
											2006-2015	2014-2015
Total	3,474	3,604	3,591	4,203	4,471	4,127	4,043	3,899	3,606	3,222	-7.3%	-10.6%
Age Category												
<18	612	713	628	630	581	527	524	506	456	448	-26.8%	-1.8%
18-19	1,078	1,098	1,100	1,228	1,297	1,188	1,124	1,117	1,074	992	-8.0%	-7.6%
20-21	493	507	549	612	661	698	694	641	597	560	13.6%	-6.2%
22-24	306	278	300	368	435	387	399	394	382	358	17.0%	-6.3%
25-29	300	305	312	371	438	395	381	426	351	302	0.7%	-14.0%
30-34	186	188	184	285	309	277	306	270	236	183	-1.6%	-22.5%
35-39	142	154	166	227	240	207	185	176	168	137	-3.5%	-18.5%
40-49	236	240	230	315	322	289	273	237	200	170	-28.0%	-15.0%
50-64	83	79	82	126	142	117	144	119	127	67	-19.3%	-47.2%
65 and older	38	42	40	41	45	41	13	9	6	5	-86.8%	-16.7%
Unknown	0	0	0	0	1	1	0	4	9	0	na	-100.0%
Percentages												
<18	18%	20%	17%	15%	13%	13%	13%	13%	13%	14%		
18-19	31%	30%	31%	29%	29%	29%	28%	29%	30%	31%		
20-21	14%	14%	15%	15%	15%	17%	17%	16%	17%	17%		
22-24	9%	8%	8%	9%	10%	9%	10%	10%	11%	11%		
25-29	9%	8%	9%	9%	10%	10%	9%	11%	10%	9%		
30-34	5%	5%	5%	7%	7%	7%	8%	7%	7%	6%		
35-39	4%	4%	5%	5%	5%	5%	5%	5%	5%	4%		
40-49	7%	7%	6%	7%	7%	7%	7%	6%	6%	5%		
50-64	2%	2%	2%	3%	3%	3%	4%	3%	4%	2%		
65 and older	1%	1%	1%	1%	1%	1%	0%	0%	0%	0%		
Unknown	0%	0%	0%	0%	0%	0%	0%	0%	0%	0%		



Source: IPEDS

1.8 Fall Credit Enrollment By Full-Time, First-Time, Degree/Certificate-Seeking Students

	2006	2007	2008	2009	2010	2011	2012	2013	2014	2015	% Change	
											2006-2015	2014-2015
Total*	650	563	582	782	743	682	631	624	578	550	-15.4%	-4.8%
Headcount												
Male	278	215	249	343	320	291	239	278	260	229	-17.6%	-11.9%
Female	372	348	333	439	423	391	392	346	318	321	-13.7%	0.9%
Percentages												
Male	42.8%	38.2%	42.8%	43.9%	43.1%	42.7%	37.9%	44.6%	45.0%	41.6%		
Female	57.2%	61.8%	57.2%	56.1%	56.9%	57.3%	62.1%	55.4%	55.0%	58.4%		

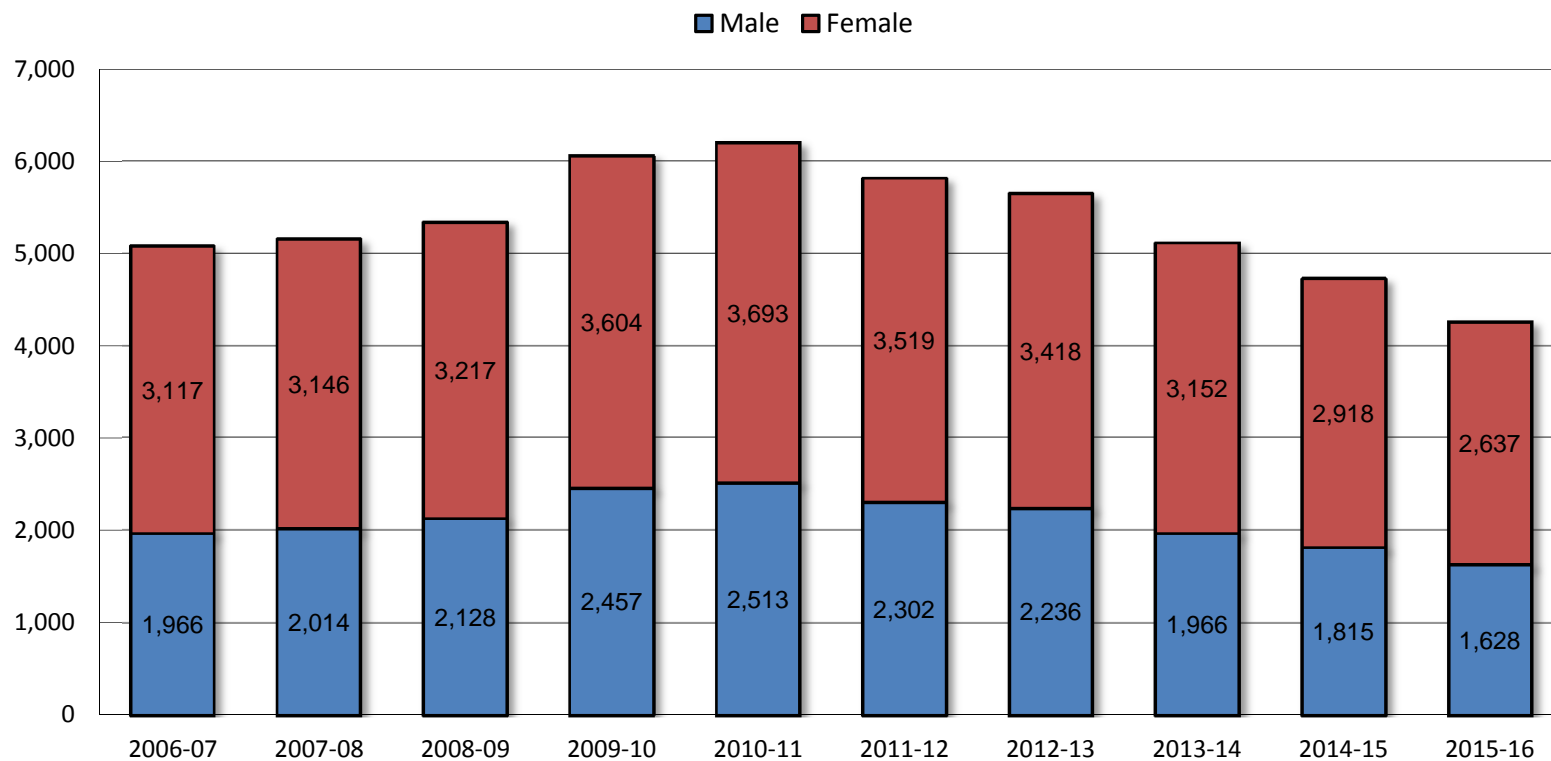


Source: IPEDS

* Represents the IPEDS Graduation Rate Survey cohort

1.9 Twelve-Month* Unduplicated Headcount

											% Change	
	2006-07	2007-08	2008-09	2009-10	2010-11	2011-12	2012-13	2013-14	2014-15	2015-16	2006-07 to 2015-16	2014-15 to 2015-16
Total	5,083	5,160	5,345	6,061	6,206	5,821	5,654	5,118	4,733	4,265	-16.1%	-9.9%
Headcount												
Male	1,966	2,014	2,128	2,457	2,513	2,302	2,236	1,966	1,815	1,628	-17.2%	-10.3%
Female	3,117	3,146	3,217	3,604	3,693	3,519	3,418	3,152	2,918	2,637	-15.4%	-9.6%

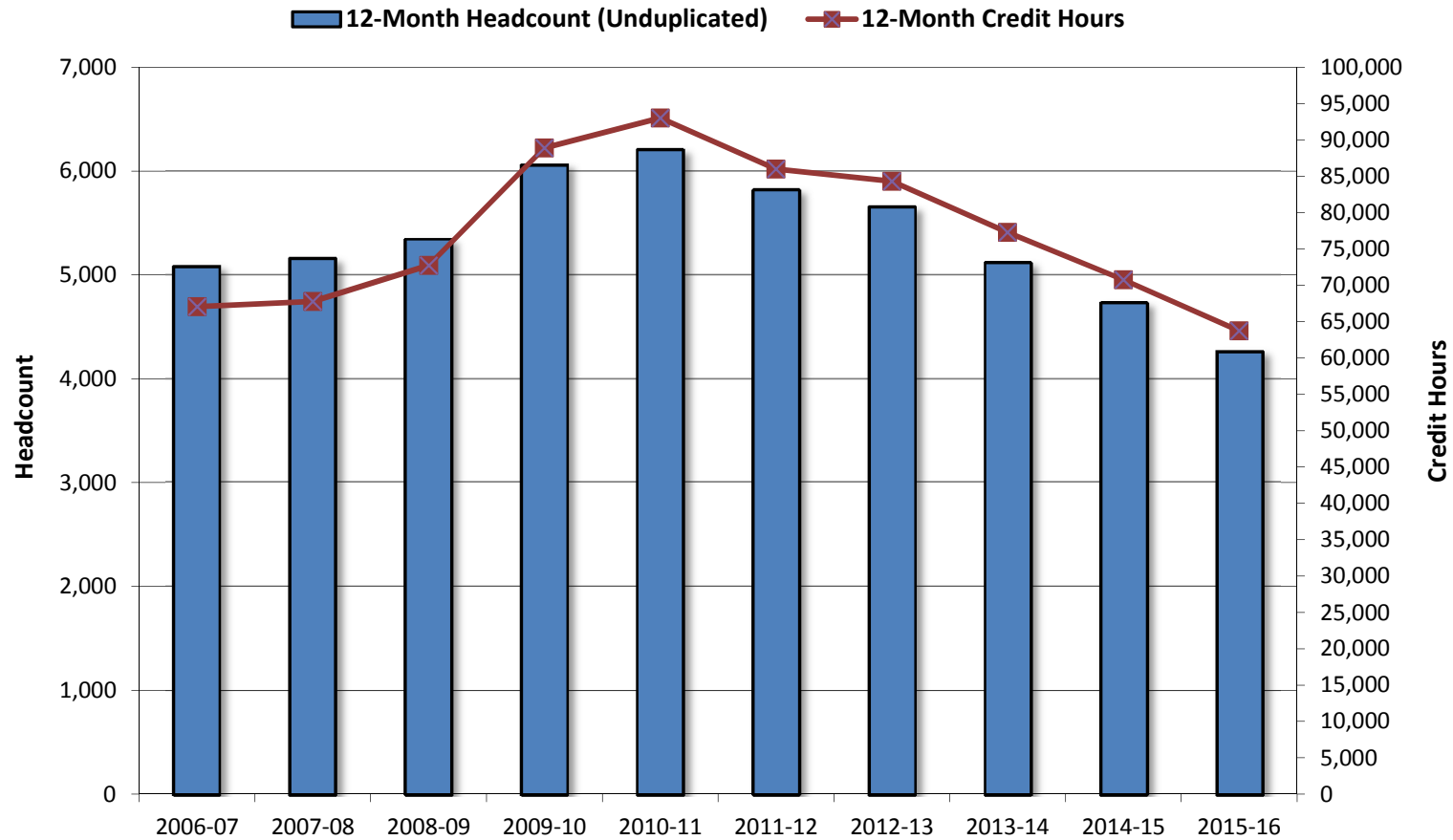


Source: IPEDS

* July 1 - June 30

1.10 Twelve-Month* Credit Hours & Full-Time Equivalent (FTE) Enrollment

	2006-07	2007-08	2008-09	2009-10	2010-11	2011-12	2012-13	2013-14	2014-15	2015-16	% Change	
											2006-07 to 2015-16	2014-15 to 2015-16
Credit Hours	67,072	67,794	72,729	88,883	93,012	85,988	84,312	77,298	70,756	63,721	-5.0%	-9.9%
FTE	2,236	2,260	2,424	2,963	3,100	2,866	2,810	2,577	2,359	2,124	-5.0%	-9.9%

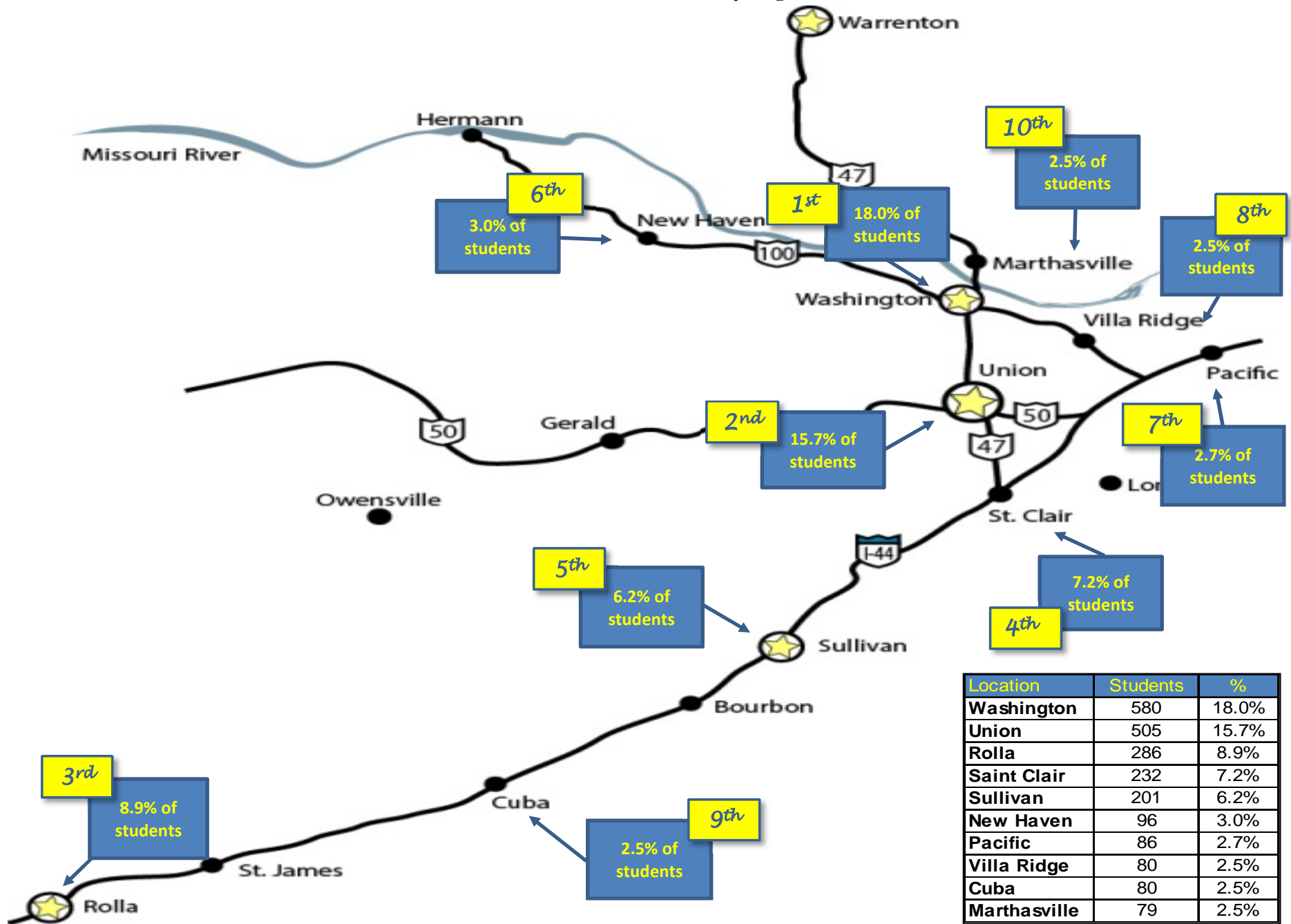


Source: IPEDS

* July 1 - June 30

Note: FTE for twelve-month instructional activity = twelve-month credit hours/30

1.11 Fall 2015 Enrollment by Zip Code



Source: Colleague

Note: Percentages are based on total fall enrollment

1.12 Fall Enrollment by Day & Evening Students

	2006	2007	2008	2009	2010	2011	2012	2013	2014	2015	% Change	
											2006-2015	2014-2015
Total	3,474	3,604	3,591	4,203	4,471	4,127	4,043	3,899	3,606	3,222	-7.3%	-10.6%
Course Time(s)												
Day Only	1,872	2,053	2,108	2,461	2,679	2,347	2,292	2,376	2,340	1,931	3.2%	-17.5%
Evening Only	507	491	503	461	437	430	451	420	325	341	-32.7%	4.9%
Day & Evening	1,095	1,060	980	1,281	1,355	1,350	1,300	1,103	941	950	-13.2%	1.0%

