
Section 10

Continuing Education

10.1 Fall Continuing Education Student Characteristics

	Fall 2006	Fall 2007	Fall 2008	Fall 2009	Fall 2010	Fall 2011	Fall 2012	Fall 2013	Fall 2014	AY 2016*
Total	282	352	271	494	550	488	404	439	439	1,124
Gender										
Male	104	109	95	120	169	121	101	133	139	384
Female	178	243	176	374	381	367	303	306	300	732
Unknown	0	0	0	0	0	0	0	0	0	8
Enrollment Status (based on credit-bearing courses)										
Full-Time	10	6	2	25	22	17	7	11	17	19
Part-Time	11	5	7	11	20	11	14	13	4	22
Location										
In-District	204	263	215	400	449	383	327	334	329	816
Out-of-District	76	83	51	90	100	104	75	102	109	305
Out-of-State	0	0	0	0	0	0	0	2	1	3
International	0	0	0	0	0	0	0	0	0	0
Other	2	6	5	4	1	1	2	1	0	0
Age										
< 18	64	75	90	82	70	65	38	28	60	248
18-19	2	8	2	14	14	11	1	8	8	52
20-21	9	5	3	13	7	14	13	7	14	41
22-24	8	4	7	15	9	10	7	10	18	56
25-29	13	12	9	27	30	22	26	32	20	72
30-34	8	16	6	16	31	29	16	19	25	65
35-39	11	15	12	28	23	16	23	16	20	64
40-49	53	63	43	86	108	79	51	57	66	120
50-64	71	100	57	123	165	148	136	163	144	264
65 and older	34	47	35	74	71	73	89	93	61	134
Unknown	9	7	7	16	22	21	4	6	3	8
Race/Ethnicity										
American Indian/Alaska Native	2	0	0	1	1	0	0	0	0	1
Asian	0	1	0	0	0	0	0	0	1	3
Black or African American	1	0	1	1	2	3	1	1	4	2
Hispanic	0	1	1	2	1	1	1	1	2	12
Native Hawaiian/Pacific Islander	0	0	0	0	0	0	0	0	0	0
Nonresident Alien	0	0	0	0	0	0	0	0	0	0
Race/Ethnicity Unknown	117	175	159	253	277	259	119	186	222	532
Two or more races	0	0	0	0	0	0	0	0	0	0
White	162	175	110	237	269	225	283	251	210	574

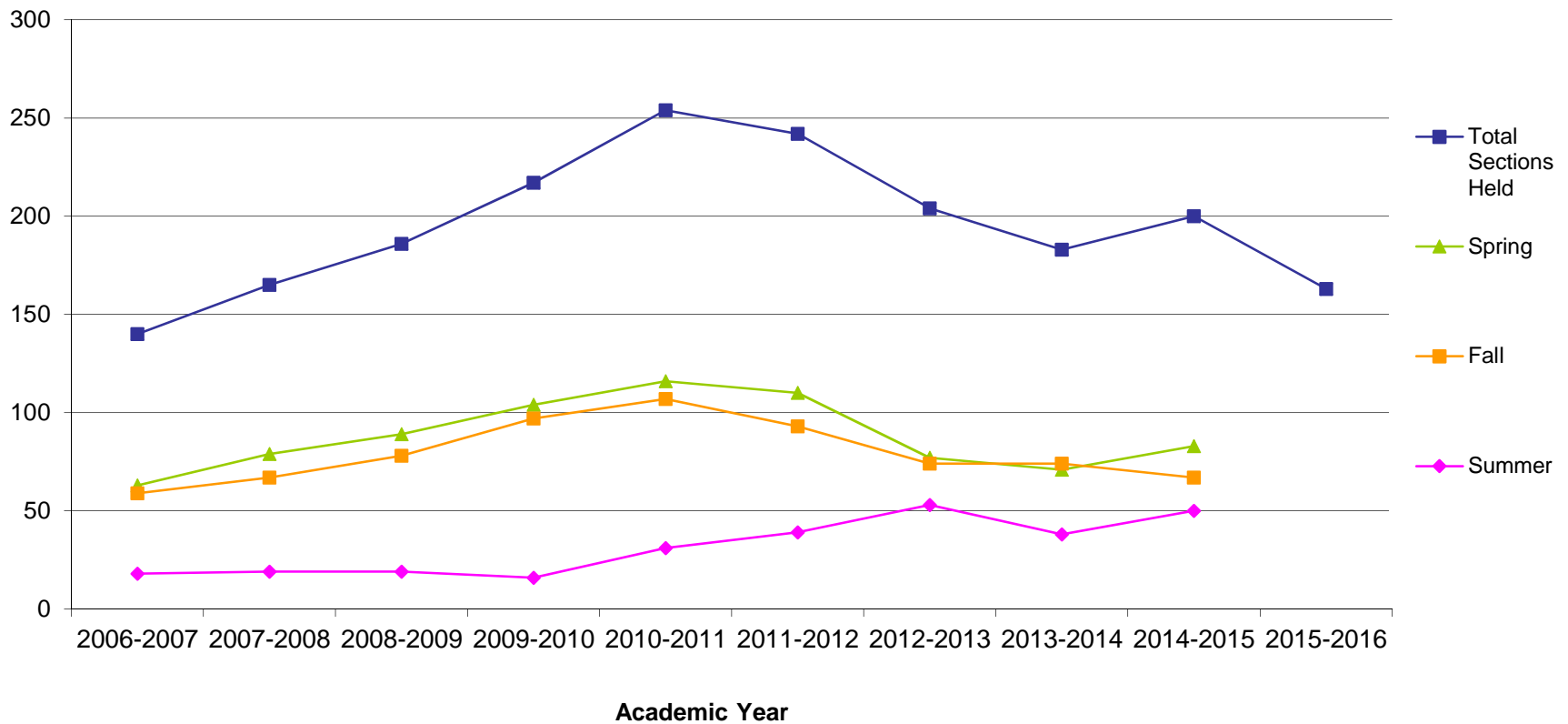
Source: Colleague

Note: Data are based on end of fall term continuing education students.

*Starting in 2015, CE courses were no longer broken down by traditional semesters. AY 2016 includes a full academic year.

10.2 Continuing Education Sections by Term

											% Change	
	2006-2007	2007-2008	2008-2009	2009-2010	2010-2011	2011-2012	2012-2013	2013-2014	2014-2015	2015-2016	2006-2007 to 2015-2016	2014-2015 to 2015-2016
Total Sections Held	140	165	186	217	254	242	204	183	200	163	16.4%	-18.5%
Summer	18	19	19	16	31	39	53	38	50	na*	na	na
Fall	59	67	78	97	107	93	74	74	67	na*	na	na
Spring	63	79	89	104	116	110	77	71	83	na*	na	na

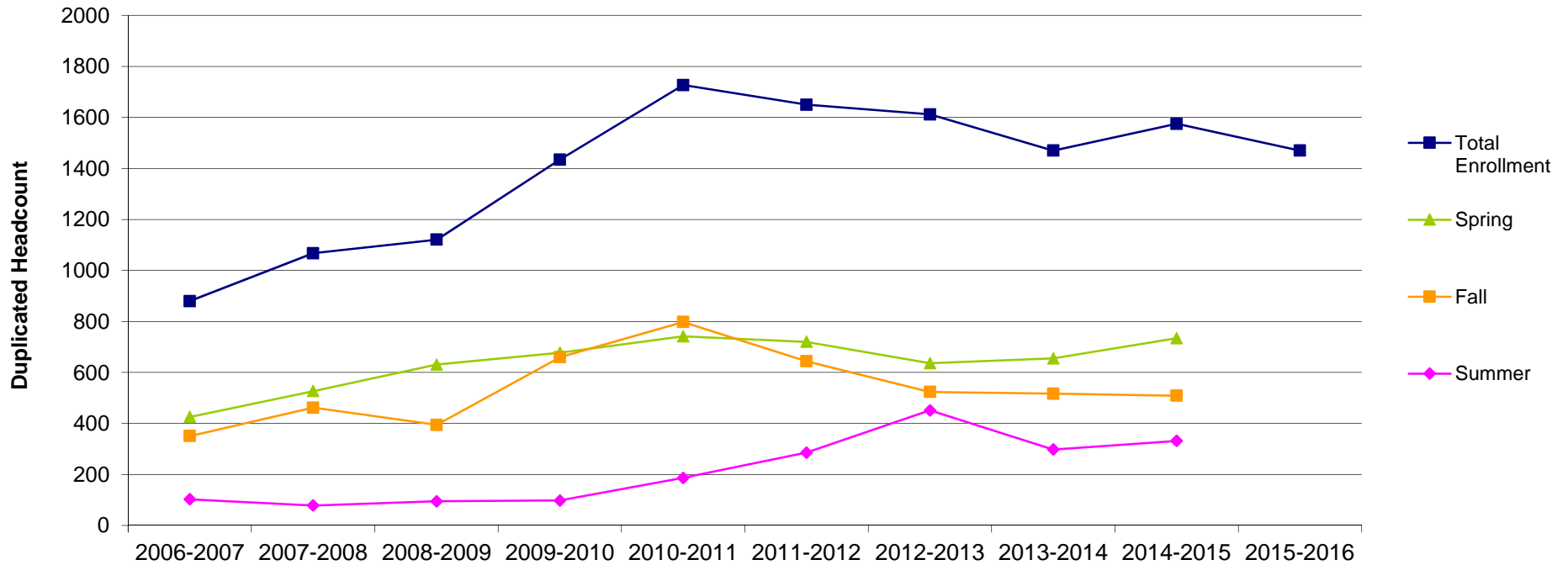


Source: Colleague (end of term data)

*Starting in 2015, CE courses were no longer broken down by traditional semesters.

10.3 Continuing Education Enrollment

											% Change	
	2006-2007	2007-2008	2008-2009	2009-2010	2010-2011	2011-2012	2012-2013	2013-2014	2014-2015	2015-2016	2006-2007 to 2015-2016	2014-2015 to 2015-2016
Total Enrollment (duplicated)	880	1068	1121	1435	1727	1650	1612	1470	1575	1470	67.0%	-6.7%
Summer	103	79	95	98	187	286	452	298	332	na*	na	na
Fall	351	462	395	660	798	644	524	517	509	na*	na	na
Spring	426	527	631	677	742	720	636	655	734	na*	na	na
Total Students (unduplicated)	660	723	741	1022	1103	1172	1118	1106	1224	1124	70.3%	-8.2%
Summer	98	76	91	87	157	250	366	247	264	na*	na	na
Fall	282	352	271	494	550	488	404	439	439	na*	na	na
Spring	364	417	478	536	517	526	486	533	636	na*	na	na



Source: Colleague (end of term data)

*Starting in 2015, CE courses were no longer broken down by traditional semesters.