

GUEST ARTIST SERIES



Christine Brewer: Music From The British Isles

August 26 • 7:30 p.m.

Grammy Award-winning soprano Christine Brewer, named one of the top 20 sopranos of all time (BBC Music), joins pianist Jennifer

Judd for an evening of favorite songs of the British Isles.



Lovestruck Balladeers

October 11 • 7:30 p.m.

The Lovestruck Balladeers enchant audiences with their masterful performances and inspired repertoire of ragtime, jazz and beautiful songs from around the world. They might

push into a renegade rearrangement of a swing standard or get down with a country rag. Their repertoire is a rare repository of American and international music seldom heard.



Arianna String Quartet

October 21 • 7:30 p.m.

Arianna String Quartet continues to bring their remarkable artistry and exhilarating performance to the ECC stage for the 21st season. Pianist Jennifer Judd will join

the Quartet performing Piano Quintet in F minor by Johannes Brahms.



Kingsbury Ensemble: Celebrating New Worlds in Baroque Music

November 11 • 7:30 p.m.

The 17th and 18th centuries in Europe were intense periods of travel and exploration. The

discovery of new lands, new people, and new cultures created a fascination for the "Exotic" feel all over the continent, as reflected in music, dance, visual arts, theater, and literature of the times. The repertoire includes works by Rameau, Lully, Mozart, Haydn, and more!



David Halen, Björn Ranheim and Jennifer Judd

January 27 • 7:30 p.m.

St. Louis Symphony Concertmaster David Halen and acclaimed SLSO Cellist Björn Ranheim with pianist Jennifer

Judd will perform a thrilling program of music by Franck and Brahms. Each musician boasts a robust solo career, and their passion for chamber music has amazed audiences all over the world.



Early Music Missouri: San Marco's Virtuosi

February 3 • 7:30 p.m.

Early Music Missouri presents a program of sacred and devotional music from Venice's San Marco Cathedral. The concert features music

composed by Claudio Monteverdi for his virtuoso choir at Venice's famed church and includes works from one of his last publications, *Selva morale e spirituale*.



An Evening Of Classical Jazz: Rhapsody In Blue

March 24 • 7:30 p.m.

ECC Concert Band and guest performers will present an exciting evening of music including Artie Shaw's Clarinet

Concerto and the beloved Rhapsody in Blue, featuring soloists Kelly Austermann and Jennifer Judd.



Alan Ferber Nonet Jazz Band

April 28 • 7:30 p.m.

Alan Ferber — one of the jazz scene's most in-demand session players — has four albums with this ensemble, the latest being the GRAMMY-

nominated 'Roots & Transitions' on Sunnyside Records. Featured on this performance will be a collection of some of St Louis's top-call jazz musicians. Some Chicago blues, Memphis soul, Southern rock, and St. Louis R&B.

GET TICKETS

For tickets to Guest Artist performances call 636-584-6693 or visit: www.eastcentral.edu/tickets. Unless otherwise noted, performances are held in the John Edson Anglin Performing Arts Center located in Hansen Hall on the Union campus. Matinee events, student ensemble performances, recitals, and festivals are open to the public at no charge.

MATINEE SERIES

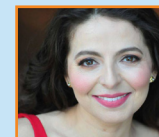


Chamber Music Concert

September 9 • 4 p.m. • HH 105

Family members Paul Thompson (piano), Dr. Sara Edgerton (cello), Dr. James Thompson (flute), and

Matthew Thompson (flute) will present an engaging and diverse chamber music program for flutes, cello, and piano.



Renaissance Song & Dance From Spanish Courts

September 23 • 4 p.m. • HH 105

Early Music Missouri brings music of the 16th-century Spanish Court to life with a program of songs and dances. Soprano Victoria Botera, a native of Colombia, will sing Renaissance *villancicos*, laments and lullabies, supported by Stephanie Hunt on *viola da gamba* and Jeffrey Noonan on *vihuela*.



Angela Kim Presents Sonatas & Interludes by John Cage

October 28 • 4 p.m. • HH 105

An avid performer of new music, Dr. Angela Kim will actively demonstrate and perform a program of prepared piano. Dr. Kim is an Assistant Piano professor at Southern Illinois University in Edwardsville.



Faculty Recital

February 17 • 4 p.m. • HH 105

The ECC music department is home to many talented and dedicated instructors who are also performing artists.

Join us for an evening of artistry that belongs to our community more than any other, as the mentors and professors of our music students showcase the craft they teach.



Synergy: Program For Two Pianos & Two Vibraphones

April 21 • 4 p.m. • HH 105

Pianists Maryse Carlin, Johanna Ballou, and percussionists Henry Claude and Sebastian Buht will present a program of 21st Century Works by John Adams, John Psathas, and Steve Reich.

ENSEMBLE SERIES

ECC Band Concert

October 18

College Choir Concert: Music Of The British Isles

October 20

College Choir Christmas Celebration

December 2

Christmas Jazz Bistro Concert & Dinner

December 6 • ECC Training Center

College Choir Concert: Jazz & Musical Theater Cabaret

March 21

College Choir Concert: Spring Awakenings

May 4

Pops Concert At The Washington Fairgrounds

May 5

FESTIVALS

Treble Choir Festival

November 19

Sonatina Festival

January 28 - 29

Midwest Sheet Music Choral Festival

March 21

Palen Band Day

March 23 - 24

MSHSAA Large Ensemble Festival

March 30 - 31

Jazz Festival

April 27 - 28



**Dr. Jennifer Judd • Professor of Music
Music Department Program Coordinator**

jennifer.judd@eastcentral.edu

636.584.6696



**Aaron Bounds • Director of Bands
Assistant Professor of Music**

aaron.bounds@eastcentral.edu

636.584.6697



**Dr. Timothy Sexton • Director of Choirs
Instructor of Music**

timothy.sexton@eastcentral.edu

636.584.6698

DEGREES OFFERED

Associate of Arts in Music

Associate of Fine Arts in Music

*East Central College is an accredited member by the
National Association of Schools of Music.*

PERFORMANCE OPPORTUNITIES

College Choir • Vocé Blue • College Band

Jazz Combo • Jazz Band

Percussion Ensemble • String Ensemble

Guitar Ensemble • Piano Ensemble

East Central College

1964 Prairie Dell Road • Union, Missouri

EAST CENTRAL COLLEGE

2022-23
SEASON

**CONCERT
SERIES**