

---

# Section 1

## Student Characteristics

---

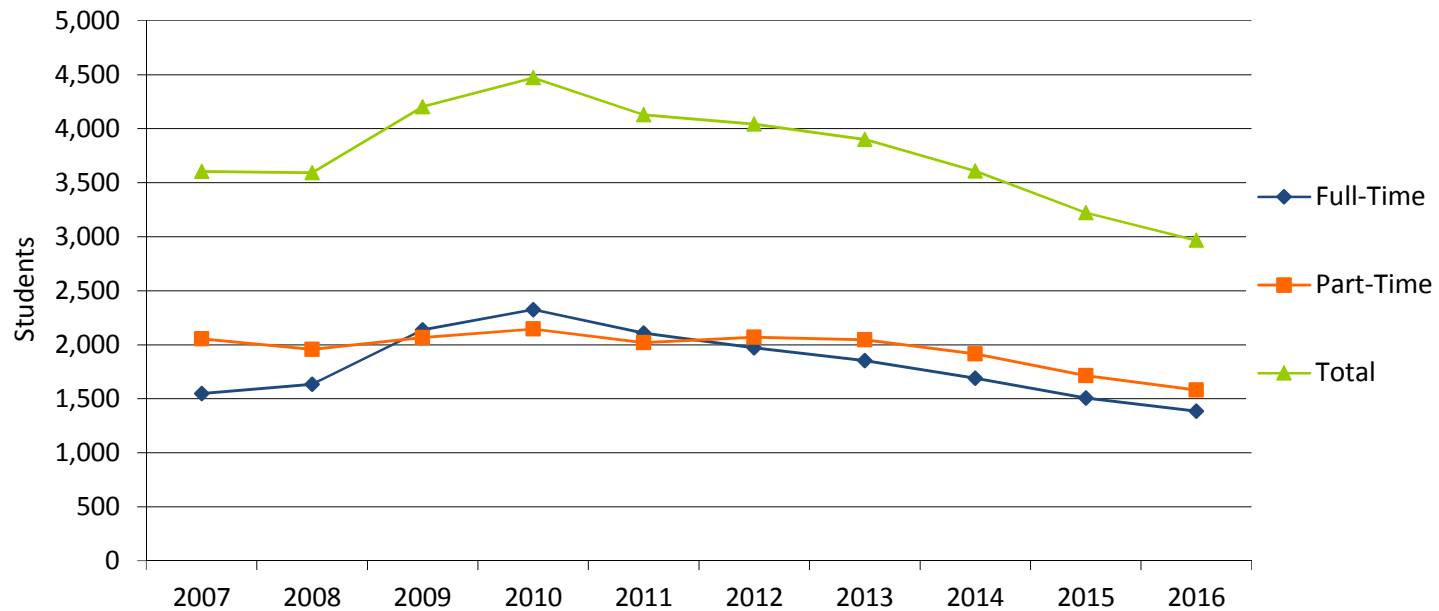
### 1.1 Fall 2016 Student Characteristics

	Freshmen	Sophomore	Other	Dual Credit/ Dual Enrolled	Dual Tech Credit	Total	% of Total
<b>Total</b>	1,179	1,030	334	423	0	2,966	100.0%
<b>Gender</b>							
Male	476	368	102	186	0	1,132	38.2%
Female	703	662	232	237	0	1,834	61.8%
<b>Enrollment Status</b>							
Full-Time	680	594	108	3	0	1,385	46.7%
Part-Time	499	436	226	420	0	1,581	53.3%
<b>Developmental Courses</b>							
1 course	321	86	6	0	0	413	13.9%
2 courses	138	5	0	0	0	143	4.8%
3+ courses	48	0	0	0	0	48	1.6%
<b>Location</b>							
In-District	684	621	187	321	0	1,813	61.1%
Out-of-District	489	405	147	102	0	1,143	38.5%
Out-of-State	3	0	0	0	0	3	0.1%
International	3	4	0	0	0	7	0.2%
Unknown	0	0	0	0	0	0	0.0%
<b>Age</b>							
< 18	64	8	0	360	0	432	14.6%
18-19	628	261	2	59	0	950	32.0%
20-21	153	299	68	0	0	520	17.5%
22-24	79	133	94	0	0	306	10.3%
25-29	98	124	52	0	0	274	9.2%
30-34	53	74	32	0	0	159	5.4%
35-39	42	41	37	0	0	120	4.0%
40-49	35	61	29	0	0	125	4.2%
50-64	23	27	20	0	0	70	2.4%
65 and older	3	2	0	0	0	5	0.2%
Unknown	1	0	0	4	0	5	0.2%
<b>Race/Ethnicity</b>							
American Indian/Alaska Native	4	7	3	0	0	14	0.5%
Asian	11	5	1	1	0	18	0.6%
Black or African American	15	10	1	0	0	26	0.9%
Hispanic	26	21	9	2	0	58	2.0%
Native Hawaiian/Pacific Islander	4	1	0	0	0	5	0.2%
Nonresident Alien	0	1	0	0	0	1	0.0%
Race/Ethnicity Unknown	12	7	3	3	0	25	0.8%
Two or more races	14	1	0	4	0	19	0.6%
White	1,093	977	317	413	0	2,800	94.4%

Source: Colleague Fall Census

## 1.2 Fall Credit Enrollment By Enrollment Status

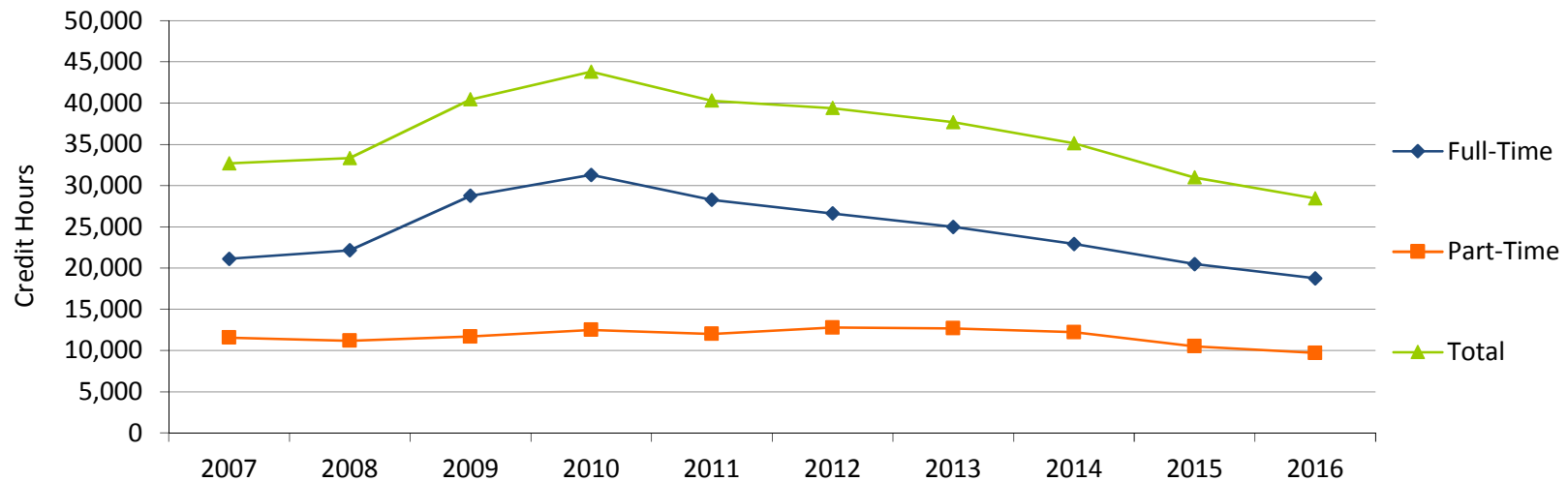
	2007	2008	2009	2010	2011	2012	2013	2014	2015	2016	% Change	
											2007-2016	2015-2016
Total	3,604	3,591	4,203	4,471	4,127	4,043	3,899	3,606	3,222	2,966	-17.7%	-7.9%
<b>Headcount</b>												
Full-Time	1,549	1,635	2,137	2,325	2,108	1,972	1,852	1,690	1,508	1,385	-10.6%	-8.2%
Part-Time	2,055	1,956	2,066	2,146	2,019	2,071	2,047	1,916	1,714	1,581	-23.1%	-7.8%
<b>Percentages</b>												
Full-Time	43.0%	43.0%	50.8%	52.0%	52.0%	48.8%	47.5%	46.9%	46.8%	46.7%		
Part-Time	57.0%	57.0%	49.2%	48.0%	48.0%	51.2%	52.5%	53.1%	53.2%	53.3%		



Source: IPEDS

### 1.3 Fall Credit Hours

	2007	2008	2009	2010	2011	2012	2013	2014	2015	2016	% Change	
											2007-2016	2015-2016
Total	32,677	33,328	40,444	43,787	40,291	39,383	37,670	35,125	30,982	28,442	-13.0%	-8.2%
<b>Credit Hours</b>												
Full-Time	21,109	22,150	28,756	31,288	28,268	26,610	24,984	22,912	20,476	18,746	-11.2%	-8.4%
Part-Time	11,568	11,178	11,687	12,498	12,022	12,772	12,686	12,212	10,505	9,696	-16.2%	-7.7%
<b>Percentages</b>												
Full-Time	64.6%	66.5%	71.1%	71.5%	71.5%	67.6%	66.3%	65.2%	66.1%	65.9%		
Part-Time	35.4%	33.5%	28.9%	28.5%	28.5%	32.4%	33.7%	34.8%	33.9%	34.1%		

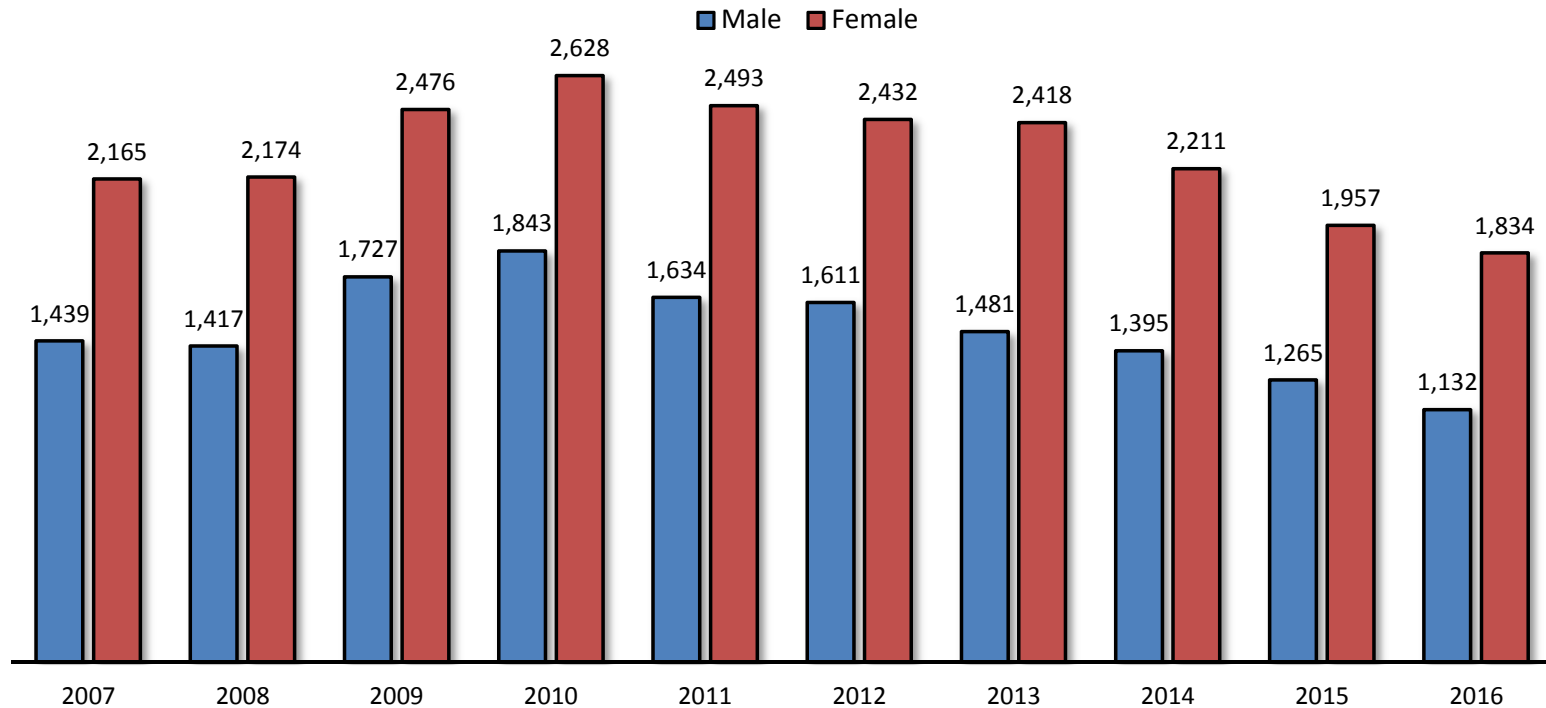


### 1.4 Fall Full-Time Equivalent (FTE) Enrollment

	2007	2008	2009	2010	2011	2012	2013	2014	2015	2016	% Change	
											2007-2016	2015-2016
FTE	2,178	2,222	2,696	2,919	2,686	2,626	2,511	2,342	2,065	1,896	-12.9%	-8.2%

### 1.5 Fall Credit Enrollment By Gender

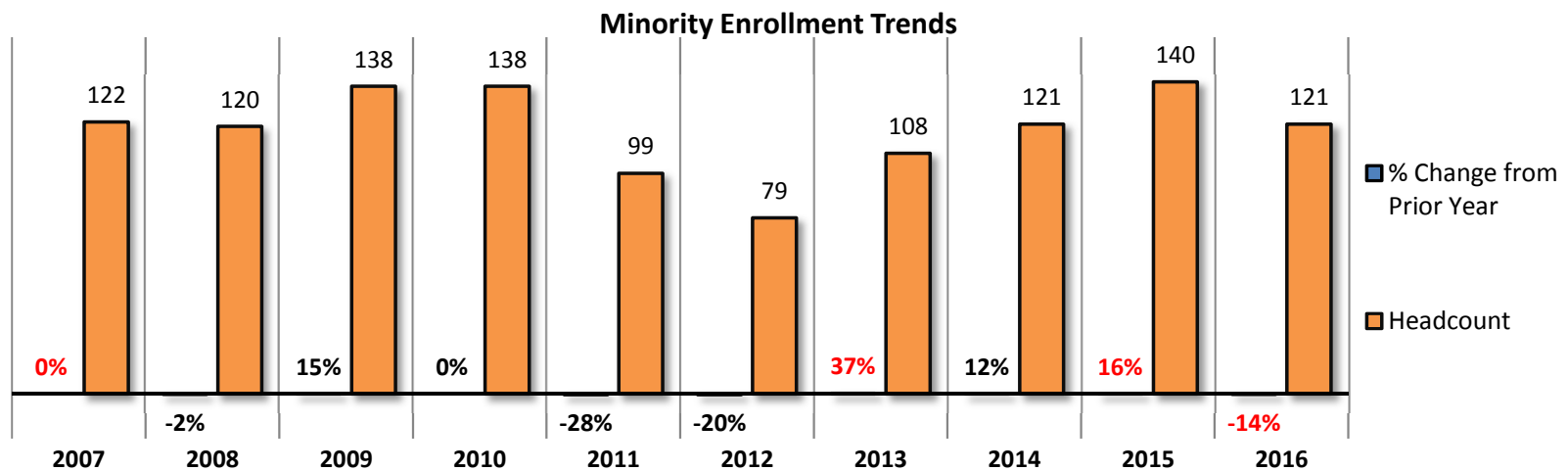
	2007	2008	2009	2010	2011	2012	2013	2014	2015	2016	% Change	
											2007-2016	2015-2016
<b>Total</b>	3,604	3,591	4,203	4,471	4,127	4,043	3,899	3,606	3,222	2,966	-17.7%	-7.9%
<b>Headcount</b>												
Male	1,439	1,417	1,727	1,843	1,634	1,611	1,481	1,395	1,265	1,132	-21.3%	-10.5%
Female	2,165	2,174	2,476	2,628	2,493	2,432	2,418	2,211	1,957	1,834	-15.3%	-6.3%
<b>Percentages</b>												
Male	39.9%	39.5%	41.1%	41.2%	41.2%	39.8%	38.0%	38.7%	39.3%	38.2%		
Female	60.1%	60.5%	58.9%	58.8%	58.8%	60.2%	62.0%	61.3%	60.7%	61.8%		



Source: IPEDS

## 1.6 Fall Credit Enrollment By Ethnicity

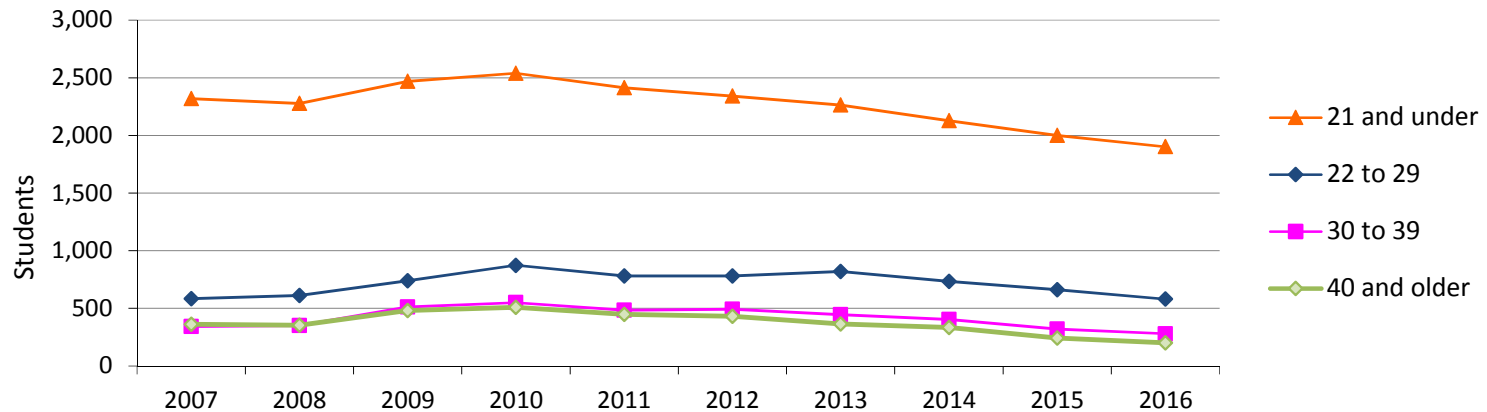
											% Change	
	2007	2008	2009	2010	2011	2012	2013	2014	2015	2016	2007-2016	2015-2016
Total	3,604	3,591	4,203	4,471	4,127	4,043	3,899	3,606	3,222	2,966	-17.7%	-7.9%
<b>Race/Ethnicity*</b>												
American Indian/Alaska Native	15	11	14	19	16	12	10	17	26	14	-6.7%	-46.2%
Asian	21	20	23	12	11	11	23	19	21	18	-14.3%	-14.3%
Black or African American	36	46	46	47	35	23	22	36	33	26	-27.8%	-21.2%
Hispanic	50	43	54	57	34	33	47	46	58	58	16.0%	0.0%
Native Hawaiian/Pacific Islander	na	na	1	3	3	0	6	3	2	5	na	150.0%
Nonresident Alien	0	3	3	1	1	0	0	0	2	1	na	200.0%
Race/Ethnicity Unknown	225	160	124	93	78	85	49	61	35	25	-88.9%	-28.6%
Two or more races	na	na	4	6	6	0	2	1	3	19	na	533.3%
White	3,257	3,308	3,934	4,233	3,943	3,879	3,740	3,423	3,042	2,800	-14.0%	-8.0%
<b>Percentages</b>												
American Indian/Alaska Native	0.4%	0.3%	0.3%	0.4%	0.4%	0.3%	0.3%	0.5%	0.8%	0.5%		
Asian	0.6%	0.6%	0.5%	0.3%	0.3%	0.3%	0.6%	0.5%	0.7%	0.6%		
Black or African American	1.0%	1.3%	1.1%	1.1%	0.8%	0.6%	0.6%	1.0%	1.0%	0.9%		
Hispanic	1.4%	1.2%	1.3%	1.3%	0.8%	0.8%	1.2%	1.3%	1.8%	2.0%		
Native Hawaiian/Pacific Islander	na	na	na	0.1%	0.1%	0.0%	0.2%	0.1%	0.1%	0.2%		
Nonresident Alien	0.0%	0.1%	0.1%	0.0%	0.0%	0.0%	0.0%	0.0%	0.1%	0.0%		
Race/Ethnicity Unknown	6.2%	4.5%	3.0%	2.1%	1.9%	2.1%	1.3%	1.7%	1.1%	0.8%		
Two or more races	na	na	na	0.1%	0.1%	0.0%	0.1%	0.0%	0.1%	0.6%		
White	90.4%	92.1%	93.6%	94.7%	95.5%	95.9%	95.9%	94.9%	94.4%	94.4%		



Source: IPEDS

## 1.7 Fall Credit Enrollment by Age

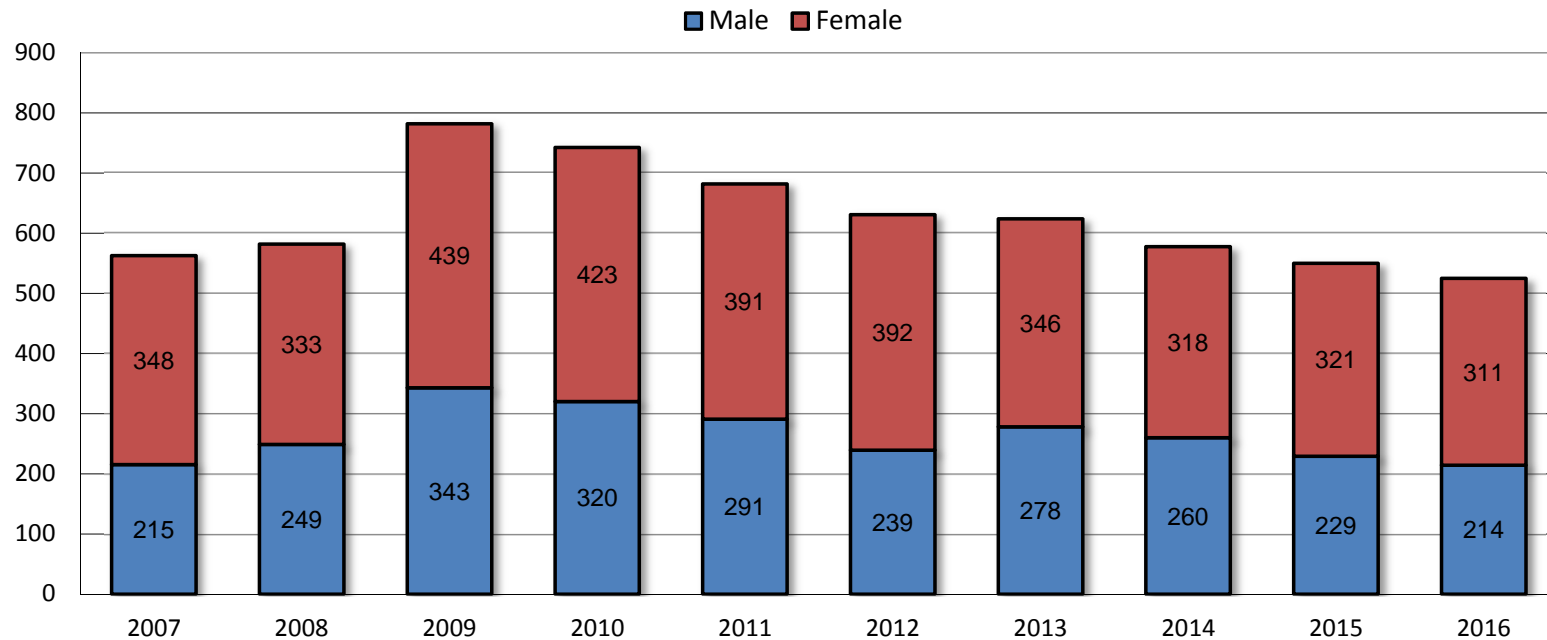
	2007	2008	2009	2010	2011	2012	2013	2014	2015	2016	% Change	
											2007-2016	2015-2016
<b>Total</b>	3,604	3,591	4,203	4,471	4,127	4,043	3,899	3,606	3,222	2,966	-17.7%	-7.9%
<b>Age Category</b>												
<18	713	628	630	581	527	524	506	456	448	432	-39.4%	-3.6%
18-19	1,098	1,100	1,228	1,297	1,188	1,124	1,117	1,074	992	950	-13.5%	-4.2%
20-21	507	549	612	661	698	694	641	597	560	520	2.6%	-7.1%
22-24	278	300	368	435	387	399	394	382	358	306	10.1%	-14.5%
25-29	305	312	371	438	395	381	426	351	302	274	-10.2%	-9.3%
30-34	188	184	285	309	277	306	270	236	183	159	-15.4%	-13.1%
35-39	154	166	227	240	207	185	176	168	137	120	-22.1%	-12.4%
40-49	240	230	315	322	289	273	237	200	170	125	-47.9%	-26.5%
50-64	79	82	126	142	117	144	119	127	67	70	-11.4%	4.5%
65 and older	42	40	41	45	41	13	9	6	5	5	-88.1%	0.0%
Unknown	0	0	0	1	1	0	4	9	0	5	na	na
<b>Percentages</b>												
<18	20%	17%	15%	13%	13%	13%	13%	13%	14%	15%		
18-19	30%	31%	29%	29%	29%	28%	29%	30%	31%	32%		
20-21	14%	15%	15%	15%	17%	17%	16%	17%	17%	18%		
22-24	8%	8%	9%	10%	9%	10%	10%	11%	11%	10%		
25-29	8%	9%	9%	10%	10%	9%	11%	10%	9%	9%		
30-34	5%	5%	7%	7%	7%	8%	7%	7%	6%	5%		
35-39	4%	5%	5%	5%	5%	5%	5%	5%	4%	4%		
40-49	7%	6%	7%	7%	7%	7%	6%	6%	5%	4%		
50-64	2%	2%	3%	3%	3%	4%	3%	4%	2%	2%		
65 and older	1%	1%	1%	1%	1%	0%	0%	0%	0%	0%		
Unknown	0%	0%	0%	0%	0%	0%	0%	0%	0%	0%		



Source: IPEDS

## 1.8 Fall Credit Enrollment By Full-Time, First-Time, Degree/Certificate-Seeking Students

	2007	2008	2009	2010	2011	2012	2013	2014	2015	2016	% Change	
											2007-2016	2015-2016
<b>Total*</b>	563	582	782	743	682	631	624	578	550	525	-6.7%	-4.5%
<b>Headcount</b>												
Male	215	249	343	320	291	239	278	260	229	214	-0.5%	-6.6%
Female	348	333	439	423	391	392	346	318	321	311	-10.6%	-3.1%
<b>Percentages</b>												
Male	38.2%	42.8%	43.9%	43.1%	42.7%	37.9%	44.6%	45.0%	41.6%	40.8%		
Female	61.8%	57.2%	56.1%	56.9%	57.3%	62.1%	55.4%	55.0%	58.4%	59.2%		



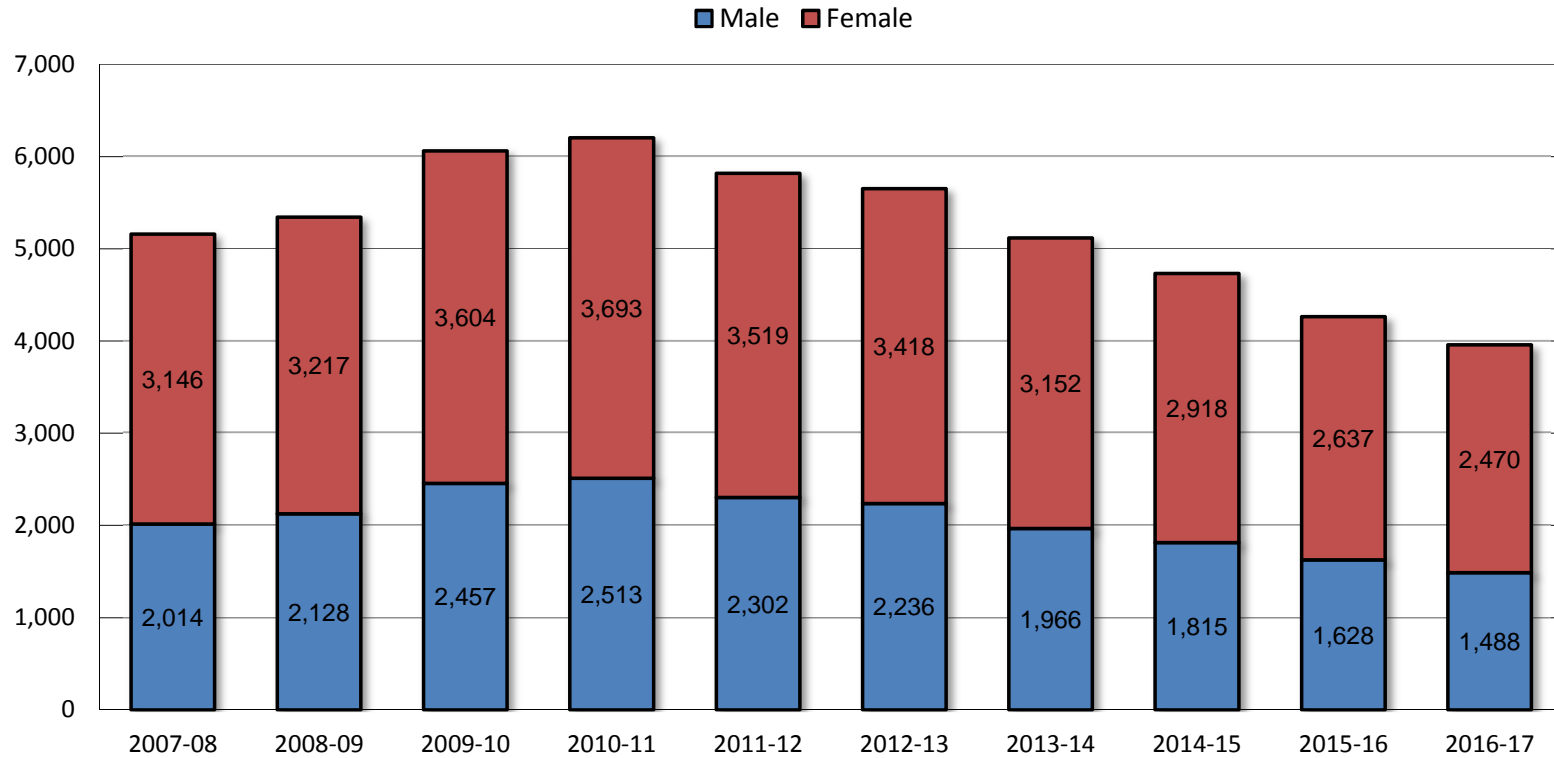
Source: IPEDS

\* Represents the IPEDS Graduation Rate Survey cohort



### 1.9 Twelve-Month\* Unduplicated Headcount

											% Change	
	2007-08	2008-09	2009-10	2010-11	2011-12	2012-13	2013-14	2014-15	2015-16	2016-17	2007-08 to 2016-17	2015-16 to 2016-17
Total	5,160	5,345	6,061	6,206	5,821	5,654	5,118	4,733	4,265	3,958	-23.3%	-7.2%
<b>Headcount</b>												
Male	2,014	2,128	2,457	2,513	2,302	2,236	1,966	1,815	1,628	1,488	-26.1%	-8.6%
Female	3,146	3,217	3,604	3,693	3,519	3,418	3,152	2,918	2,637	2,470	-21.5%	-6.3%

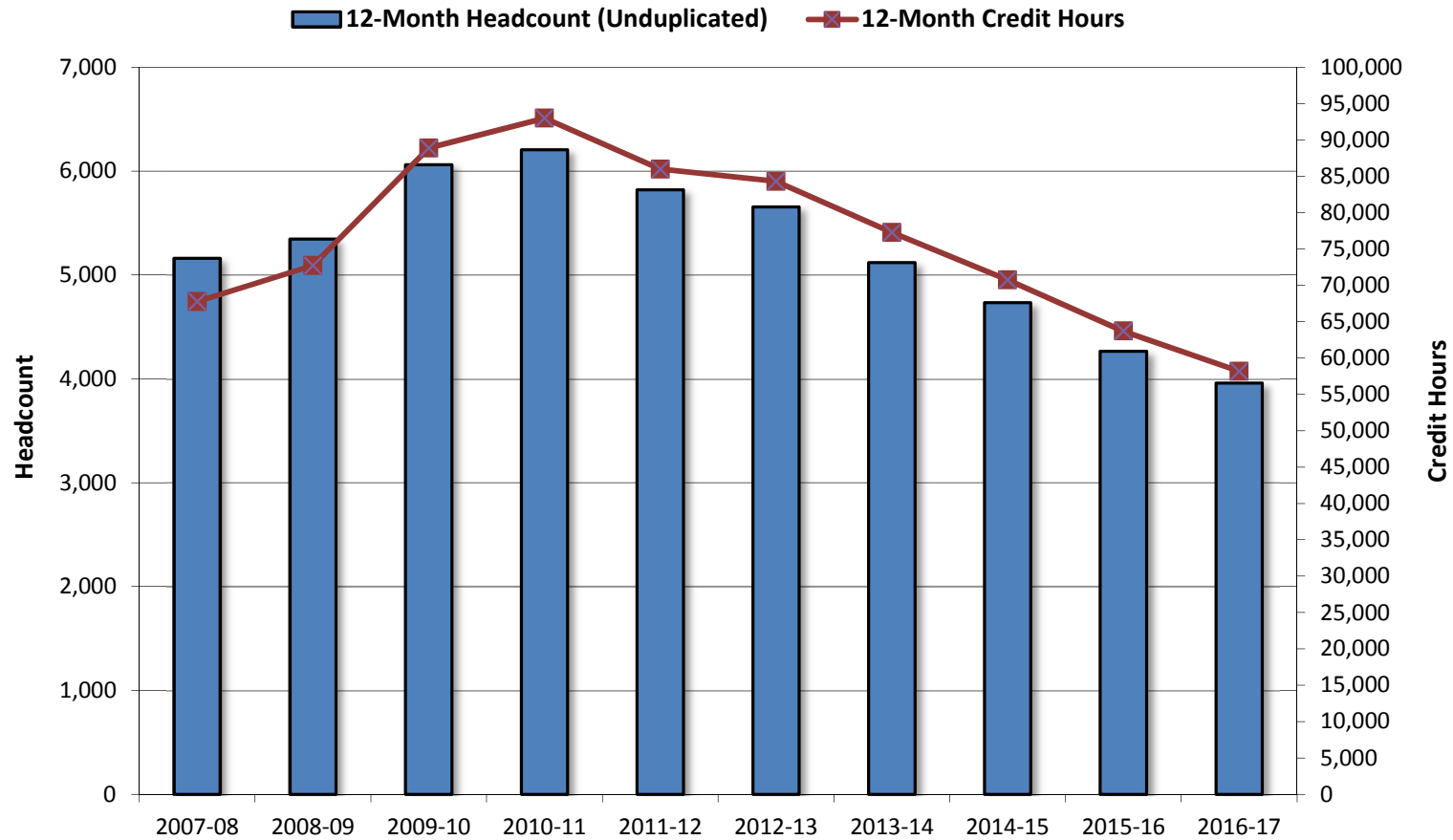


Source: IPEDS

\* July 1 - June 30

### 1.10 Twelve-Month\* Credit Hours & Full-Time Equivalent (FTE) Enrollment

	2007-08	2008-09	2009-10	2010-11	2011-12	2012-13	2013-14	2014-15	2015-16	2016-17	% Change	
											2007-08 to 2016-17	2015-16 to 2016-17
Credit Hours	67,794	72,729	88,883	93,012	85,988	84,312	77,298	70,756	63,721	58,187	-14.2%	-8.7%
FTE	2,236	2,260	2,424	2,963	2,866	2,810	2,577	2,359	2,124	1,940	-13.3%	-8.7%

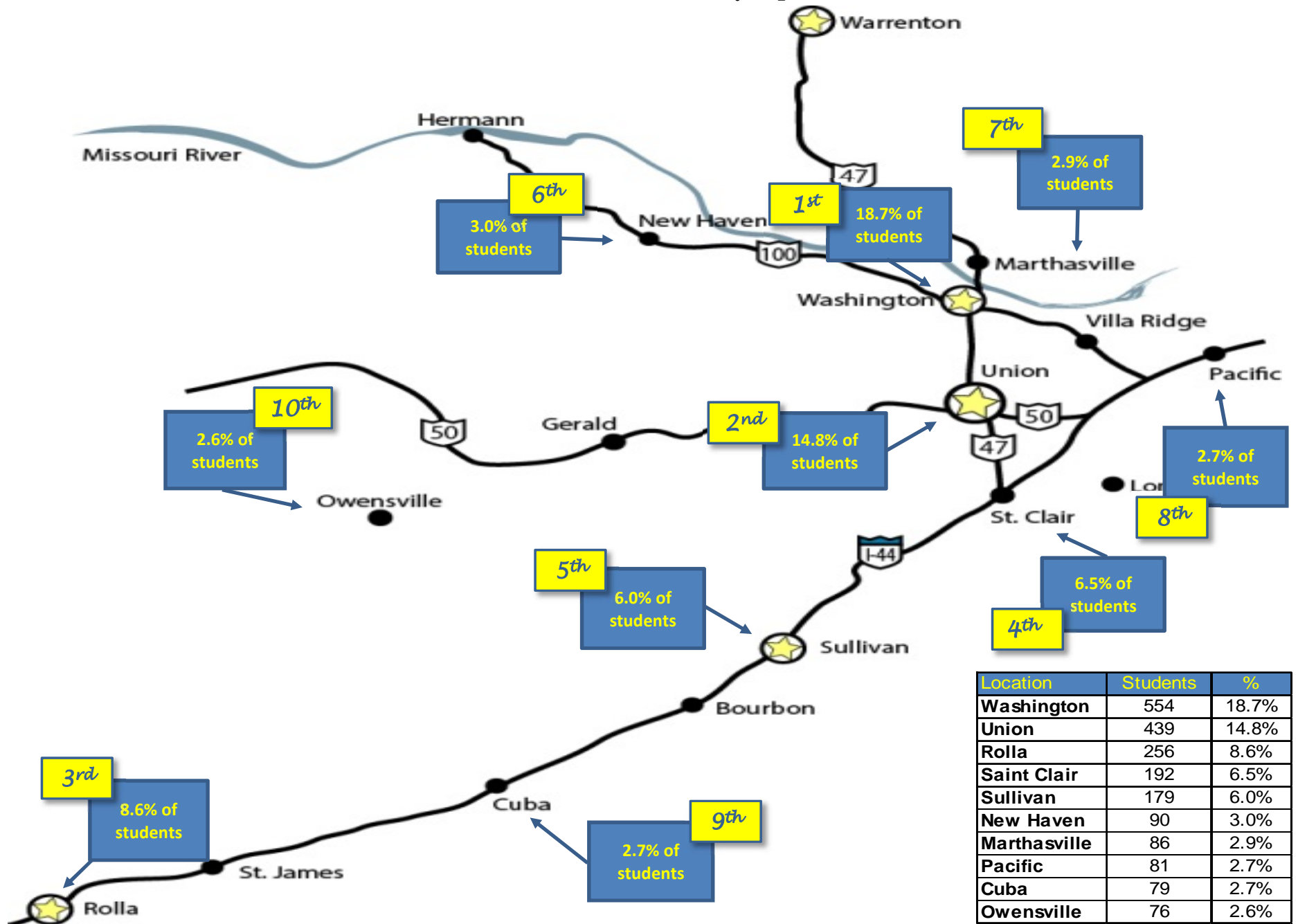


Source: IPEDS

\* July 1 - June 30

Note: FTE for twelve-month instructional activity = twelve-month credit hours/30

### 1.11 Fall 2016 Enrollment by Zip Code



Source: Colleague

Note: Percentages are based on total fall enrollment

### 1.12 Fall Enrollment by Day & Evening Students

	2007	2008	2009	2010	2011	2012	2013	2014	2015	2016	% Change	
											2007-2016	2015-2016
Total	3,604	3,591	4,203	4,471	4,127	4,043	3,899	3,606	3,222	2,966	-17.7%	-7.9%
<b>Course Time(s)</b>												
Day Only	2,053	2,108	2,461	2,679	2,347	2,292	2,376	2,340	1,931	1,860	-9.4%	-3.7%
Evening Only	491	503	461	437	430	451	420	325	341	221	-55.0%	-35.2%
Day & Evening	1,060	980	1,281	1,355	1,350	1,300	1,103	941	950	885	-16.5%	-6.8%

