
Section 1

Student Characteristics

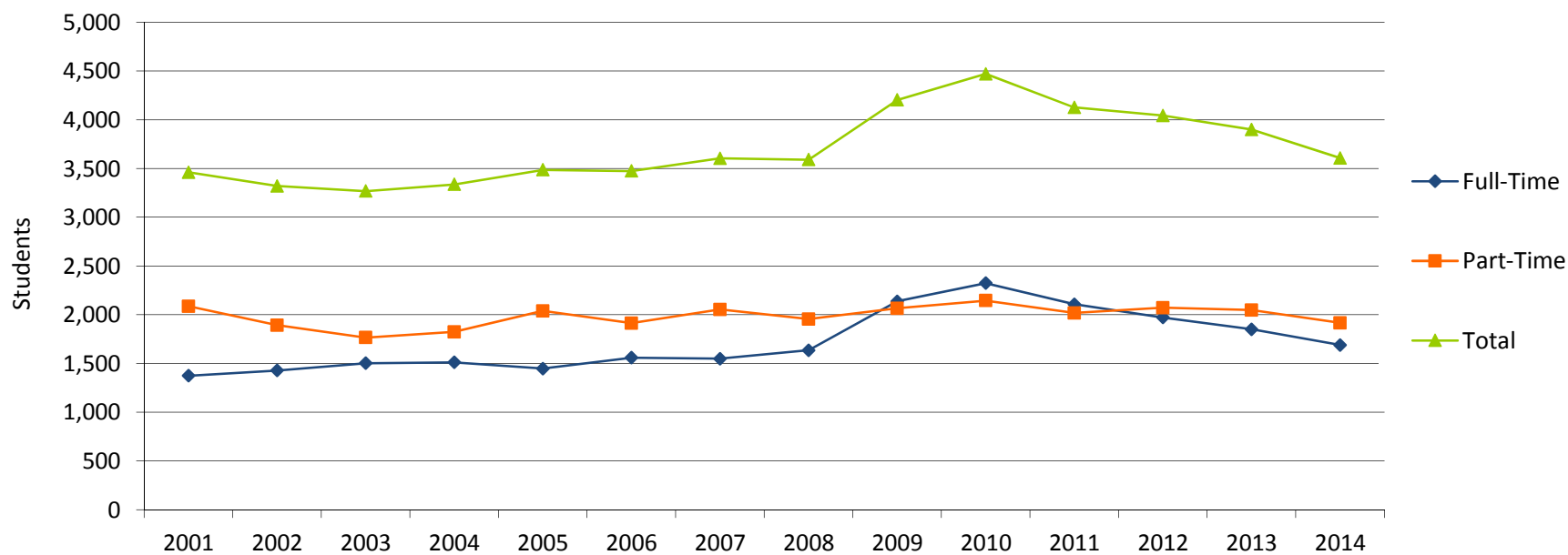
1.1 Fall 2014 Student Characteristics

	Freshmen	Sophomore	Other	Dual Credit/ Dual Enrolled	Dual Tech Credit	Total	% of Total
Total	1,812	1,050	316	333	95	3,606	100.0%
Gender							
Male	757	359	80	117	82	1,395	38.7%
Female	1,055	691	236	216	13	2,211	61.3%
Enrollment Status							
Full-Time	1,059	543	83	2	3	1,690	46.9%
Part-Time	753	507	233	331	92	1,916	53.1%
Developmental Courses							
1 course	570	60	7	0	0	637	17.7%
2 courses	163	6	0	0	0	169	4.7%
3+ courses	85	2	0	0	0	87	2.4%
Location							
In-District	1,034	663	203	251	67	2,218	61.5%
Out-of-District	752	380	112	82	28	1,354	37.5%
Out-of-State	15	4	1	0	0	20	0.6%
International	11	3	0	0	0	14	0.4%
Unknown	0	0	0	0	0	0	0.0%
Age							
< 18	71	1	0	302	82	456	12.6%
18-19	885	154	1	26	8	1,074	29.8%
20-21	253	306	38	0	0	597	16.6%
22-24	162	151	69	0	0	382	10.6%
25-29	155	137	59	0	0	351	9.7%
30-34	101	92	43	0	0	236	6.5%
35-39	73	71	24	0	0	168	4.7%
40-49	74	82	44	0	0	200	5.5%
50-64	35	54	37	0	1	127	3.5%
65 and older	3	2	1	0	0	6	0.2%
Unknown	0	0	0	5	4	9	0.2%
Race/Ethnicity							
American Indian/Alaska Native	7	4	1	5	0	17	0.5%
Asian	9	7	3	0	0	19	0.5%
Black or African American	21	8	5	2	0	36	1.0%
Hispanic	34	9	1	1	1	46	1.3%
Native Hawaiian/Pacific Islander	1	2	0	0	0	3	0.1%
Nonresident Alien	0	0	0	0	0	0	0.0%
Race/Ethnicity Unknown	30	10	1	16	4	61	1.7%
Two or more races	0	1	0	0	0	1	0.0%
White	1,710	1,009	305	309	90	3,423	94.9%

Source: Colleague Fall Census

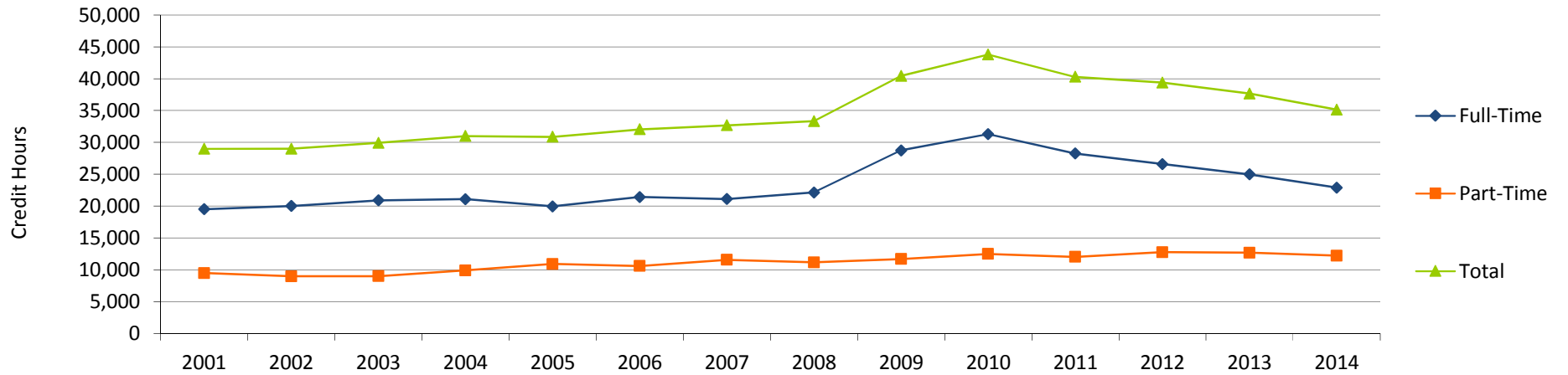
1.2 Fall Credit Enrollment By Enrollment Status

	2001	2002	2003	2004	2005	2006	2007	2008	2009	2010	2011	2012	2013	2014	% Change	
															2001-2014	2013-2014
Total	3,462	3,320	3,269	3,337	3,486	3,474	3,604	3,591	4,203	4,471	4,127	4,043	3,899	3,606	4.2%	-7.5%
Headcount																
Full-Time	1,375	1,428	1,503	1,512	1,447	1,560	1,549	1,635	2,137	2,325	2,108	1,972	1,852	1,690	22.9%	-8.7%
Part-Time	2,087	1,892	1,766	1,825	2,039	1,914	2,055	1,956	2,066	2,146	2,019	2,071	2,047	1,916	-8.2%	-6.4%
Percentages																
Full-Time	39.7%	43.0%	46.0%	45.3%	41.5%	44.9%	43.0%	45.5%	50.8%	52.0%	51.1%	48.8%	47.5%	46.9%		
Part-Time	60.3%	57.0%	54.0%	54.7%	58.5%	55.1%	57.0%	54.5%	49.2%	48.0%	48.9%	51.2%	52.5%	53.1%		



1.3 Fall Credit Hours

	2001	2002	2003	2004	2005	2006	2007	2008	2009	2010	2011	2012	2013	2014	% Change	
															2001-2014	2013-2014
Total	28,989	28,993	29,912	30,989	30,861	32,046	32,677	33,328	40,444	43,787	40,291	39,383	37,670	35,125	21.2%	-6.8%
Credit Hours																
Full-Time	19,512	20,011	20,911	21,083	19,950	21,437	21,109	22,150	28,756	31,288	28,268	26,610	24,984	22,912	17.4%	-8.3%
Part-Time	9,477	8,982	9,001	9,906	10,911	10,609	11,568	11,178	11,687	12,498	12,022	12,772	12,686	12,212	28.9%	-3.7%
Percentages																
Full-Time	67.3%	69.0%	69.9%	68.0%	64.6%	66.9%	64.6%	66.5%	71.1%	71.5%	70.2%	67.6%	66.3%	65.2%		
Part-Time	32.7%	31.0%	30.1%	32.0%	35.4%	33.1%	35.4%	33.5%	28.9%	28.5%	29.8%	32.4%	33.7%	34.8%		

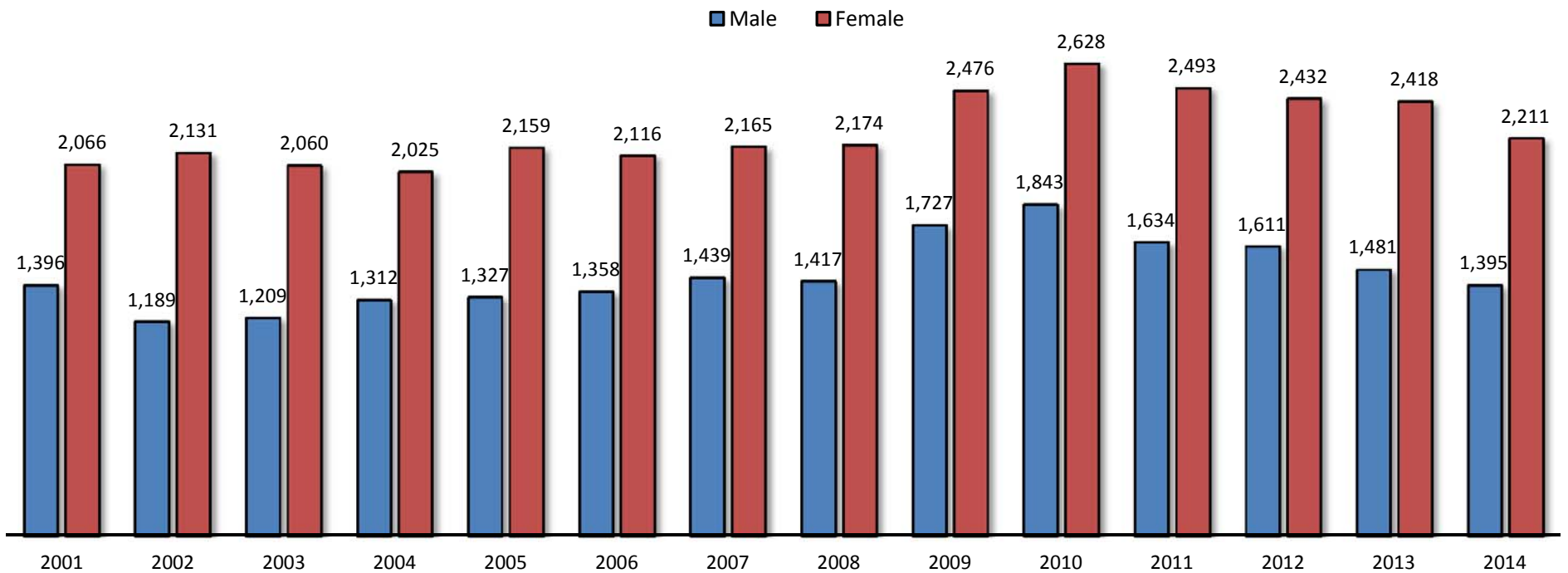


1.4 Fall Full-Time Equivalent (FTE) Enrollment

	2001	2002	2003	2004	2005	2006	2007	2008	2009	2010	2011	2012	2013	2014	% Change	
															2001-2014	2013-2014
FTE	1,932	1,934	1,994	2,066	2,057	2,136	2,178	2,222	2,696	2,919	2,686	2,626	2,511	2,342	21.2%	-6.7%

1.5 Fall Credit Enrollment By Gender

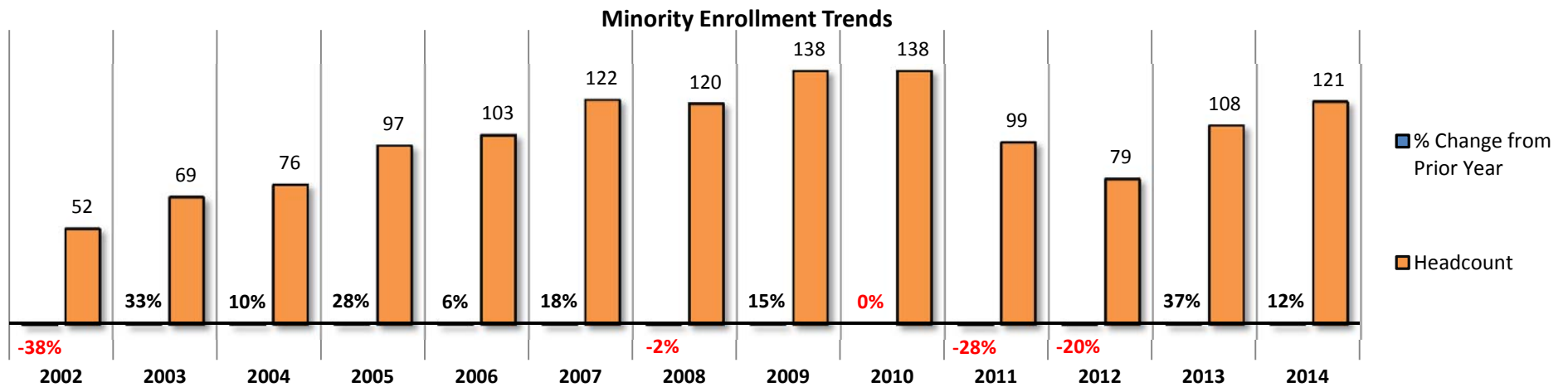
	2001	2002	2003	2004	2005	2006	2007	2008	2009	2010	2011	2012	2013	2014	% Change	
															2001-2014	2013-2014
Total	3,462	3,320	3,269	3,337	3,486	3,474	3,604	3,591	4,203	4,471	4,127	4,043	3,899	3,606	4.2%	-7.5%
Headcount																
Male	1,396	1,189	1,209	1,312	1,327	1,358	1,439	1,417	1,727	1,843	1,634	1,611	1,481	1,395	-0.1%	-5.8%
Female	2,066	2,131	2,060	2,025	2,159	2,116	2,165	2,174	2,476	2,628	2,493	2,432	2,418	2,211	7.0%	-8.6%
Percentages																
Male	40.3%	35.8%	37.0%	39.3%	38.1%	39.1%	39.9%	39.5%	41.1%	41.2%	39.6%	39.8%	38.0%	38.7%		
Female	59.7%	64.2%	63.0%	60.7%	61.9%	60.9%	60.1%	60.5%	58.9%	58.8%	60.4%	60.2%	62.0%	61.3%		



Source: IPEDS

1.6 Fall Credit Enrollment By Ethnicity

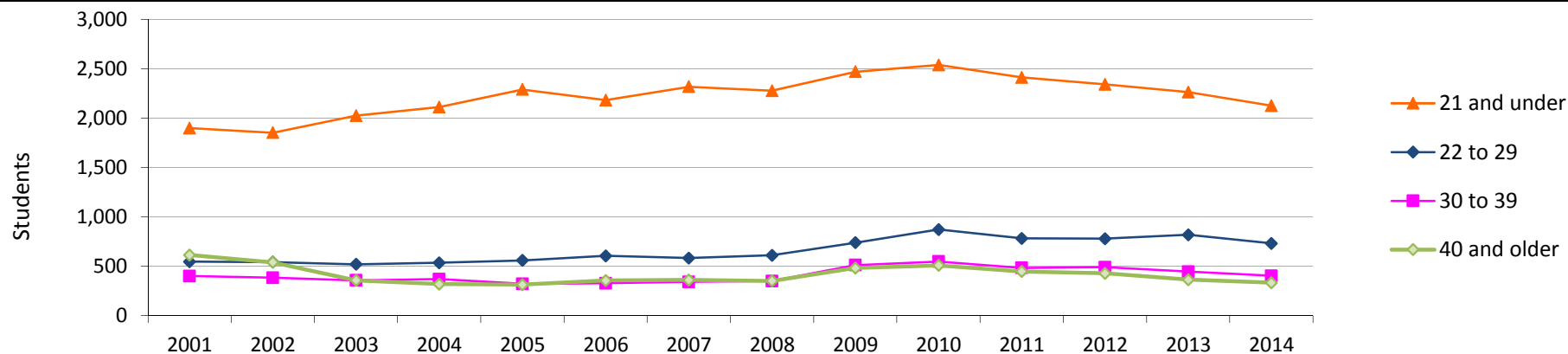
	2001	2002	2003	2004	2005	2006	2007	2008	2009	2010	2011	2012	2013	2014	% Change	
															2001-2014	2013-2014
Total	3,462	3,320	3,269	3,337	3,486	3,474	3,604	3,591	4,203	4,471	4,127	4,043	3,899	3,606	4.2%	-7.5%
Race/Ethnicity*																
American Indian/Alaska Native	13	5	5	10	14	13	15	11	14	19	16	12	10	17	30.8%	70.0%
Asian	21	10	20	22	27	24	21	20	23	12	11	11	23	19	-9.5%	-17.4%
Black or African American	32	18	20	18	21	26	36	46	46	47	35	23	22	36	12.5%	63.6%
Hispanic	18	19	24	26	35	40	50	43	54	57	34	33	47	46	155.6%	-2.1%
Native Hawaiian/Pacific Islander	na	na	na	na	na	na	na	na	1	3	3	0	6	3	na	-50.0%
Nonresident Alien	0	0	1	1	1	5	0	3	3	1	1	0	0	0	na	0.0%
Race/Ethnicity Unknown	0	133	102	110	320	283	225	160	124	93	78	85	49	61	na	24.5%
Two or more races	na	na	na	na	na	na	na	na	4	6	6	0	2	1	na	-50.0%
White	3,378	3,135	3,097	3,150	3,068	3,083	3,257	3,308	3,934	4,233	3,943	3,879	3,740	3,423	1.3%	-8.5%
Percentages																
American Indian/Alaska Native	0.4%	0.2%	0.2%	0.3%	0.4%	0.4%	0.4%	0.3%	0.3%	0.4%	0.4%	0.3%	0.3%	0.5%		
Asian	0.6%	0.3%	0.6%	0.7%	0.8%	0.7%	0.6%	0.6%	0.5%	0.3%	0.3%	0.3%	0.6%	0.5%		
Black or African American	0.9%	0.5%	0.6%	0.5%	0.6%	0.7%	1.0%	1.3%	1.1%	1.1%	0.8%	0.6%	0.6%	1.0%		
Hispanic	0.5%	0.6%	0.7%	0.8%	1.0%	1.2%	1.4%	1.2%	1.3%	1.3%	0.8%	0.8%	1.2%	1.3%		
Native Hawaiian/Pacific Islander	na	na	na	na	na	na	na	na	0.0%	0.1%	0.1%	0.0%	0.2%	0.1%		
Nonresident Alien	0.0%	0.0%	0.0%	0.0%	0.0%	0.1%	0.0%	0.1%	0.1%	0.0%	0.0%	0.0%	0.0%	0.0%		
Race/Ethnicity Unknown	0.0%	4.0%	3.1%	3.3%	9.2%	8.1%	6.2%	4.5%	3.0%	2.1%	1.9%	2.1%	1.3%	1.7%		
Two or more races	na	na	na	na	na	na	na	na	0.1%	0.1%	0.1%	0.0%	0.1%	0.0%		
White	97.6%	94.4%	94.7%	94.4%	88.0%	88.7%	90.4%	92.1%	93.6%	94.7%	95.5%	95.9%	95.9%	94.9%		



Source: IPEDS

1.7 Fall Credit Enrollment by Age

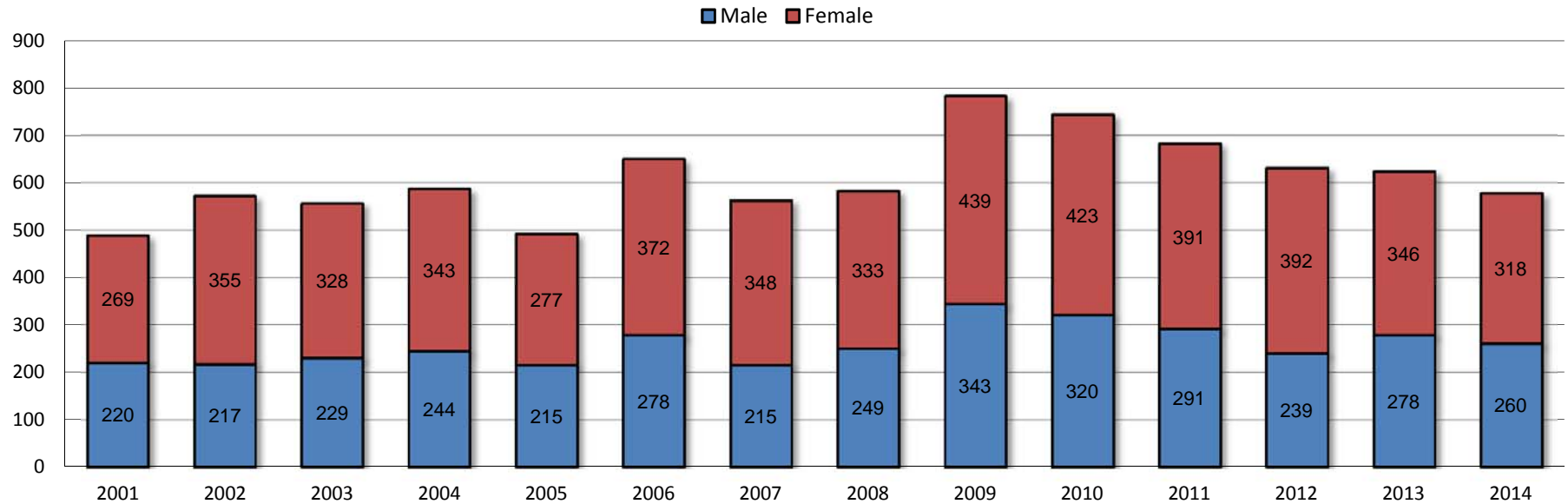
															% Change	
	2001	2002	2003	2004	2005	2006	2007	2008	2009	2010	2011	2012	2013	2014	2001-2014	2013-2014
Total	3,462	3,320	3,269	3,337	3,486	3,474	3,604	3,591	4,203	4,471	4,127	4,043	3,899	3,606	4.2%	-7.5%
Age Category																
<18	424	363	516	566	802	612	713	628	630	581	527	524	506	456	7.5%	-9.9%
18-19	966	1,001	1,006	1,052	1,019	1,078	1,098	1,100	1,228	1,297	1,188	1,124	1,117	1,074	11.2%	-3.8%
20-21	509	489	503	494	469	493	507	549	612	661	698	694	641	597	17.3%	-6.9%
22-24	265	281	274	293	301	306	278	300	368	435	387	399	394	382	44.2%	-3.0%
25-29	282	262	246	242	259	300	305	312	371	438	395	381	426	351	24.5%	-17.6%
30-34	203	188	182	211	187	186	188	184	285	309	277	306	270	236	16.3%	-12.6%
35-39	198	196	176	159	135	142	154	166	227	240	207	185	176	168	-15.2%	-4.5%
40-49	325	278	244	244	227	236	240	230	315	322	289	273	237	200	-38.5%	-15.6%
50-64	142	111	70	56	65	83	79	82	126	142	117	144	119	127	-10.6%	6.7%
65 and older	148	151	44	20	22	38	42	40	41	45	41	13	9	6	-95.9%	-33.3%
Unknown	0	0	8	0	0	0	0	0	0	1	1	0	4	9	na	125.0%
Percentages																
<18	12%	11%	16%	17%	23%	18%	20%	17%	15%	13%	13%	13%	13%	13%		
18-19	28%	30%	31%	32%	29%	31%	30%	31%	29%	29%	29%	28%	29%	30%		
20-21	15%	15%	15%	15%	13%	14%	14%	15%	15%	15%	17%	17%	16%	17%		
22-24	8%	8%	8%	9%	9%	9%	8%	8%	9%	10%	9%	10%	10%	11%		
25-29	8%	8%	8%	7%	7%	9%	8%	9%	9%	10%	10%	9%	11%	10%		
30-34	6%	6%	6%	6%	5%	5%	5%	5%	7%	7%	7%	8%	7%	7%		
35-39	6%	6%	5%	5%	4%	4%	4%	5%	5%	5%	5%	5%	5%	5%		
40-49	9%	8%	7%	7%	7%	7%	7%	6%	7%	7%	7%	7%	6%	6%		
50-64	4%	3%	2%	2%	2%	2%	2%	2%	3%	3%	3%	4%	3%	4%		
65 and older	4%	5%	1%	1%	1%	1%	1%	1%	1%	1%	1%	0%	0%	0%		
Unknown	0%	0%	0%	0%	0%	0%	0%	0%	0%	0%	0%	0%	0%	0%		



Source: IPEDS

1.8 Fall Credit Enrollment By Full-Time, First-Time, Degree/Certificate-Seeking Students

	2001	2002	2003	2004	2005	2006	2007	2008	2009	2010	2011	2012	2013	2014	% Change	
															2001-2014	2013-2014
Total*	489	572	557	587	492	650	563	582	782	743	682	631	624	578	18.2%	-7.4%
Headcount																
Male	220	217	229	244	215	278	215	249	343	320	291	239	278	260	18.2%	-6.5%
Female	269	355	328	343	277	372	348	333	439	423	391	392	346	318	18.2%	-8.1%
Percentages																
Male	45.0%	37.9%	41.1%	41.6%	43.7%	42.8%	38.2%	42.8%	43.9%	43.1%	42.7%	37.9%	44.6%	45.0%		
Female	55.0%	62.1%	58.9%	58.4%	56.3%	57.2%	61.8%	57.2%	56.1%	56.9%	57.3%	62.1%	55.4%	55.0%		

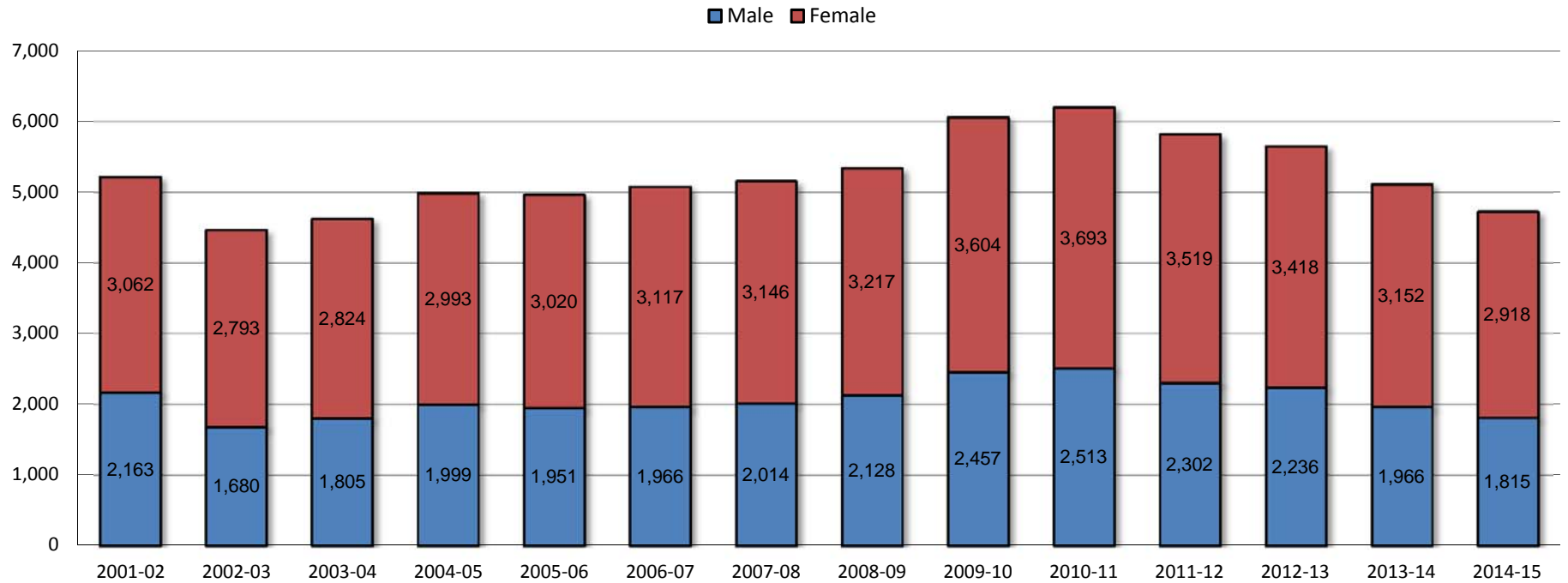


Source: IPEDS

* Represents the IPEDS Graduation Rate Survey cohort

1.9 Twelve-Month* Unduplicated Headcount

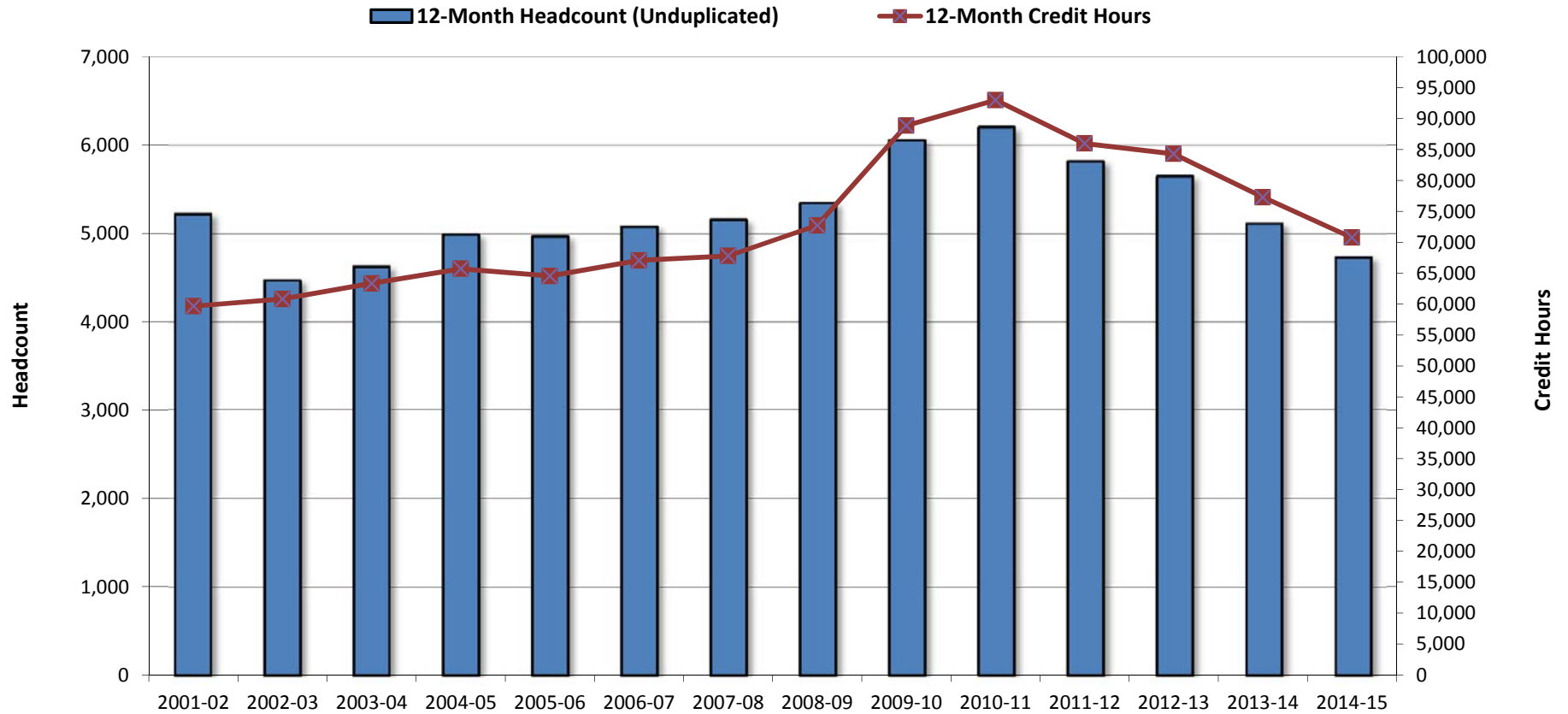
	2001-02	2002-03	2003-04	2004-05	2005-06	2006-07	2007-08	2008-09	2009-10	2010-11	2011-12	2012-13	2013-14	2014-15	% Change	
															2001-02 to 2014-15	2013-14 to 2014-15
Total	5,225	4,473	4,629	4,992	4,971	5,083	5,160	5,345	6,061	6,206	5,821	5,654	5,118	4,733	-9.4%	-7.5%
Headcount																
Male	2,163	1,680	1,805	1,999	1,951	1,966	2,014	2,128	2,457	2,513	2,302	2,236	1,966	1,815	-16.1%	-7.7%
Female	3,062	2,793	2,824	2,993	3,020	3,117	3,146	3,217	3,604	3,693	3,519	3,418	3,152	2,918	-4.7%	-7.4%



Source: IPEDS
* July 1 - June 30

1.10 Twelve-Month* Credit Hours & Full-Time Equivalent (FTE) Enrollment

															% Change	
	2001-02	2002-03	2003-04	2004-05	2005-06	2006-07	2007-08	2008-09	2009-10	2010-11	2011-12	2012-13	2013-14	2014-15	2001-02 to 2014-15	2013-14 to 2014-15
Credit Hours	59,658	60,831	63,347	65,715	64,532	67,072	67,794	72,729	88,883	93,012	85,988	84,312	77,298	70,756	18.6%	-8.5%
FTE	1,989	2,028	2,112	2,191	2,151	2,236	2,260	2,424	2,963	3,100	2,866	2,810	2,577	2,359	18.6%	-8.5%

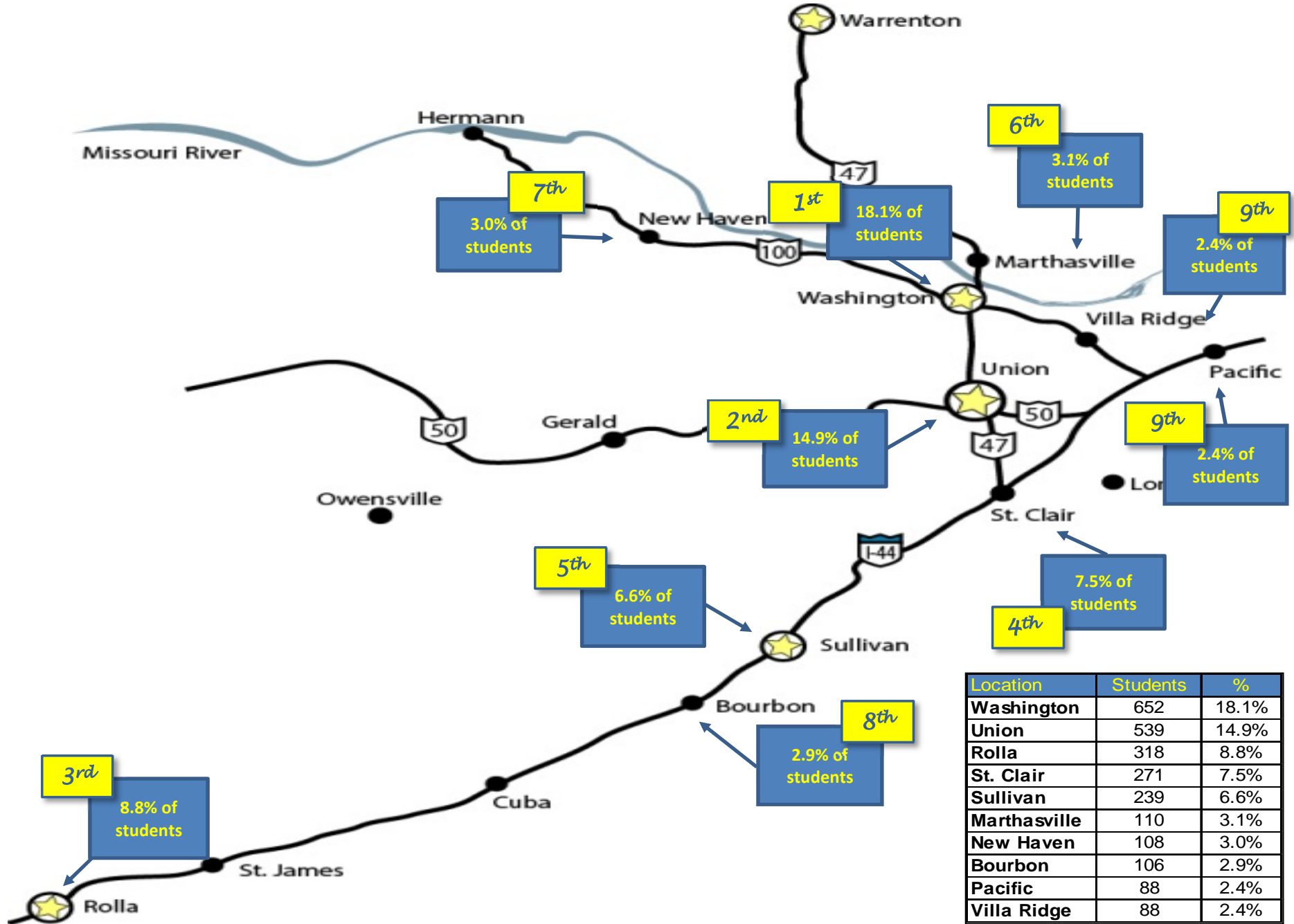


Source: IPEDS

* July 1 - June 30

Note: FTE for twelve-month instructional activity = twelve-month credit hours/30

1.11 Fall 2014 Enrollment by Zip Code



Source: Colleague

Note: Percentages are based on total fall enrollment

1.12 Fall Enrollment by Day & Evening Students

	2003	2004	2005	2006	2007	2008	2009	2010	2011	2012	2013	2014	% Change	
													2003-2014	2013-2014
Total	3,269	3,337	3,486	3,474	3,604	3,591	4,203	4,471	4,127	4,043	3,899	3,606	10.3%	-7.5%
Course Time(s)														
Day Only	1,875	1,957	1,828	1,872	2,053	2,108	2,461	2,679	2,347	2,292	2,376	2,340	24.8%	-1.5%
Evening Only	496	426	469	507	491	503	461	437	430	451	420	325	-34.5%	-22.6%
Day & Evening	898	954	1,189	1,095	1,060	980	1,281	1,355	1,350	1,300	1,103	941	4.8%	-14.7%

