

---

# Section 1

## Student Characteristics

---

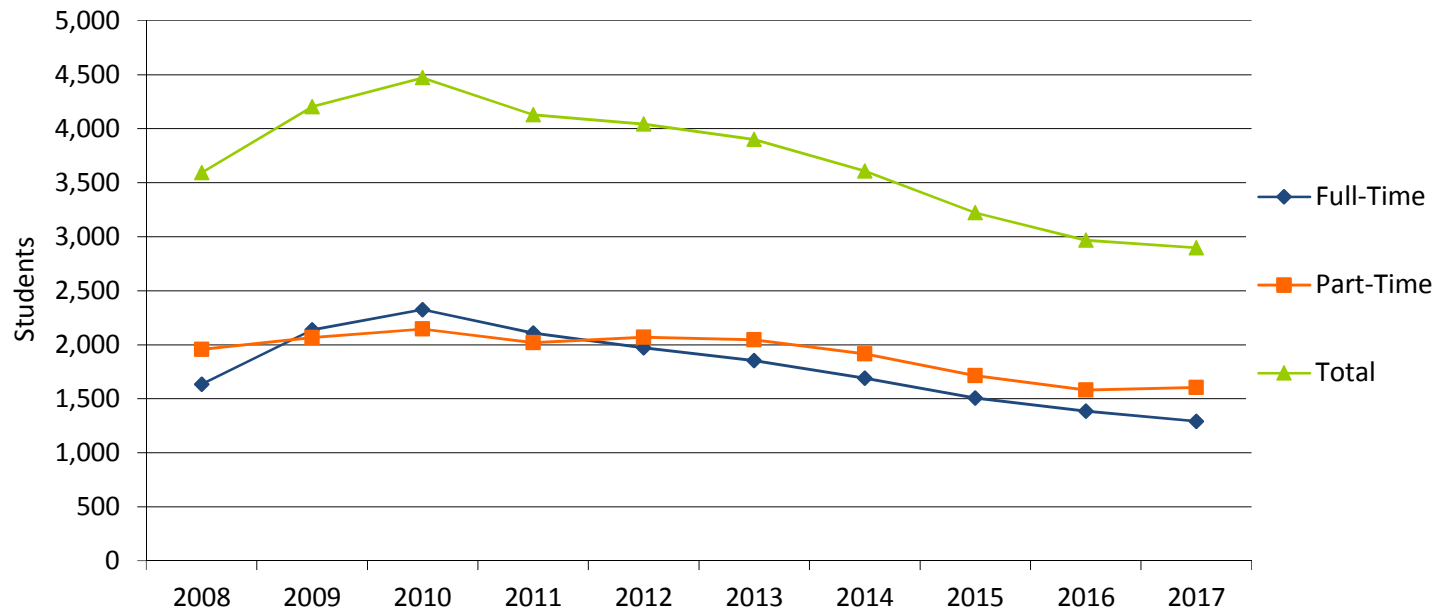
### 1.1 Fall 2017 Student Characteristics

	Freshmen	Sophomore	Other	Dual Credit	Dual Tech Credit	Total	% of Total
<b>Total</b>	1,056	994	296	551	0	2,897	100.0%
<b>Gender</b>							
Male	483	344	86	235	0	1,148	39.6%
Female	573	650	210	316	0	1,749	60.4%
<b>Enrollment Status</b>							
Full-Time	603	596	84	9	0	1,292	44.6%
Part-Time	453	398	212	542	0	1,605	55.4%
<b>Developmental Courses</b>							
1 course	231	49	4	0	0	284	9.8%
2 courses	77	2	0	0	0	79	2.7%
3+ courses	22	0	0	0	0	22	0.8%
<b>Location</b>							
In-District	616	604	161	445	0	1,826	63.0%
Out-of-District	429	381	135	102	0	1,047	36.1%
Out-of-State	6	5	0	0	0	11	0.4%
International	4	4	0	0	0	8	0.3%
Unknown	1	0	0	4	0	5	0.2%
<b>Age</b>							
< 18	35	3	1	482	0	521	18.0%
18-19	562	279	3	67	0	911	31.4%
20-21	146	269	57	0	0	472	16.3%
22-24	76	128	81	0	0	285	9.8%
25-29	94	114	49	0	0	257	8.9%
30-34	50	56	34	0	0	140	4.8%
35-39	42	57	22	0	0	121	4.2%
40-49	35	62	30	0	0	127	4.4%
50-64	13	24	17	0	0	54	1.9%
65 and older	3	2	2	0	0	7	0.2%
Unknown	0	0	0	2	0	2	0.1%
<b>Race/Ethnicity</b>							
American Indian/Alaska Native	5	7	1	1	0	14	0.5%
Asian	10	8	3	5	0	26	0.9%
Black or African American	14	10	3	1	0	28	1.0%
Hispanic	28	18	8	4	0	58	2.0%
Native Hawaiian/Pacific Islander	0	2	0	0	0	2	0.1%
Nonresident Alien	0	0	0	0	0	0	0.0%
Race/Ethnicity Unknown	13	5	2	3	0	23	0.8%
Two or more races	22	6	0	17	0	45	1.6%
White	964	938	279	520	0	2,701	93.2%

Source: Colleague Fall Census

## 1.2 Fall Credit Enrollment By Enrollment Status

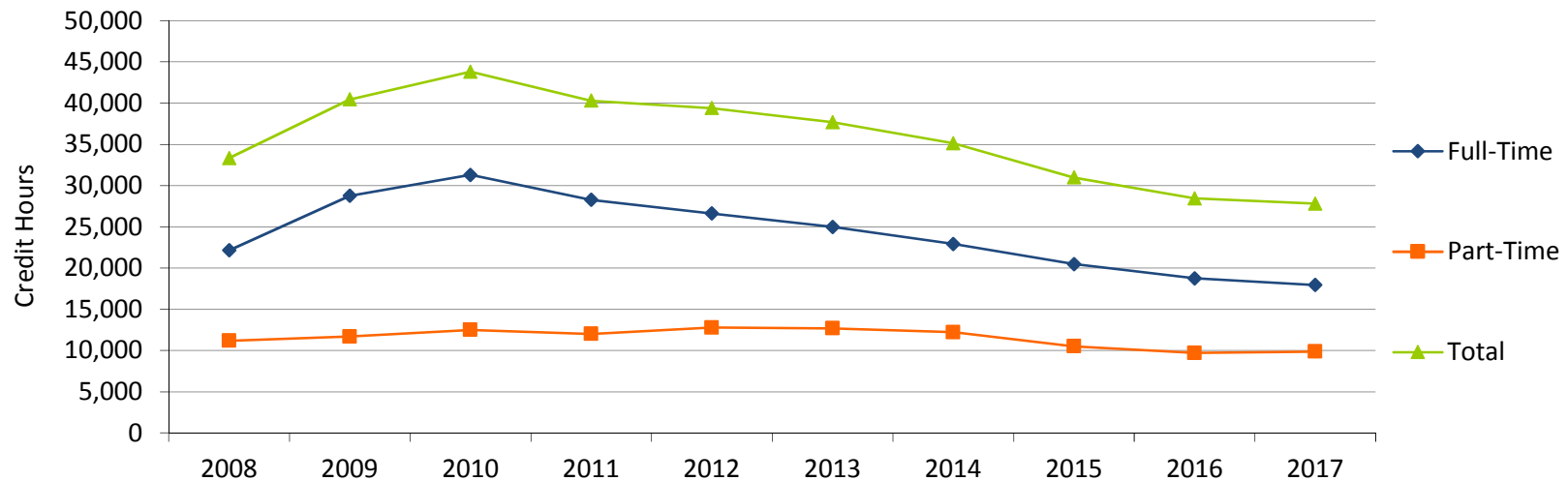
	2008	2009	2010	2011	2012	2013	2014	2015	2016	2017	% Change	
											2008-2017	2016-2017
Total	3,591	4,203	4,471	4,127	4,043	3,899	3,606	3,222	2,966	2,897	-19.3%	-2.3%
<b>Headcount</b>												
Full-Time	1,635	2,137	2,325	2,108	1,972	1,852	1,690	1,508	1,385	1,292	-21.0%	-6.7%
Part-Time	1,956	2,066	2,146	2,019	2,071	2,047	1,916	1,714	1,581	1,605	-17.9%	1.5%
<b>Percentages</b>												
Full-Time	45.5%	43.0%	52.0%	51.1%	52.0%	47.5%	46.9%	46.8%	46.7%	44.6%		
Part-Time	54.5%	57.0%	48.0%	48.9%	48.0%	52.5%	53.1%	53.2%	53.3%	55.4%		



Source: IPEDS

### 1.3 Fall Credit Hours

	2008	2009	2010	2011	2012	2013	2014	2015	2016	2017	% Change	
											2008-2017	2016-2017
Total	33,328	40,444	43,787	40,291	39,383	37,670	35,125	30,982	28,442	27,807	-16.6%	-2.2%
<b>Credit Hours</b>												
Full-Time	22,150	28,756	31,288	28,268	26,610	24,984	22,912	20,476	18,746	17,943	-19.0%	-4.3%
Part-Time	11,178	11,687	12,498	12,022	12,772	12,686	12,212	10,505	9,696	9,864	-11.8%	1.7%
<b>Percentages</b>												
Full-Time	66.5%	71.1%	71.5%	70.2%	71.5%	66.3%	65.2%	66.1%	65.9%	64.5%		
Part-Time	33.5%	28.9%	28.5%	29.8%	28.5%	33.7%	34.8%	33.9%	34.1%	35.5%		

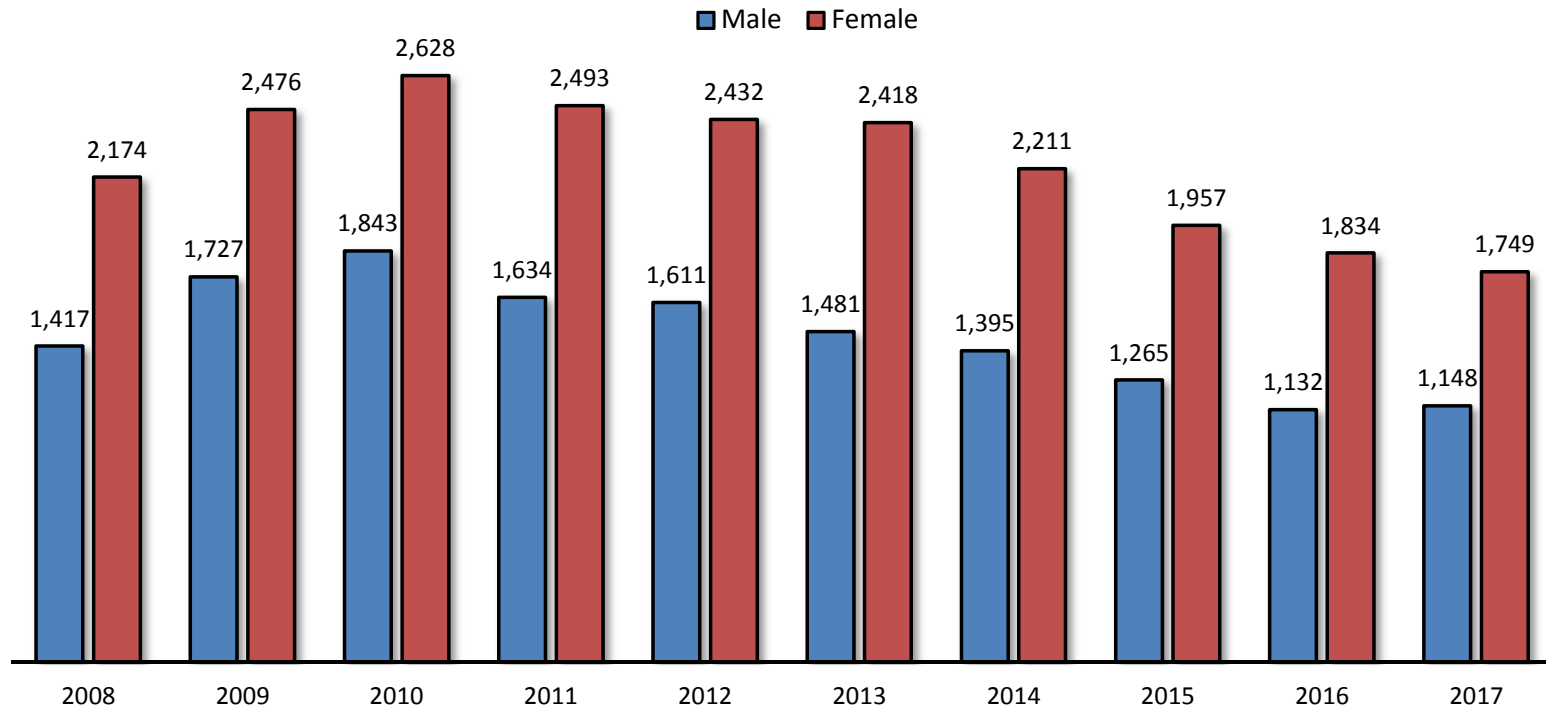


### 1.4 Fall Full-Time Equivalent (FTE) Enrollment

	2008	2009	2010	2011	2012	2013	2014	2015	2016	2017	% Change	
											2008-2017	2016-2017
FTE	2,222	2,696	2,919	2,686	2,626	2,511	2,342	2,065	1,896	1,854	-16.6%	-2.2%

### 1.5 Fall Credit Enrollment By Gender

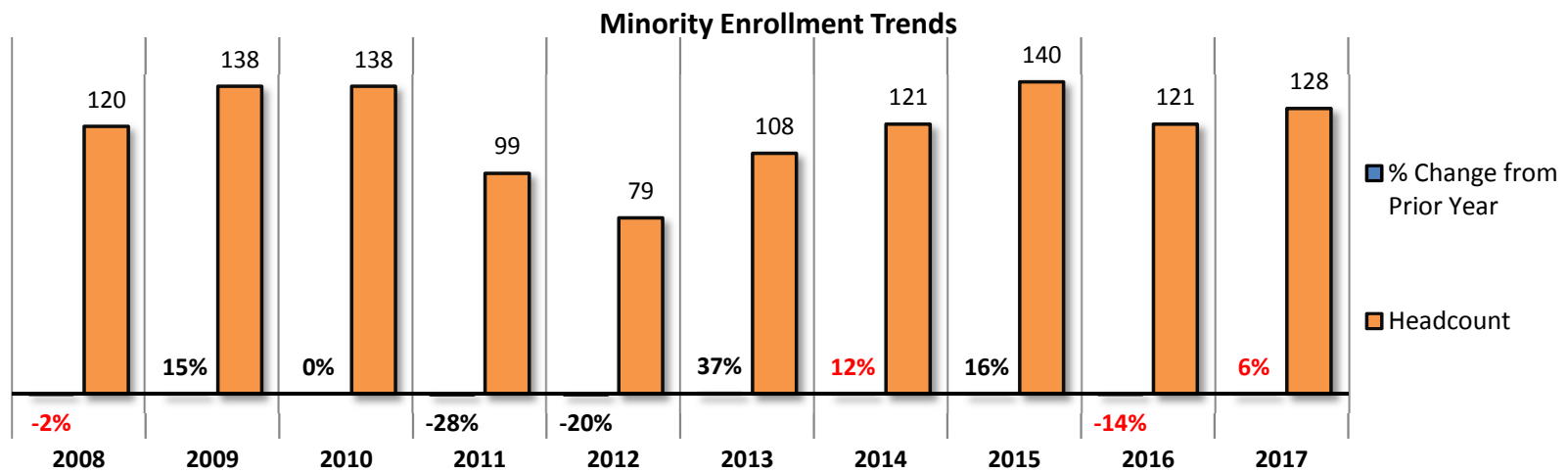
	2008	2009	2010	2011	2012	2013	2014	2015	2016	2017	% Change	
											2008-2017	2016-2017
<b>Total</b>	3,591	4,203	4,471	4,127	4,043	3,899	3,606	3,222	2,966	2,897	-19.3%	-2.3%
<b>Headcount</b>												
Male	1,417	1,727	1,843	1,634	1,611	1,481	1,395	1,265	1,132	1,148	-19.0%	1.4%
Female	2,174	2,476	2,628	2,493	2,432	2,418	2,211	1,957	1,834	1,749	-19.5%	-4.6%
<b>Percentages</b>												
Male	39.5%	41.1%	41.2%	39.6%	41.2%	38.0%	38.7%	39.3%	38.2%	39.6%		
Female	60.5%	58.9%	58.8%	60.4%	58.8%	62.0%	61.3%	60.7%	61.8%	60.4%		



Source: IPEDS

## 1.6 Fall Credit Enrollment By Ethnicity

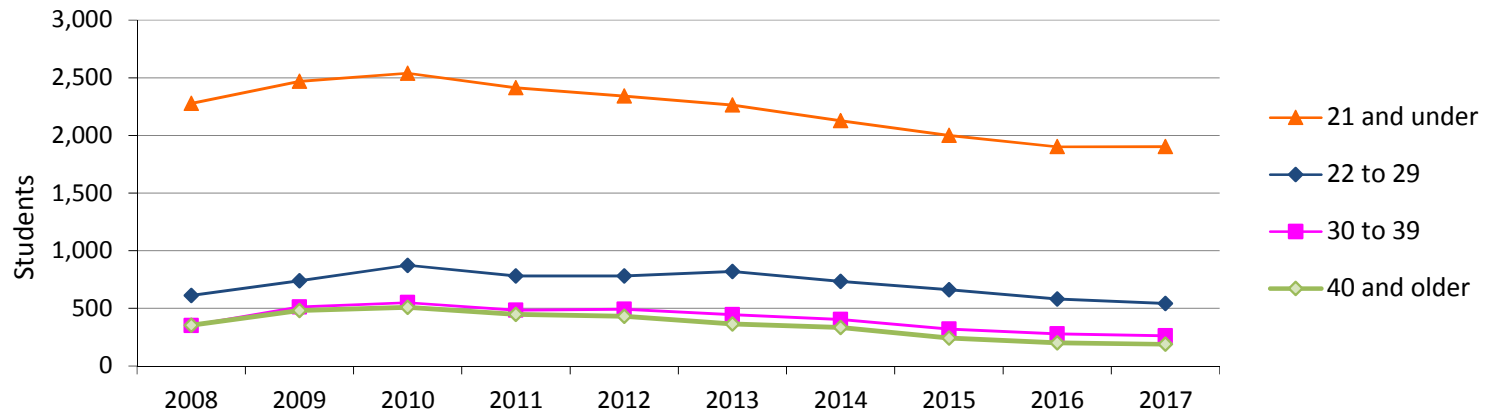
											% Change	
	2008	2009	2010	2011	2012	2013	2014	2015	2016	2017	2008-2017	2016-2017
Total	3,591	4,203	4,471	4,127	4,043	3,899	3,606	3,222	2,966	2,897	-19.3%	-2.3%
<b>Race/Ethnicity*</b>												
American Indian/Alaska Native	11	14	19	16	12	10	17	26	14	14	27.3%	0.0%
Asian	20	23	12	11	11	23	19	21	18	26	30.0%	44.4%
Black or African American	46	46	47	35	23	22	36	33	26	28	-39.1%	7.7%
Hispanic	43	54	57	34	33	47	46	58	58	58	34.9%	0.0%
Native Hawaiian/Pacific Islander	na	1	3	3	0	6	3	2	5	2	na	-60.0%
Nonresident Alien	3	3	1	1	0	0	0	2	1	0	-100.0%	200.0%
Race/Ethnicity Unknown	160	124	93	78	85	49	61	35	25	23	-85.6%	-8.0%
Two or more races	na	4	6	6	0	2	1	3	19	45	na	136.8%
White	3,308	3,934	4,233	3,943	3,879	3,740	3,423	3,042	2,800	2,701	-18.3%	-3.5%
<b>Percentages</b>												
American Indian/Alaska Native	0.3%	0.3%	0.4%	0.4%	0.3%	0.3%	0.5%	0.8%	0.5%	0.5%		
Asian	0.6%	0.5%	0.3%	0.3%	0.3%	0.6%	0.5%	0.7%	0.6%	0.9%		
Black or African American	1.3%	1.1%	1.1%	0.8%	0.6%	0.6%	1.0%	1.0%	0.9%	1.0%		
Hispanic	1.2%	1.3%	1.3%	0.8%	0.8%	1.2%	1.3%	1.8%	2.0%	2.0%		
Native Hawaiian/Pacific Islander	na	na	na	0.1%	0.0%	0.2%	0.1%	0.1%	0.2%	0.1%		
Nonresident Alien	0.1%	0.1%	0.0%	0.0%	0.0%	0.0%	0.0%	0.1%	0.0%	0.0%		
Race/Ethnicity Unknown	4.5%	3.0%	2.1%	1.9%	2.1%	1.3%	1.7%	1.1%	0.8%	0.8%		
Two or more races	na	na	na	0.1%	0.0%	0.1%	0.0%	0.1%	0.6%	1.6%		
White	92.1%	93.6%	94.7%	95.5%	95.9%	95.9%	94.9%	94.4%	94.4%	93.2%		



Source: IPEDS

## 1.7 Fall Credit Enrollment by Age

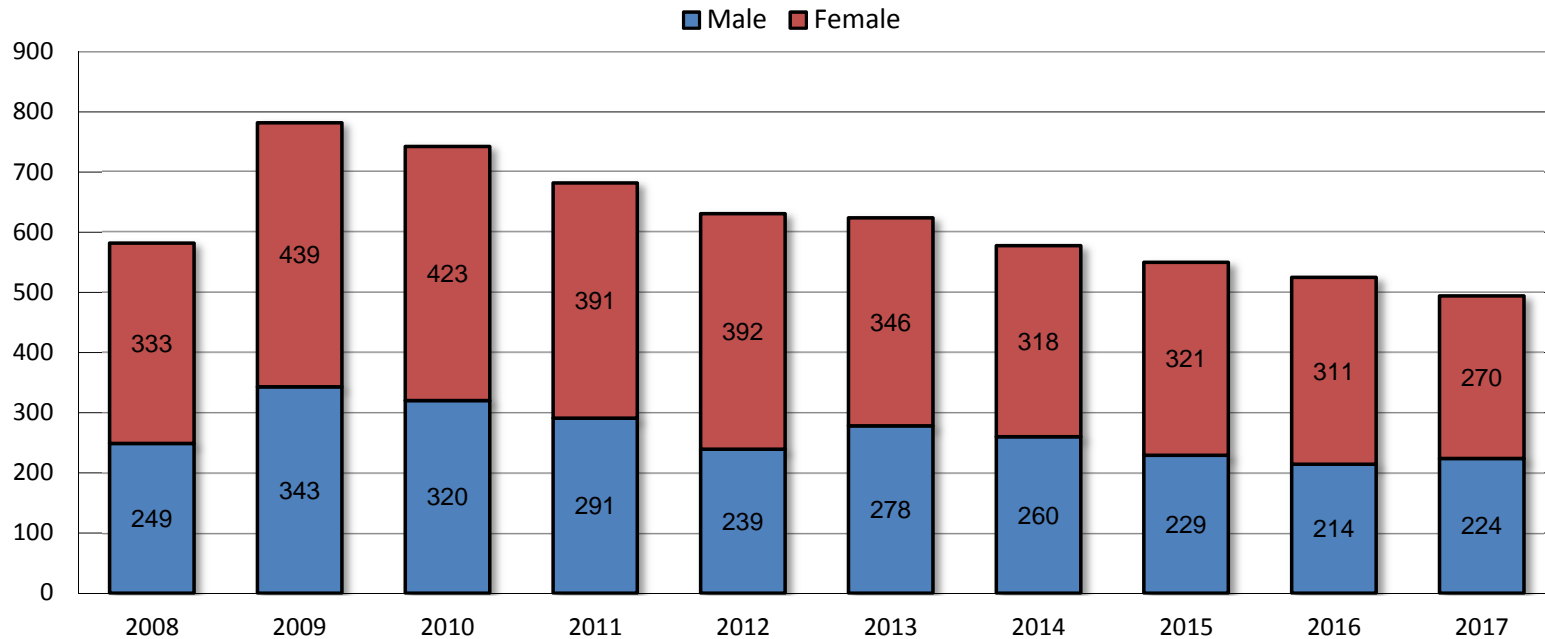
	2008	2009	2010	2011	2012	2013	2014	2015	2016	2017	% Change	
											2008-2017	2016-2017
<b>Total</b>	3,591	4,203	4,471	4,127	4,043	3,899	3,606	3,222	2,966	2,897	-19.3%	-2.3%
<b>Age Category</b>												
<18	628	630	581	527	524	506	456	448	432	521	-17.0%	20.6%
18-19	1,100	1,228	1,297	1,188	1,124	1,117	1,074	992	950	911	-17.2%	-4.1%
20-21	549	612	661	698	694	641	597	560	520	472	-14.0%	-9.2%
22-24	300	368	435	387	399	394	382	358	306	285	-5.0%	-6.9%
25-29	312	371	438	395	381	426	351	302	274	257	-17.6%	-6.2%
30-34	184	285	309	277	306	270	236	183	159	140	-23.9%	-11.9%
35-39	166	227	240	207	185	176	168	137	120	121	-27.1%	0.8%
40-49	230	315	322	289	273	237	200	170	125	127	-44.8%	1.6%
50-64	82	126	142	117	144	119	127	67	70	54	-34.1%	-22.9%
65 and older	40	41	45	41	13	9	6	5	5	7	-82.5%	40.0%
Unknown	0	0	1	1	0	4	9	0	5	2	na	-60.0%
<b>Percentages</b>												
<18	17%	15%	13%	13%	13%	13%	13%	14%	15%	18%		
18-19	31%	29%	29%	29%	28%	29%	30%	31%	32%	31%		
20-21	15%	15%	15%	17%	17%	16%	17%	17%	18%	16%		
22-24	8%	9%	10%	9%	10%	10%	11%	11%	10%	10%		
25-29	9%	9%	10%	10%	9%	11%	10%	9%	9%	9%		
30-34	5%	7%	7%	7%	8%	7%	7%	6%	5%	5%		
35-39	5%	5%	5%	5%	5%	5%	5%	5%	4%	4%		
40-49	6%	7%	7%	7%	7%	6%	6%	5%	4%	4%		
50-64	2%	3%	3%	3%	4%	3%	4%	2%	2%	2%		
65 and older	1%	1%	1%	1%	0%	0%	0%	0%	0%	0%		
Unknown	0%	0%	0%	0%	0%	0%	0%	0%	0%	0%		



Source: IPEDS

## 1.8 Fall Credit Enrollment By Full-Time, First-Time, Degree/Certificate-Seeking Students

	2008	2009	2010	2011	2012	2013	2014	2015	2016	2017	% Change	
											2008-2017	2016-2017
<b>Total*</b>	582	782	743	682	631	624	578	550	525	494	-15.1%	-5.9%
<b>Headcount</b>												
Male	249	343	320	291	239	278	260	229	214	224	-10.0%	4.7%
Female	333	439	423	391	392	346	318	321	311	270	-18.9%	-13.2%
<b>Percentages</b>												
Male	42.8%	43.9%	43.1%	42.7%	37.9%	44.6%	45.0%	41.6%	40.8%	45.3%		
Female	57.2%	56.1%	56.9%	57.3%	62.1%	55.4%	55.0%	58.4%	59.2%	54.7%		



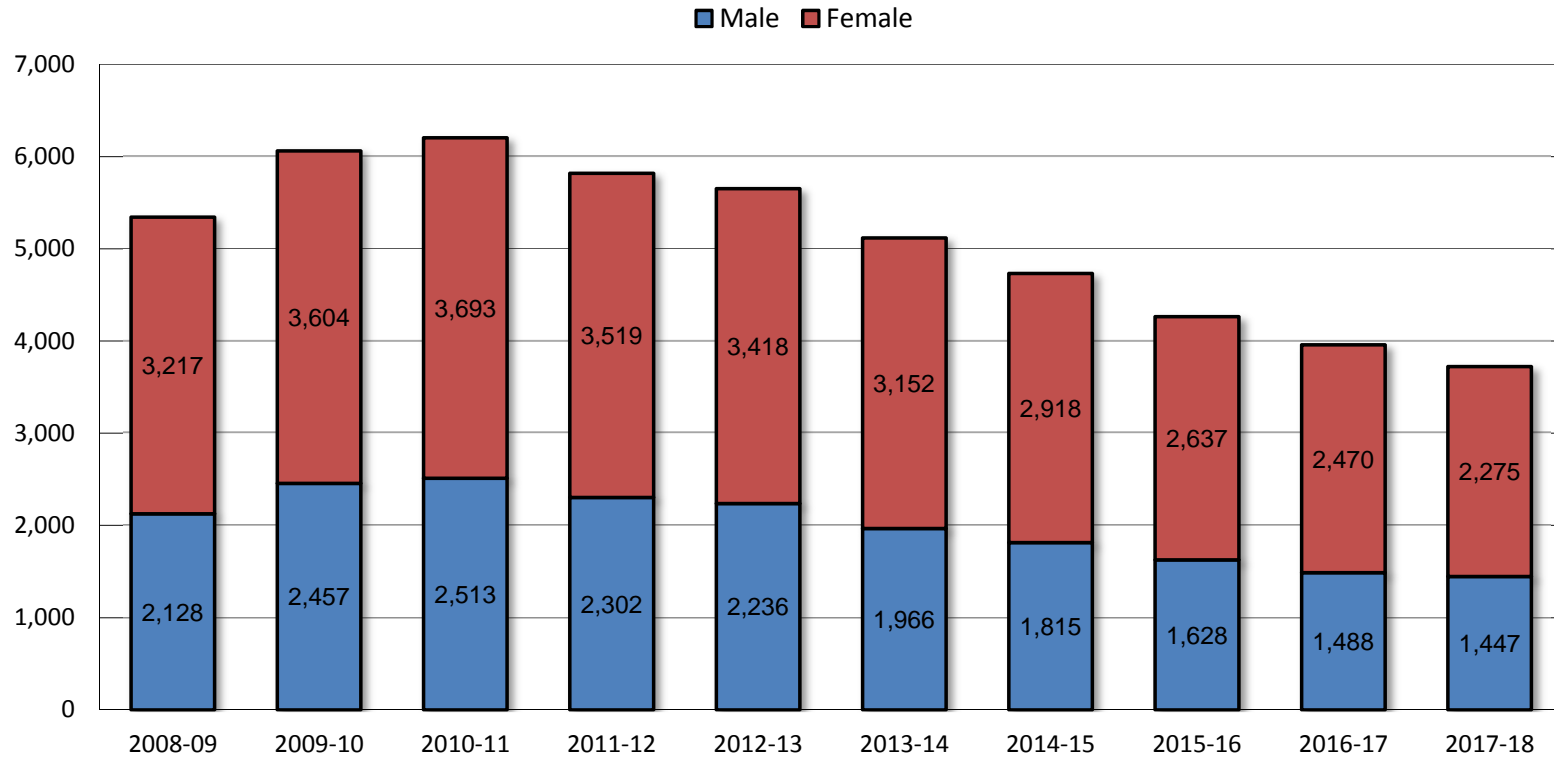
Source: IPEDS

\* Represents the IPEDS Graduation Rate Survey cohort



### 1.9 Twelve-Month\* Unduplicated Headcount

	2008-09	2009-10	2010-11	2011-12	2012-13	2013-14	2014-15	2015-16	2016-17	2017-18	% Change	
											2008-09 to 2017-18	2016-17 to 2017-18
Total	5,345	6,061	6,206	5,821	5,654	5,118	4,733	4,265	3,958	3,722	-30.4%	-6.0%
<b>Headcount</b>												
Male	2,128	2,457	2,513	2,302	2,236	1,966	1,815	1,628	1,488	1,447	-32.0%	-2.8%
Female	3,217	3,604	3,693	3,519	3,418	3,152	2,918	2,637	2,470	2,275	-29.3%	-7.9%

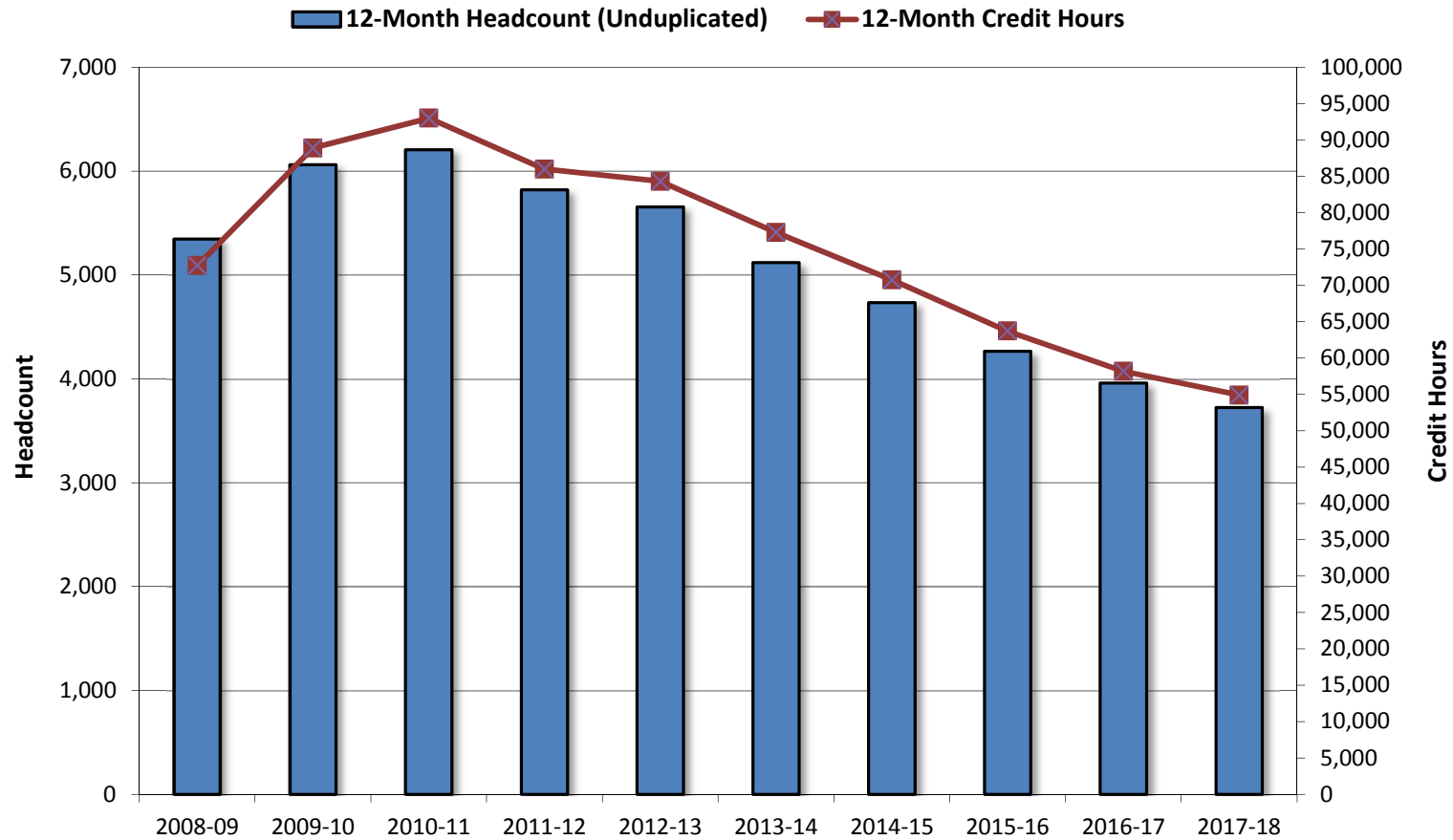


Source: IPEDS

\* July 1 - June 30

### 1.10 Twelve-Month\* Credit Hours & Full-Time Equivalent (FTE) Enrollment

	2008-09	2009-10	2010-11	2011-12	2012-13	2013-14	2014-15	2015-16	2016-17	2017-18	% Change	
											2008-09 to 2017-18	2016-17 to 2017-18
Credit Hours	72,729	88,883	93,012	85,988	84,312	77,298	70,756	63,721	58,187	54,916	-24.5%	-5.6%
FTE	2,260	2,424	2,963	2,866	2,810	2,577	2,359	2,124	1,940	1,831	-19.0%	-5.6%

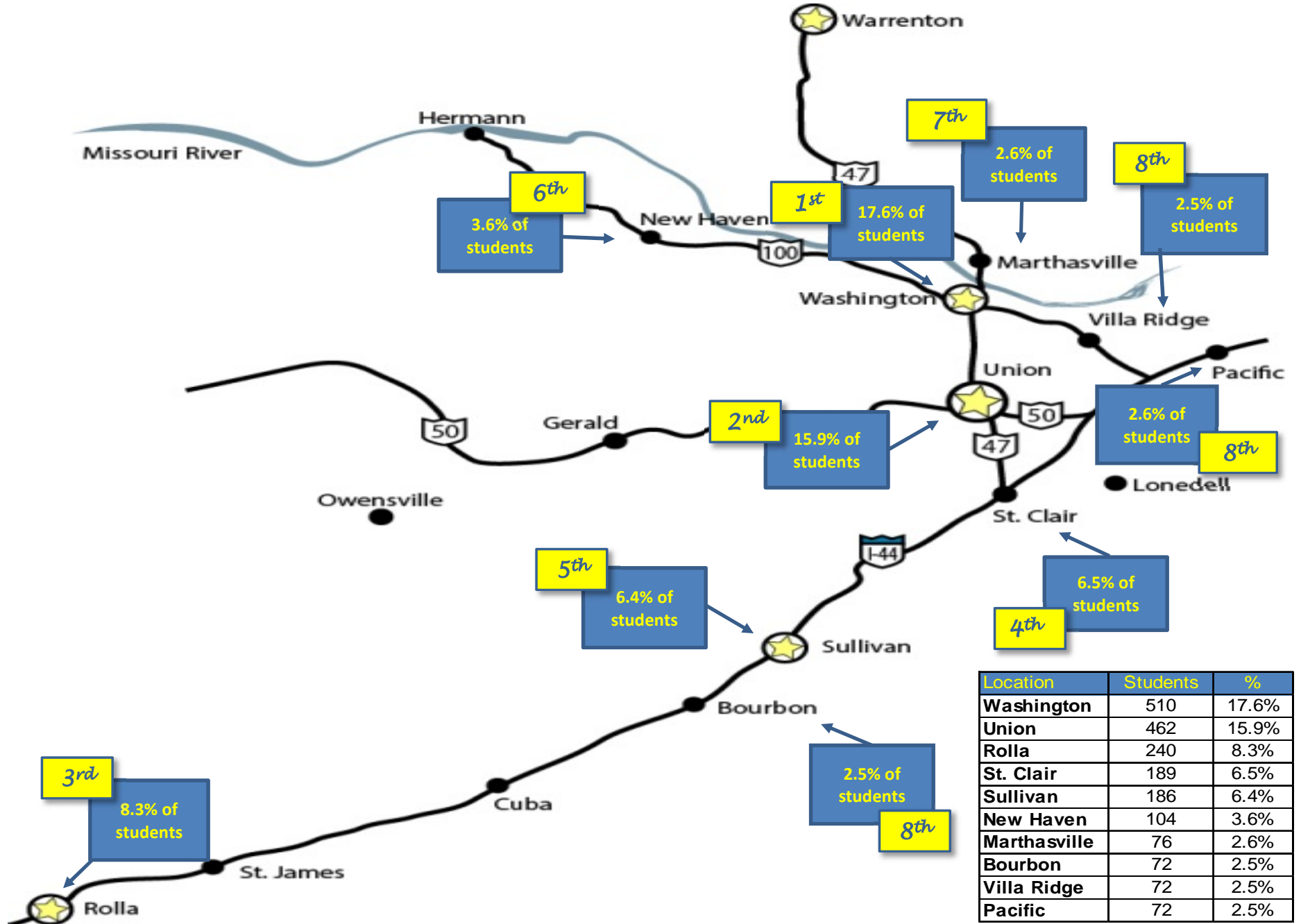


Source: IPEDS

\* July 1 - June 30

Note: FTE for twelve-month instructional activity = twelve-month credit hours/30

### 1.11 Fall 2017 Enrollment by Zip Code



Source: Colleague

Note: Percentages are based on total fall enrollment

### 1.12 Fall Enrollment by Day & Evening Students

	2008	2009	2010	2011	2012	2013	2014	2015	2016	2017	% Change	
											2008-2017	2016-2017
Total	3,591	4,203	4,471	4,127	4,043	3,899	3,606	3,222	2,966	2,897	-19.3%	-2.3%
<b>Course Time(s)</b>												
Day Only	2,108	2,461	2,679	2,347	2,292	2,376	2,340	1,931	1,860	1,468	-30.4%	-21.1%
Evening Only	503	461	437	430	451	420	325	341	221	222	-55.9%	0.5%
Day & Evening	980	1,281	1,355	1,350	1,300	1,103	941	950	885	1,207	23.2%	36.4%

