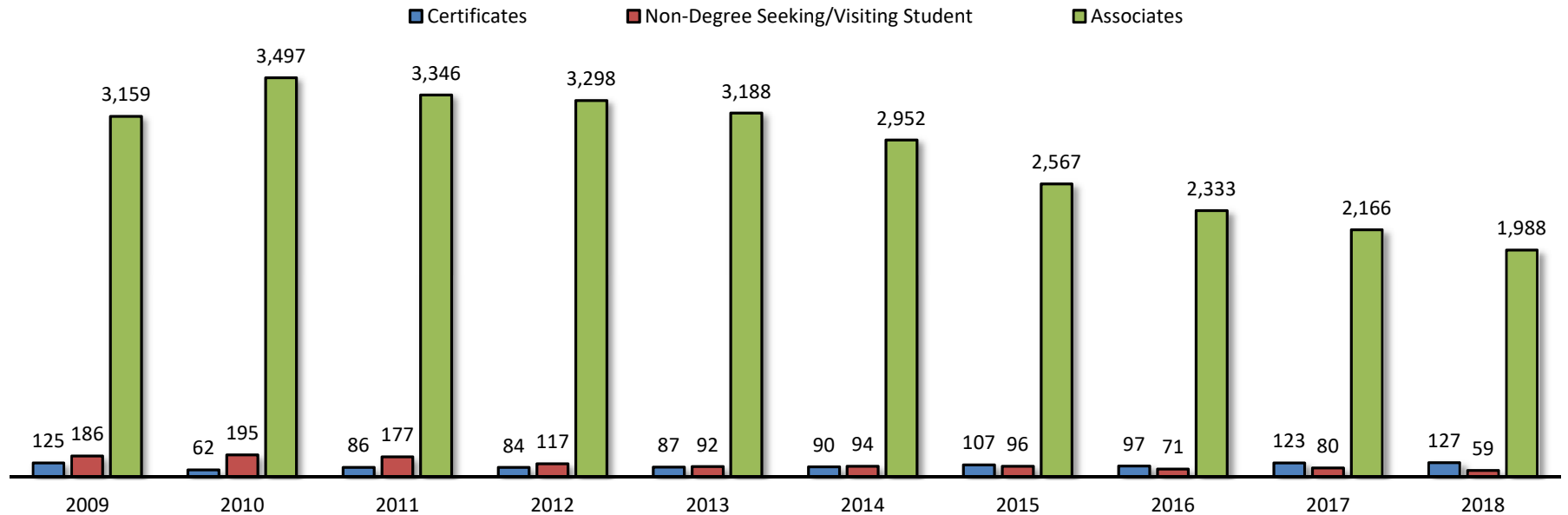

Section 5

Student Programs &
Course Enrollment

5.1 Fall Declared Degrees and Certificates

	2009	2010	2011**	2012	2013	2014	2015	2016	2017	2018	% Change	
											2009-2018	2017-2018
Total Declared Degrees*	3,470	3,754	3,609	3,499	3,367	3,136	2,770	2,501	2,369	2,174	-37.3%	-8.2%
Degree Type												
Certificate of Specialization	90	45	4	6	9	4	4	3	20	20	-77.8%	0.0%
Certificate of Achievement	35	17	82	78	78	86	103	94	103	107	205.7%	3.9%
Associate of Applied Science (AAS)	1,419	1,622	1,599	1,513	1,436	1,322	662	540	490	419	-70.5%	-14.5%
Associate of Arts (AA)	1,430	1,380	1,352	1,422	1,441	1,359	1,648	1,581	1,455	1,365	-4.5%	-6.2%
Associate of Arts in Teaching (AAT)	181	365	263	201	171	141	140	72	41	26	-85.6%	-36.6%
Associate of Fine Arts (AFA)	na	na	11	37	35	31	23	41	77	100	na	29.9%
Associate of Science (AS)	129	130	121	125	105	99	94	99	103	78	-39.5%	-24.3%
Non-Degree Seeking or Visiting Student	186	195	177	117	92	94	96	71	80	59	-68.3%	-26.3%



Source: Colleague

*Students may have more than one active declared degree (dual credit, dual technical credit, dual enrollment and unknown degree students not included).

**2011 was the first year for the new certificate model

5.2 Fall Course Enrollment by Academic Division

Career & Technical Education

												% Change		
Course Prefix	Description	2009	2010	2011	2012	2013	2014	2015	2016	2017	2018	Total Course Enrollment	2009-2018	2017-2018
ACC	Accounting	237	266	230	243	217	180	173	204	158	179	2,087	-24.5%	13.3%
AUT	Automotive Technology	49	72	59	47	50	54	55	25	44	21	476	-57.1%	-52.3%
BDC	Building Construction Technology	9	8	7	8	4	--	2	5	--	2	45	-77.8%	na
BMT	Business Management Technology	--	--	8	30	9	13	--	--	--	--	60	na	na
BT	Business Technology	255	291	170	92	18	1	--	--	--	--	827	na	na
BUS	Business	345	323	257	252	277	262	193	228	222	219	2,578	-36.5%	-1.4%
CIS	Computer Information Systems	440	507	492	466	465	436	369	296	216	180	3,867	-59.1%	-16.7%
CUL	Hospitality/Culinary Arts	219	147	224	151	120	146	140	104	94	92	1,437	-58.0%	-2.1%
DF	Drafting & Design	115	113	97	1	--	--	--	--	--	--	326	na	na
HIM	Health Information Management	--	14	63	213	211	214	166	103	104	123	1,211	na	18.3%
HVC	HVAC/R	188	215	163	178	114	157	160	156	131	140	1,602	-25.5%	6.9%
IND	Industrial Engineering Technology	104	91	58	66	122	107	93	92	154	159	1,046	52.9%	3.2%
PRS	Precision Machining	142	138	159	181	222	260	204	143	110	111	1,670	-21.8%	0.9%
WLD	Welding	49	49	62	79	66	66	44	78	69	60	622	22.4%	-13.0%
Total Course Enrollment in Career & Technical Education		2,152	2,234	2,049	2,007	1,895	1,896	1,599	1,434	1,302	1,286	17,854	-40.2%	-1.2%

Humanities & Fine Arts

												% Change		
Course Prefix	Description	2009	2010	2011	2012	2013	2014	2015	2016	2017	2018	Total Course Enrollment	2009-2018	2017-2018
ART	Art	375	375	388	456	413	347	293	257	270	299	3,473	-20.3%	10.7%
CIV	Civilization	111	71	86	46	84	82	74	64	62	18	698	-83.8%	-71.0%
COM	Communications	652	670	692	669	616	633	515	416	323	374	5,560	-42.6%	15.8%
DES	Design	--	--	--	--	--	--	76	70	50	--	196	na	na
ENG	English	1,955	2,184	1,851	1,715	1,649	1,527	1,255	1,155	1,020	929	15,240	-52.5%	-8.9%
FL	Foreign Language (all languages)	159	133	149	103	83	62	73	46	59	57	924	-64.2%	-3.4%
GDN	Graphic Design	177	192	170	154	114	90	16	12	13	--	938	na	na
JR	Journalism	14	6	11	26	18	14	32	24	--	--	145	na	na
MCM	Mass Media Communication	--	--	--	--	--	--	--	--	48	52	100	na	8.3%
MMD	Multimedia Design	--	--	--	--	--	--	7	23	18	--	48	na	na
MUS	Music	442	537	621	539	414	437	415	394	413	364	4,576	-17.6%	-11.9%
THE	Theater	--	--	--	--	--	--	--	68	95	67	230	na	-29.5%
Total Course Enrollment in English, FL & Philosophy		3,885	4,168	3,968	3,708	3,391	3,192	2,756	2,529	2,371	2,160	32,128	-44.4%	-8.9%

5.2 Fall Course Enrollment by Academic Division (cont'd)

Math, Science & Engineering

												% Change		
Course		2009	2010	2011	2012	2013	2014	2015	2016	2017	2018	Total Course Enrollment	2009-2018	2017-2018
Prefix	Description													
AGR	Agriculture	--	--	--	--	--	--	--	18	15	11	44	na	-26.7%
BIO	Biology	1,262	900	919	505	493	524	540	447	487	456	6,533	-63.9%	-6.4%
BIT	Biotechnology	14	7	--	14	4	6	2	--	--	--	47	na	na
CHM	Chemistry	298	400	420	210	159	123	136	133	95	84	2,058	-71.8%	-11.6%
CHT	Chemical Technology	--	--	1	3	1	--	--	--	--	--	5	na	na
EGR	Pre-Engineering	89	59	72	78	66	65	44	52	68	48	641	-46.1%	-29.4%
EVR	Environmental Science	91	134	90	91	99	48	65	72	42	24	756	-73.6%	-42.9%
GEO	Geology	81	46	59	46	83	64	72	76	111	121	759	49.4%	9.0%
MTH	Mathematics	1,508	1,910	1,851	1,816	1,783	1,586	1,382	1,180	1,034	892	14,942	-40.8%	-13.7%
PHY	Physics/Physical Science	98	58	69	70	76	38	56	81	113	116	775	18.4%	2.7%
Total Course Enrollment in Math, Science & Engineering		3,441	3,514	3,481	2,833	2,764	2,454	2,297	2,059	1,965	1,752	26,560	-49.1%	-10.8%

Nursing & Allied Health

												% Change		
Course		2009	2010	2011	2012	2013	2014	2015	2016	2017	2018	Total Course Enrollment	2009-2018	2017-2018
Prefix	Description													
EMS	Emergency Medical Technology/Paramedic	263	339	300	263	247	271	301	227	170	253	2,634	-3.8%	48.8%
FST	Fire Technology	51	46	39	60	40	21	23	10	5	--	295	na	na
HSC	Health Science	--	281	292	288	219	204	119	116	114	101	1,734	na	-11.4%
MDA	Medical Assistant	--	--	--	--	52	88	92	87	78	34	431	na	-56.4%
NUR	Nursing	227	226	227	240	234	267	226	232	209	227	2,315	0.0%	8.6%
OTA	Occupational Therapy Assistant	--	6	14	28	12	8	14	8	8	14	112	na	75.0%
RAD	Radiologic Technology	32	84	120	143	132	160	144	--	89	73	977	128.1%	-18.0%
RC	Respiratory Care	133	117	114	136	92	84	48	--	--	--	724	na	na
Total Course Enrollment in Nursing & Allied Health		706	1,099	1,106	1,158	1,028	1,103	967	680	673	702	9,222	-0.6%	4.3%

5.2 Fall Course Enrollment by Academic Division (cont'd)

Social Sciences

												% Change		
Course												Total Course Enrollment	2009-2018	2017-2018
Prefix	Description	2009	2010	2011	2012	2013	2014	2015	2016	2017	2018			
ANT	Anthropology	27	22	19	18	22	17	24	25	23	22	219	-18.5%	-4.3%
CRJ	Criminal Justice	169	165	103	68	52	39	31	37	40	12	716	-92.9%	-70.0%
ECO	Economics	156	132	128	126	118	133	126	106	110	97	1,232	-37.8%	-11.8%
EDU	Education	270	352	265	238	124	138	139	165	176	112	1,979	-58.5%	-36.4%
GRY	Geography	57	48	25	14	--	--	--	--	--	--	144	na	na
HST	History	294	342	353	333	359	299	251	314	323	286	3,154	-2.7%	-11.5%
PED	Physical Education	642	702	625	625	551	489	332	135	68	99	4,268	-84.6%	45.6%
PHL	Philosophy	154	193	181	204	211	137	130	103	99	124	1,536	-19.5%	25.3%
PSC	Political Science	243	311	157	140	148	143	135	109	109	145	1,640	-40.3%	33.0%
PSY	Psychology	551	639	526	572	641	591	631	494	459	517	5,621	-6.2%	12.6%
REL	Religion	--	--	--	--	--	--	--	85	43	39	167	na	-9.3%
SOC	Sociology	386	428	304	343	380	289	240	306	399	304	3,379	-21.2%	-23.8%
Total Course Enrollment in Social Sciences		2,949	3,334	2,686	2,681	2,606	2,275	2,039	1,879	1,849	1,757	24,055	-40.4%	-5.0%

Student Success

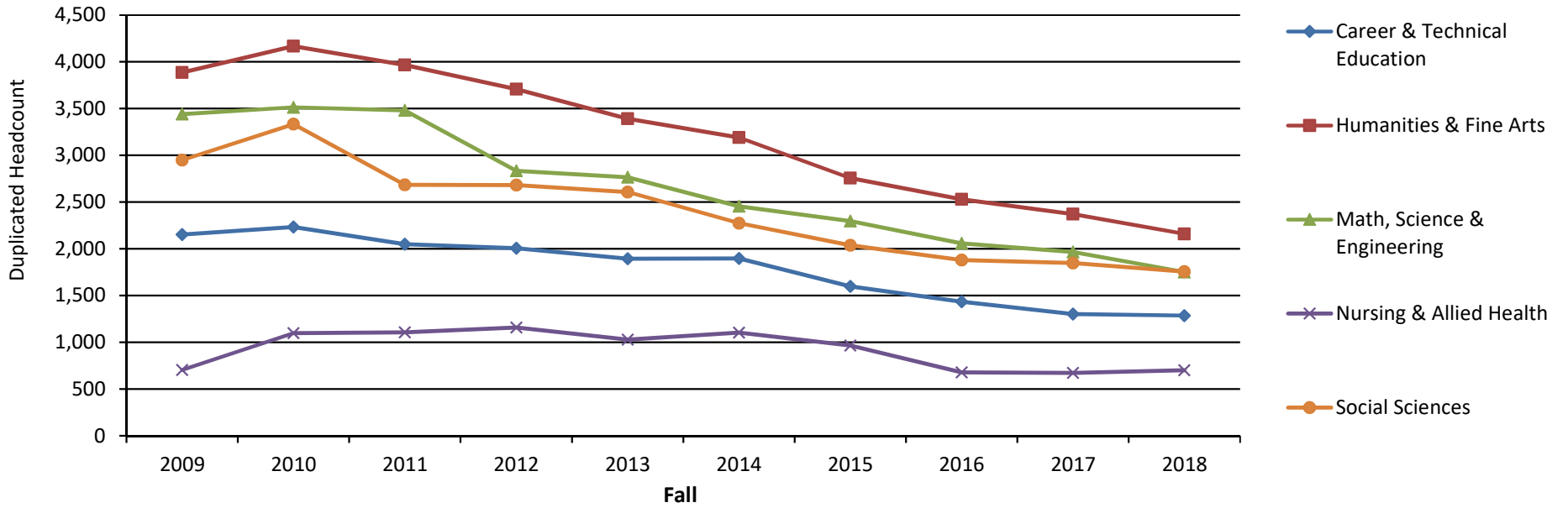
												% Change		
Prefix	Description	2009	2010	2011	2012	2013	2014	2015	2016	2017	2018	Course	2009-2018	2017-2018
COL	Freshmen Studies	955	1,000	972	906	800	765	734	641	613	625	8,011	-34.6%	2.0%

Source: Colleague Fall Census

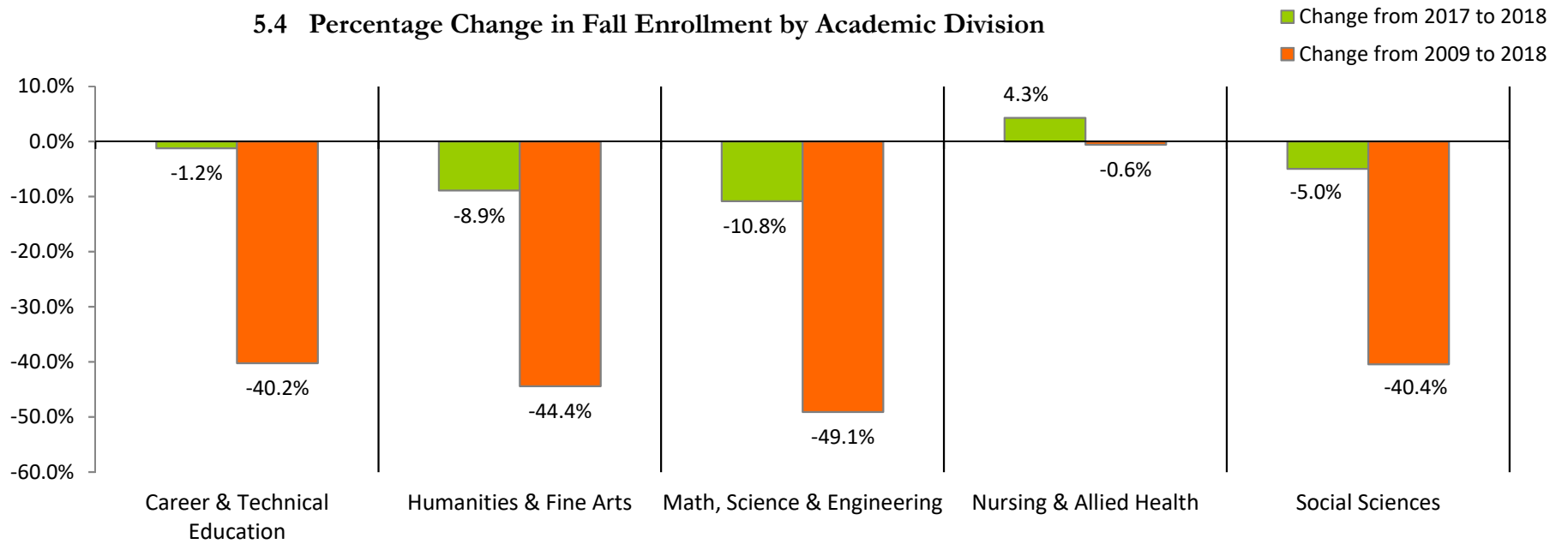
Note: enrollment figures are duplicated student headcounts

NOTE: Am Sign Language was a 'CT' course type until 07/FA. It is now has an 'AS' course prefix.

5.3 Fall Enrollment Trend by Academic Division



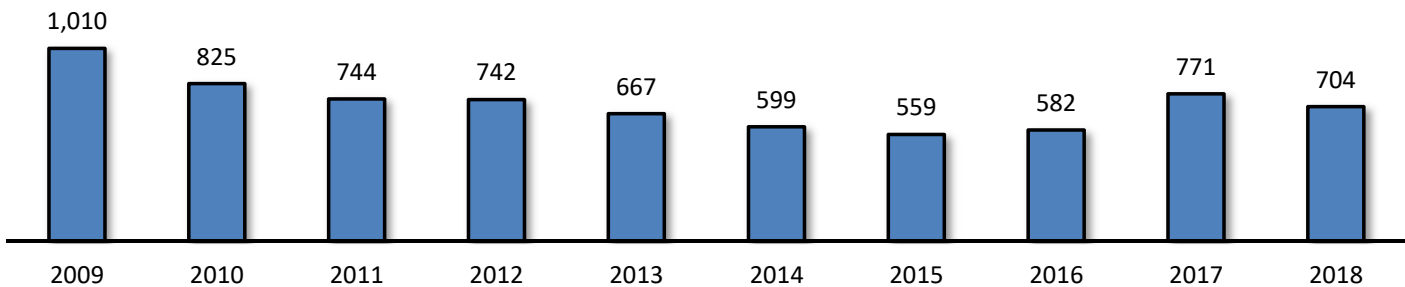
5.4 Percentage Change in Fall Enrollment by Academic Division



5.5 Fall Dual Credit Course Enrollment

Course Prefix Description		2009 2010 2011 2012 2013 2014 2015 2016 2017 2018										% Change		
												Total Course Enrollment	2009-2018	2017-2018
ACC	Accounting	--	--	--	--	--	--	--	3	10	7	20	na	-30.0%
ART	Art	38	16	--	--	--	--	--	--	--	3	57	-92.1%	na
AUT	Automotive Technology	102	138	138	108	72	86	42	47	45	26	804	-74.5%	-42.2%
BDC	Technology	31	29	23	25	19	12	7	14	10	10	180	-67.7%	0.0%
BIO	Biology	46	40	24	9	9	39	6	3	8	20	204	-56.5%	150.0%
BMT	Business Technology	49	38	39	23	13	--	--	--	--	--	162	na	na
BUS	Business	17	10	10	7	--	6	--	--	70	69	189	305.9%	-1.4%
BIT	Biotechnology	--	--	--	--	--	--	--	7	--	--	7	na	na
CIS	Computer Information Systems	11	39	14	17	7	6	11	3	7	11	126	0.0%	57.1%
CIV	Civilization	--	4	--	--	--	--	--	7	10	--	21	na	na
COM	Communication	79	99	95	117	120	62	59	82	66	44	823	-44.3%	-33.3%
CUL	Culinary	--	6	--	--	--	--	--	--	--	--	6	na	na
DF	Drafting & Design	9	12	16	3	--	--	--	--	--	--	40	na	na
EDU	Education	9	--	--	--	--	21	12	--	16	16	74	77.8%	0.0%
EMS	EMT/Paramedic	--	--	--	--	--	--	--	--	--	--	0	na	na
ENG	English	62	45	49	37	35	88	86	120	99	102	723	64.5%	3.0%
GDN	Graphic Design	57	24	--	--	--	--	--	--	--	--	81	na	na
GEO	Geology	20	14	26	22	16	24	16	--	--	--	138	na	na
HST	History	138	117	122	150	159	114	104	45	84	51	1,084	-63.0%	-39.3%
HSC	Health Science	--	--	--	--	--	--	2	--	2	--	4	na	na
HVC	HVAC/R	--	--	--	--	--	--	--	--	--	--	0	na	na
MTH	Mathematics	160	57	57	74	46	49	56	58	131	127	815	-20.6%	-3.1%
MUS	Music	--	--	--	--	--	--	--	1	1	8	10	na	700.0%
PED	Physical Education	7	--	--	--	--	--	--	--	--	--	7	na	na
PRS	Precision Machining	38	38	40	48	34	27	46	48	60	54	433	42.1%	-10.0%
PSC	Political Science	--	--	--	--	--	--	--	--	3	--	3	na	na
PSY	Psychology	16	18	39	36	67	--	44	86	91	75	472	368.8%	-17.6%
REL	Religion	--	--	--	--	--	--	--	--	--	25	25	na	na
SOC	Sociology	57	41	13	38	53	43	--	1	--	20	266	-64.9%	na
WLD	Welding	64	40	39	28	17	22	68	57	58	36	429	-43.8%	-37.9%
Total Course Enrollment		1,010	825	744	742	667	599	559	582	771	704	7,203	-30.3%	-8.7%

■ Total Course Enrollment



Source: Colleague Fall Census

Notes:

(1) Enrollment figures are duplicated student headcounts