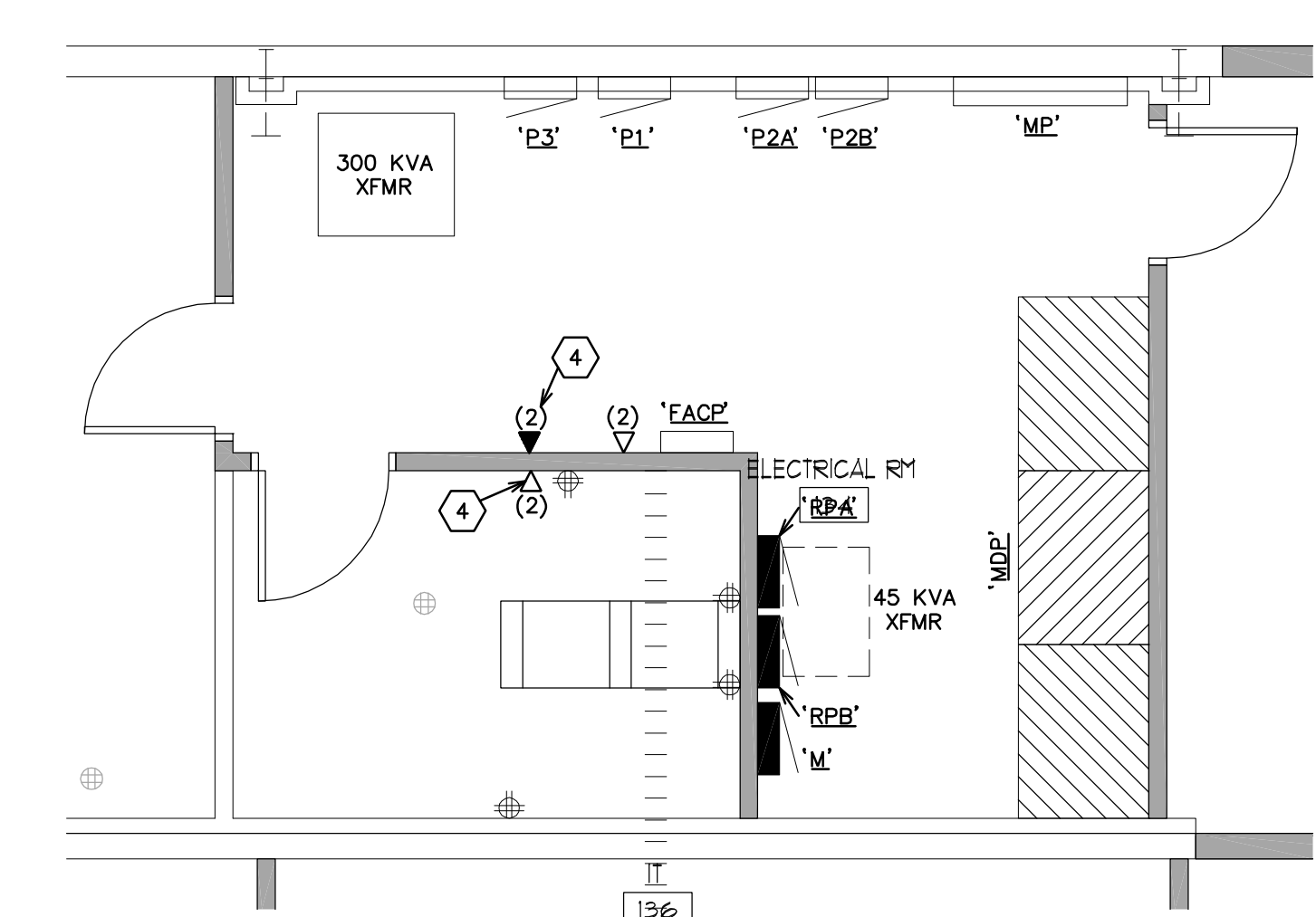


**1 DATA PLAN**  
E1.1 1/8" = 1'-0"



**2 PARTIAL PLAN - IT ROOM**  
E1.1 1/4" = 1'-0"

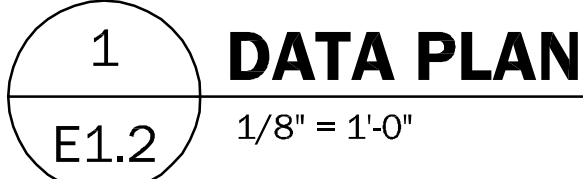
**ALL RECEPTACLES SHOWN WITH A "THIN" LINE WEIGHT ARE UNDER SEPARATE CONTRACT. THIS INCLUDES POWER WIRING.**

**ALL DATA OUTLET S SHOWN WITH A "THIN" LINE WEIGHT ARE ROUGH-INS ONLY UNDER A SEPARATE CONTRACT. JACKS, FACEPLATES AND WIRING ARE BY THIS CONTRACTOR.**

**ALL RECEPTACLES AND DATA OUTLETS SHOWN WITH A "THICK" LINE WEIGHT SHALL BE UNDER THIS CONTRACT. THIS INCLUDES ANY NEW RECEPTACLES POWER WIRING.**

**ALL DATA OUTLETS SHOWN WITH A "THICK" LINE WEIGHT SHALL BE UNDER THIS CONTRACT. THIS INCLUDES ROUGH-INS, JACKS, FACEPLATES AND CABLING.**

- MATERIALS:**
- FACEPLATES:
- SIEMON 12 PORT IVORY: 42080-12I
  - SIEMON 6 PORT IVORY: 42080-6IS
  - SIEMON 4 PORT IVORY: 42080-4IS
  - PANDUIT PHONE FACE PLATE WITH MODULE: KWP6PY
- KEYSTONES:
- SIEMON BLACK: MX6-K01
  - SIEMON BLUE: MX6-K07
  - SIEMON BLACK SHIELDED: Z6-01
  - SIEMON BLUE SHIELDED: Z6-07
- MOUNTING OPTIONS:
- PANDUIT J-PRO CABLE SUPPORT SYSTEM: JP131SBC87R-L20 - SCREW-ON BEAM CLAMP FOR USE WITH FLANGES UP TO 3/4" THICK. ROTATES 360 DEGREES.
- IDF:
- PANDUIT VERTICAL MANAGER: PRV8
  - PANDUIT PATCH RUNNER DOORS: PRD6 (X2 PER PANDUIT VERTICAL MANAGER)
  - PANDUIT 3" CHANNEL RACK: R2P
  - PANDUIT PATCH RUNNER HIGH CAPACITY HORIZONTAL CABLE MANAGER: PEHF2
  - SIEMON Z-MAX 6 UTP PATCH PANELS: Z6-PNL(X)-U48K
- CAT 6 CABLE
- SIEMON SYSTEM 6 UTP CABLE - PLENUM: 9C6P4-E3-05-RXA (YELLOW)
  - SIEMON SYSTEM 6 UTP CABLE - PLENUM: 9C6P4-E3-06-RXA (BLUE)
  - SIEMON SYSTEM 6 UTP CABLE - PLENUM: 9C6P4-E3-02-RXA (WHITE)
  - SIEMON PREMIUM 5e F/UTP CABLE: 9ASL4-E2 (VIOLET)
- CABLE TRAY
- LADDER RACK FOR IDF
  - CABLE TRAY FOR BUILDING LENTH TO BE FIELD VERIFIED.
- PROJECTOR CEILING PLATE: CHIEF CMS445
- PAIR 6 1/2" CEILING SPEAKERS, 2-WAY, 60W: MONOPRICE 4103
- PAIR 6 1/2" SPEAKER MOUNTING KIT: MONOPRICE 6032
- AUDIO CABLE:
- KEYED ELECTRICAL NOTES:**
- 1 - NOT USED -
  - 2 EXTERIOR CCTV IP CAMERA (2) YELLOW CAT 6 PER CAMERA
  - 3 FURNISH INSTALL AND TERMINATE TWO CAT 6 YELLOW DATA CABLES WITH BLACK KEYSTONE IN CEILING FOR ACCESS POINT. LEAVE SIX FOOT COIL SECURED TO J-HOOK ATTACHED TO NEAREST STEEL BAR JOIST. RUN TO ROOM 136 AND TERMINATE INTO APPROPRIATE PORT ON DATA PATCH PANEL.
  - 4 FURNISH INSTALL AND TERMINATE TWO CAT 6 WHITE DATA CABLES OF EQUAL LENGTH FOR VOIP TELEPHONE IN WALL 60 INCHES FROM FLOOR CENTERED IN PHONE FACE PLATE WITH MODULE. TERMINATE ONE OF THE CABLES. LEAVE THE SECOND TERMINATED CABLE COILED ABOVE CEILING SECURED TO J HOOK ATTACHED TO NEAREST STEEL BAR JOIST. RUN TO ROOM 136 AND TERMINAL INTO APPROPRIATE PORT ON VOICE PATCH PANEL.
  - 5 FURNISH INSTALL AND TERMINATE TWO CAT 6 YELLOW DATA CABLES WITH BLACK KEYSTONE RUN TO ROOM 138 AND TERMINATE INTO APPROPRIATE PORT ON DATA PATCH PANEL. FURNISH INSTALL AND TERMINATE FOUR CAT 6 BLUE DATA CABLES WITH BLUE KEYSTONE TO NOTE 1 OR 2 IN DESIGNATED IN ROOM. FURNISH INSTALL AND TERMINATE ONE CAT 6 BLUE CABLE AND BLUE KEYSTONE TO NOTE 5 DESIGNATED IN ROOM. FURNISH INSTALL AND TERMINATE TWO 16 GAUGE 2 WAY AUDIO CABLE WITH BANANA CLIPS TO NOTE 7 DESIGNATED IN ROOM. INSTALL ALL KEYSTONES AND AUDIO CABLES IN A 12 PORT DUPLEX FACE PLATE.
  - 6 FURNISH INSTALL AND TERMINATE ONE CAT 6 BLUE DATA CABLE FROM NOTE 4 WITH RJ45 MALE CAT 6 CONNECTOR. THE CABLE NEEDS TO BE 87 INCHES FROM THE FLOOR CENTER ON LOW VOLTAGE FACE PLATE AND 36 INCHES TO THE LEFT OF CENTER ON THE WHITE BOARD. COORDINATE HEIGHT AND LOCATION WITH OWNER PRIOR TO INSTALL.
  - 7 FURNISH AND INSTALL ONE 16 GAUGE 2 WAY AUDIO CABLE FROM NOTE 5 WITH SIX FOOT COIL SECURED TO J HOOK ATTACHED TO NEAREST STEEL BAR JOIST. FURNISH AND INSTALL 6 1/2" INCH SPEAKERS AND SPEAKER MOUNTING KITS.
  - 8 FURNISH INSTALL AND TERMINATE CAT 6 SHIELDED CABLE WITH BLACK SHIELDED KEYSTONE. RUN TO ROOM 136 AND TERMINATE INTO APPROPRIATE PORT ON SHIELDED DATA PATCH PANEL.
  - 9 CCTV IP CAMERA (2) YELLOW CAT 6 PER CAMERA.
  - 10 CABLE TRAY. FIELD COORDINATE ACTUAL ROUTING WITH MECHANICAL DUCTWORK AND PIPING. MAINTAIN INTEGRITY OF ALL FIRE WALL PENETRATIONS.



ALL DATA OUTLETS SHOWN WITH A "THICK" LINE WEIGHT SHALL BE UNDER THIS CONTRACT. THIS INCLUDES ROUGH-INS, JACKS, FACEPLATES AND CABLING.

AUDIO CABLE: