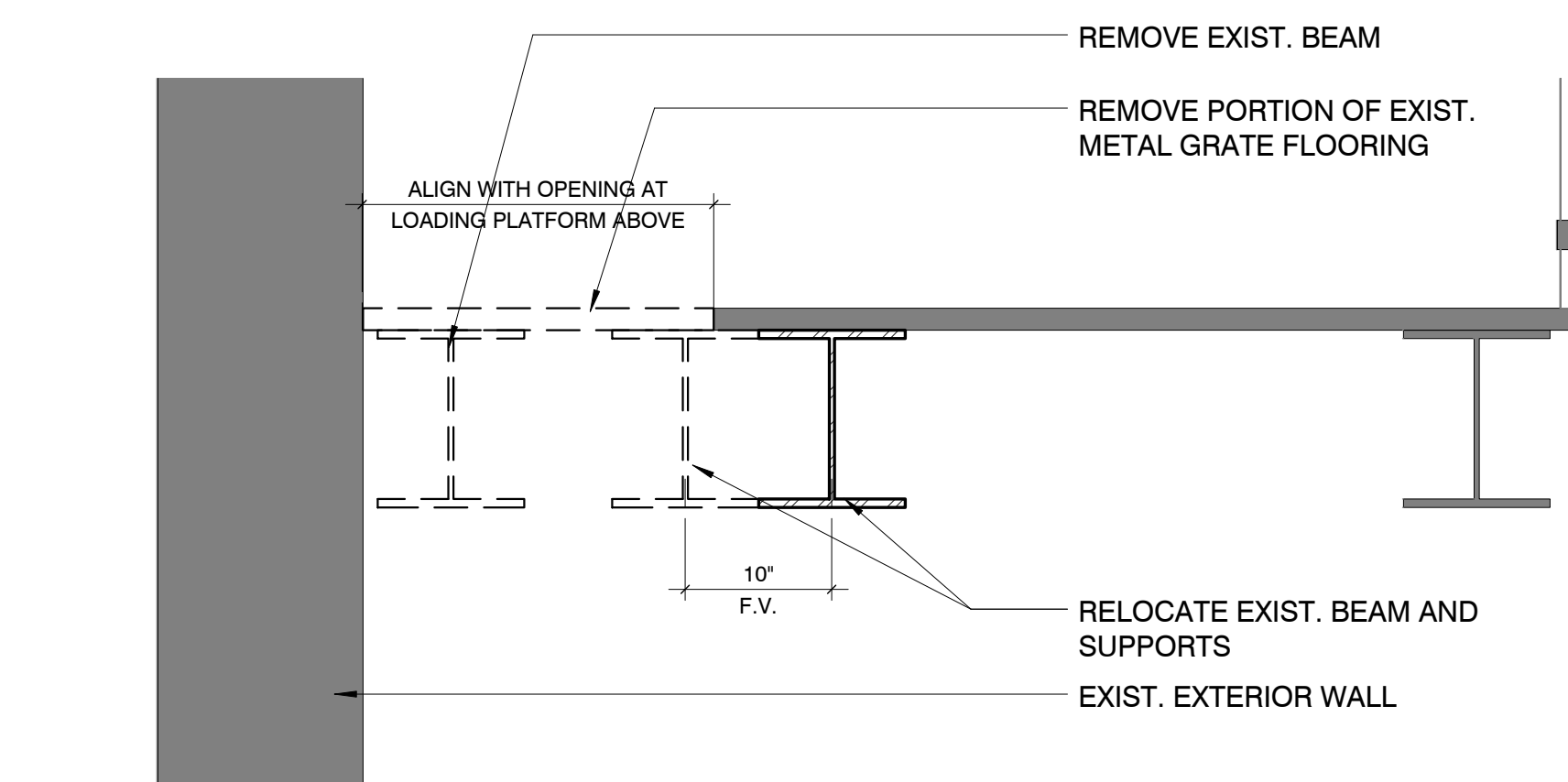


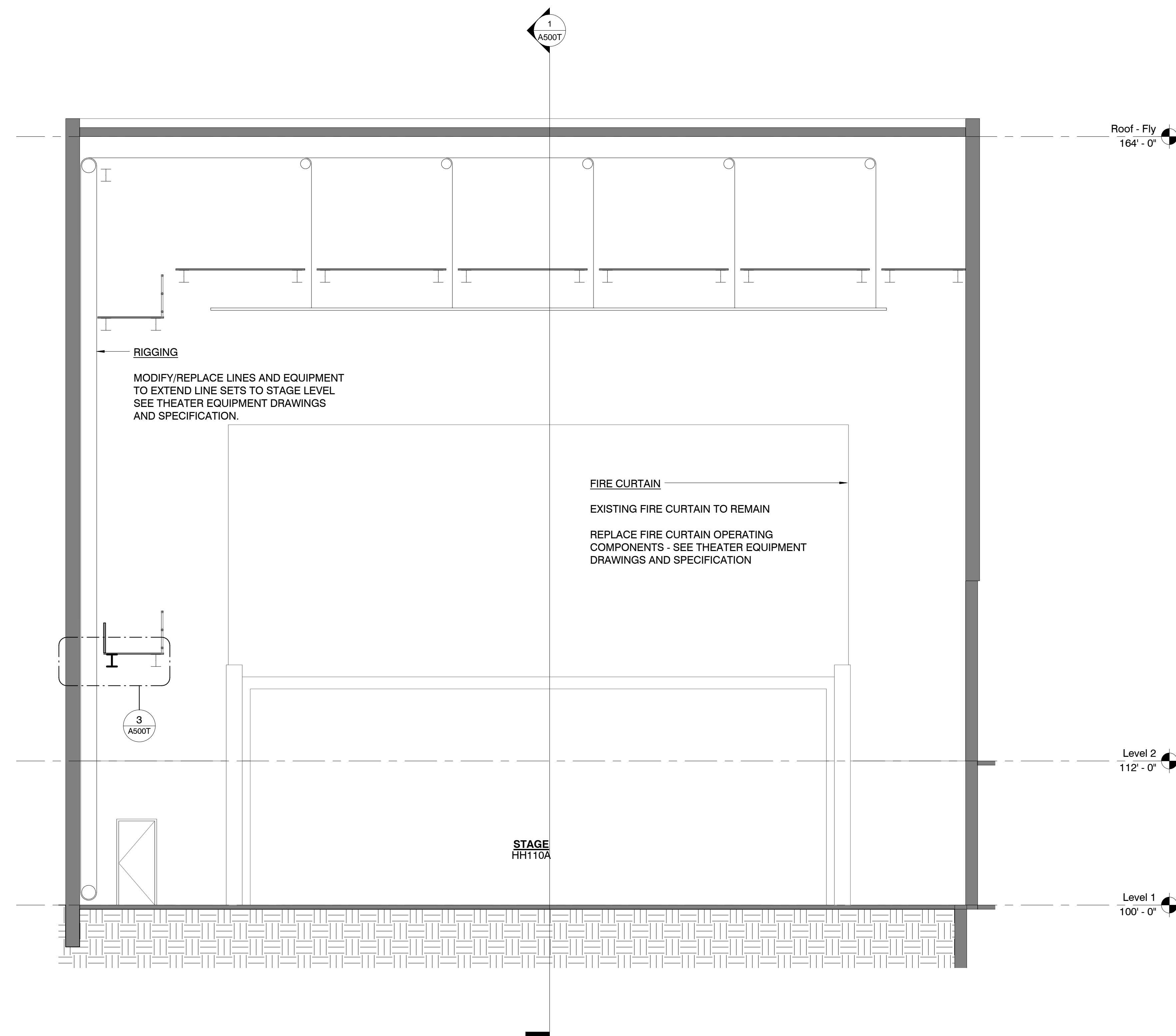
A101T	3/16" = 1'-0"
-------	---------------

A101T	1/64" = 1'-0"
-------	---------------



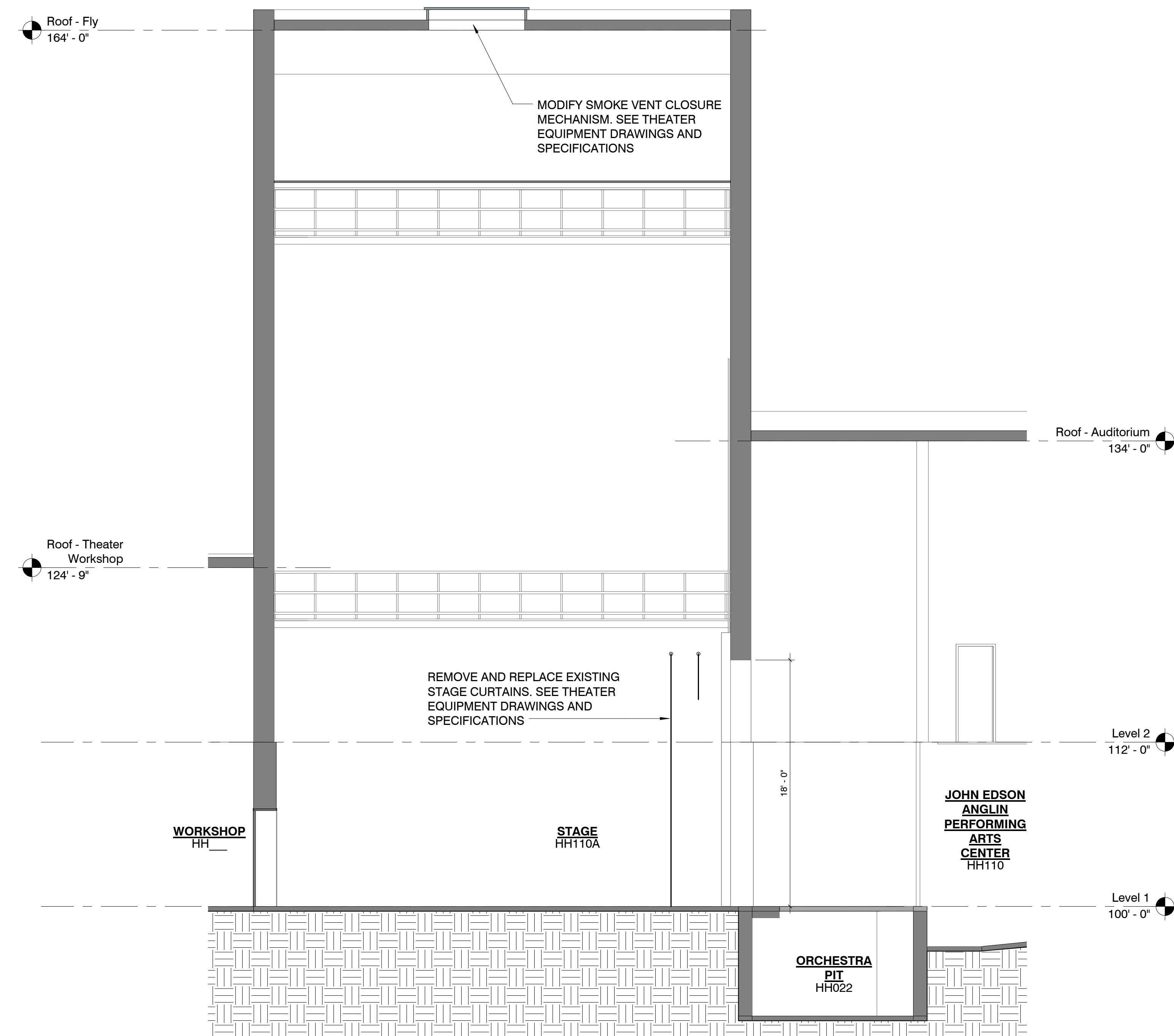
### 3 Detail - Operating Platform

A500T	$1^{\circ} = 1^{\circ} \cdot 0^{\circ}$
-------	---



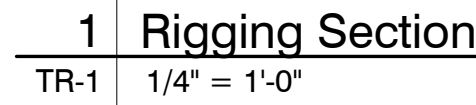
2	Elevation - Proscenium - Stage Side
---	-------------------------------------

A500T	3/16" = 1'-0"
-------	---------------



1 | Section - Stage

A500T	3/16" = 1'-0"
-------	---------------



- Notes**

  - (A) 12" HEADBLOCK. 7 line typical. Additional lines for Electrics as required.
  - (B) TOP STOP. 1-1/2" X 1-1/2" 10Ga angle iron with 2" X 2" hardwood & neoprene pad.
  - (C) FRONT LOADING ARBOR WITH INTEGRATED TRAP. 800lb cap./ Electrics 1500lb cap.
  - (D) Arrange top stop to bottom of arbor is at approximate bottom edge of loading bridge. Load all pipe weight in least accessible shelf and mark with yellow divider.
  - (E) WALL BATTEN & KNEE BRACE. Secure to wall channel every 5' o.c horizontally & vertically..
  - (F) T-BAR. 1-1/2" X 1-1/2". Aluminum with integral C-channel on back side.
  - (G) ROPE LOCK. Adjust rope lock to hold exactly 50 lbs on balance.
  - (H) 3/4" PURCHASE LINE. Allow arbor weight to hang on purchase line for not less than 24 hours to remove construction stretch. Then retie so tension block is near top of travel.
  - (I) BOTTOM STOP. Same as Top Stop. Adjust for maximum travel, but so wire rope termination on batten side does not enter into lift well.
  - (J) 10" TENSION BLOCK.
  - (K) LOCK RAIL. Apx. 30" high. Pre-Drill for Rope Locks on 8" centers to perfectly align with T-bar. Securely attach to operating rail for 2000lb upward or downward force concentrated within an 8" area.
  - (L) MULTILINE LOFT BLOCKS. All grooves must be load bearing. Pickup cables must drop in the center of each loft well.
  - (M) WIRE ROPE. 1/4" diameter 7 X 19 galvanized aircraft cable. US origin or Korea origin with US test data only.
  - (N) BATTEN. 1-1/2" ID sch 40 double 62" typical. Black textured powder coat and marked per specification.
  - (O) TURNBUCKLE.  $\frac{3}{8}$ " x 6" jaw-jaw type. Terminate wire rope so turnbuckle is in apex mid position. Secure per specification.
  - (P) COMPRESSION FITTING. Clamp in accordance with specification. Thimble to be secure, but not bound by compressed sleeve. Secure end of wire rope with epoxy.
  - (Q) BATTEN CLAMP. 680lb cap. batten clamp. Track pipe clamps not to be used for batten connection.
  - (R) BAT. Mount to head beam using pre-engineered (Unistrut) channel and fittings. Channel & fitting load capacity to match arbor.
  - (S) BAT RELEASE HANDLE. Mount to release cable at convenient height.
  - (T) BAT RELEASE CABLE GUIDE. Mount spring tension guide adjacent to rope lock.
  - (V) All load bearing hardware to be from a US manufacturer, load rated and, used in a manner consistent with it's labeling & intended purpose, and must have an indelible manufacturer's mark.

This drawing and details on it are the sole property of the architect and may be used for this specific project only. It shall not be loaned, copied or reproduced, in whole or part, or for any other purpose or project without the written consent of the architect.

Sheet Title:

Project Number: 14434  
Sheet Number: TR-1  
Drawn By: \_\_\_\_\_  
Author: \_\_\_\_\_  
Issue Date: 4.25.2016



This drawing and details on it are the sole property of the architect and may be used for this specific project only. It shall not be loaned, copied or reproduced, in whole or part, or for any other purpose or project without the written consent of the architect.

Sheet Title:

Project Number: 14434  
 Drawn By:  
 Author  
 Issue Date: 4.25.2016

Sheet Number:  
**TR-2**

Office: 319 N.4th Street  
Suite 1000  
St.Louis, MO.63101  
p 314-231-5700  
f 314-231-0816

Structural Engineer  
KPF Consulting Engineers  
1610 Des Peres Rd, Suite 100  
St. Louis, MO 63131  
314-835-0524  
314-835-0749

MEPF Engineer BRIC Partnership, LLC  
100 East Washington Street, Ste 220  
Belleville, IL 62220  
314-725-5889  
618-277-5227

Professional Seal

Project Title:

PROJECT DESCRIPTION
ECC Campus Improvement & Renovation Hansen Hall Theater Modifications

1964 Prairie Dell Rd. Union, MO. 63084

## PROJECT DESCRIPTION

The Professional Architect's seal affixed to this sheet applies only to the material and items shown on this sheet. All drawings, instruments or other documents not exhibiting this seal shall not be considered prepared by this architect, and this architect expressly disclaims any and all responsibility for such plans, drawings or documents not exhibiting this seal.

This drawing and details on it are the sole property of the architect and may be used for this specific project only. I shall not be loaned, copied or reproduced, in whole or part, or for any other purpose or project without the written consent of the architect.

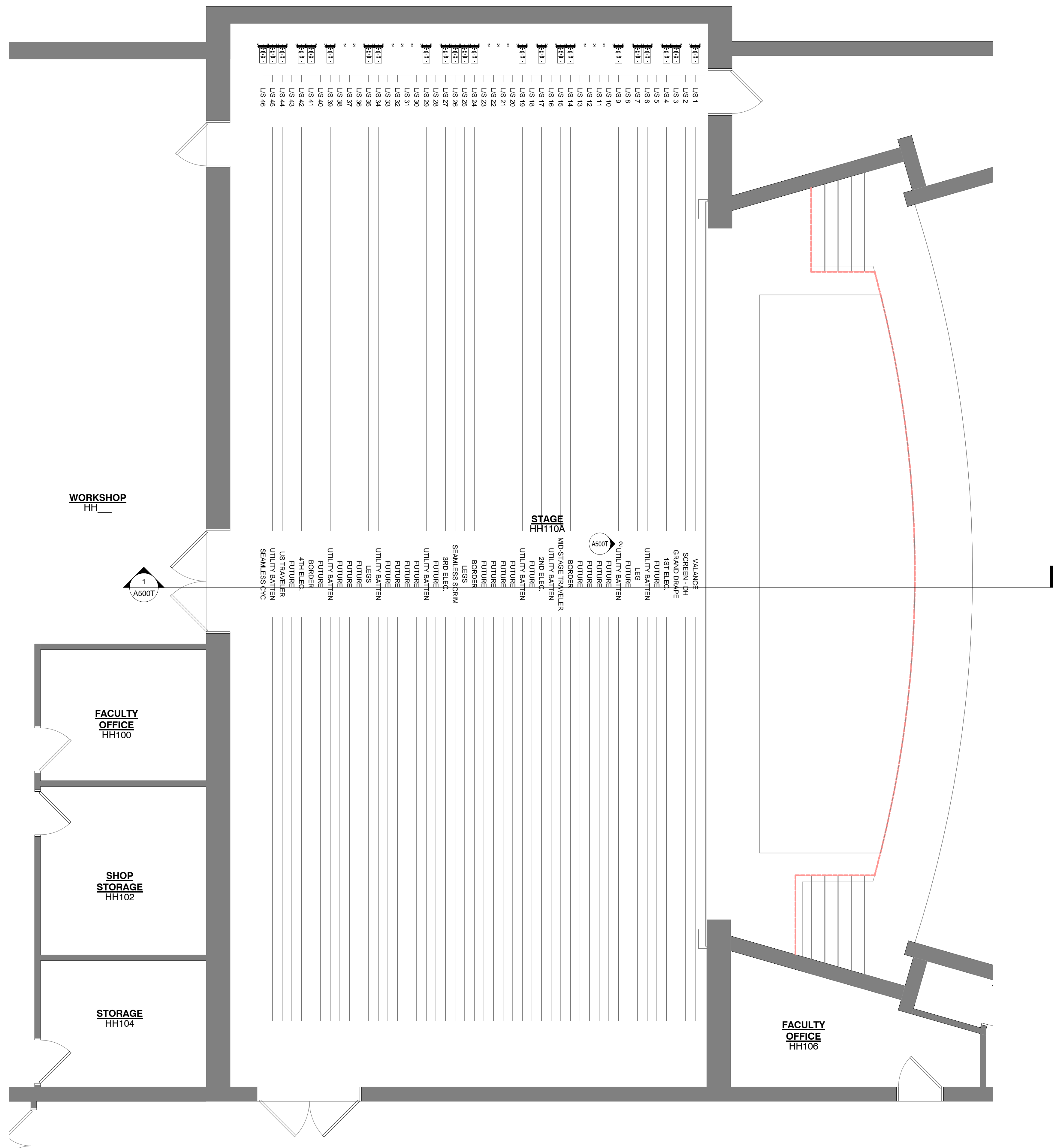
Sheet Title:

Project Number: 14434  
 Drawn By:  
 Author:  
 Issue Date: 4.25.2016

Sheet Number:  
**TR-3**

4/26/2016 3:01:07 PM C:\Users\jshearer\Documents\14434\_Hansen Hall\_v16\_Arch\_Wksh\_jshearer.nt

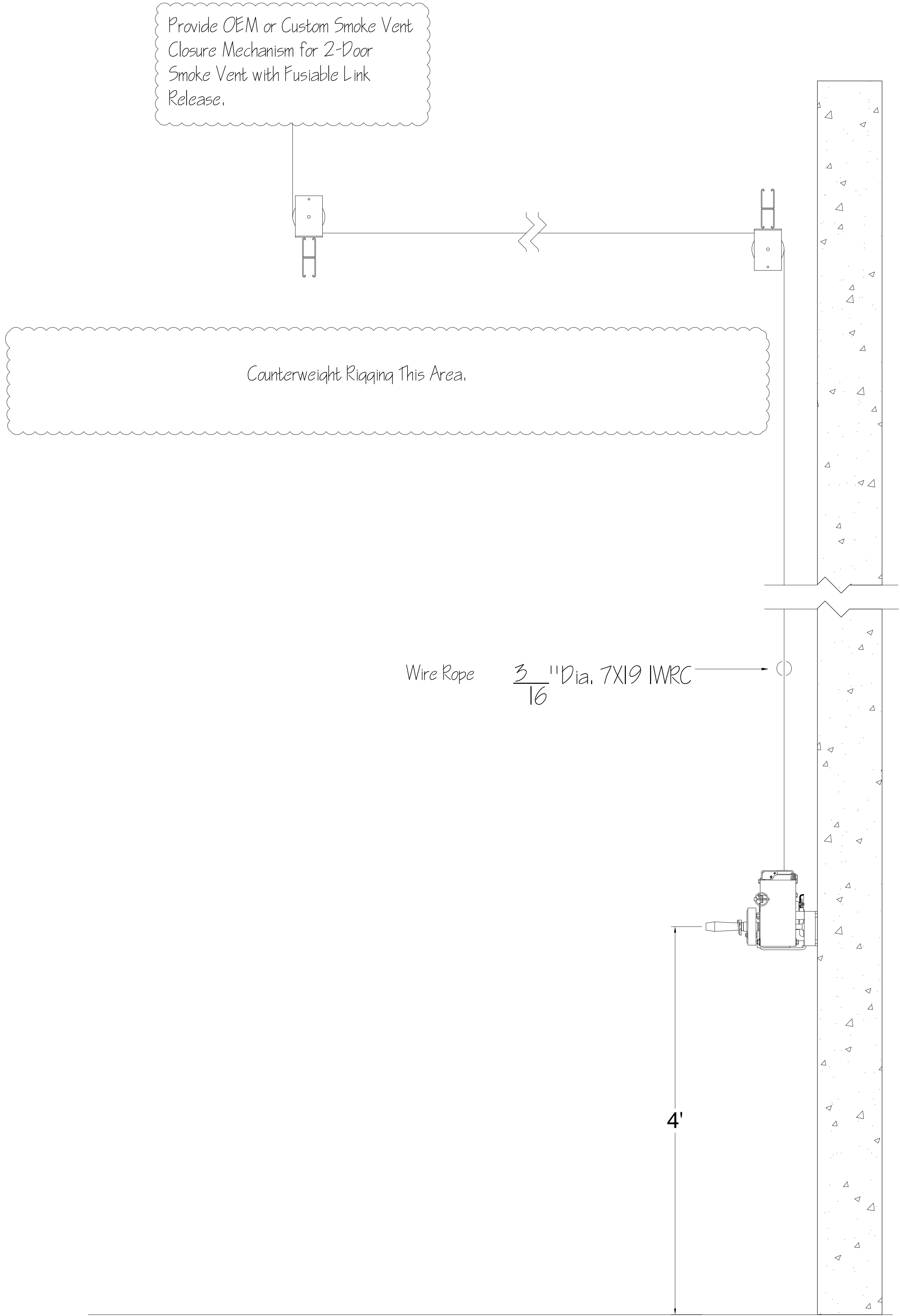
LGA2.5



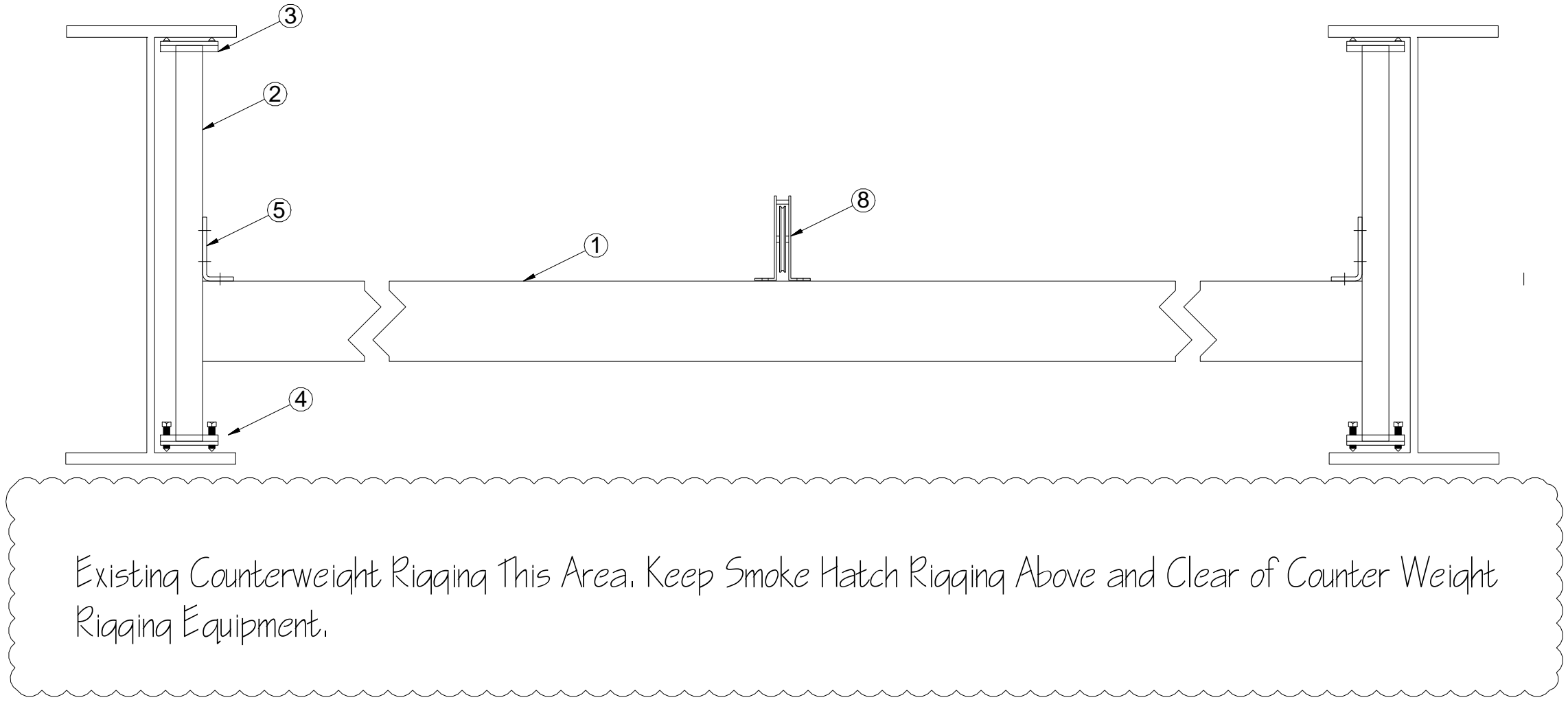
Lineset	Description	L/S Cap	Drape Size W x H	Fabric	Fullness	Side Hem	Track/Notes
1	Valance	800 lb	54' 0" X 7' 0"	Opera	50%	3" / 3"	Color TBD
2	Screen (Dead Hung)	800 lb					D.H. from Loft Beams
3	Grand Drape	800 lb	(2) 28'0" X 21'0"	Opera	50%	26" / 12"	#416P w/ Rear Fold Guides
4	1st Electric	1500 lb					Add. Double Purchase Cable Pick Line
5	Future						
6	Utility Batten	800 lb					
7	Legs	800 lb	(2) 10' 0" X 18' 6"	Prospect	50%	3" / 3"	Black
8	Future						
9	Utility Batten	800 lb					
10	Future						
11	Future						
12	Future						
13	Future						
14	Border	800 lb	58' 0" X 7' 0"	Prospect	50%	3" / 3"	Black
15	Mid-Stage Traveler	800 lb	(2) 30' 0" X 18' 6"	Prospect	50%	12" / 12"	#416S Track / Black
16	Utility Batten	800 lb					
17	2nd Electric	1500 lb					Add. Double Purchase Cable Pick Line
18	Future						
19	Utility Batten	800 lb					
20	Future						
21	Future						
22	Future						
23	Future						
24	Border	800 lb	58' 0" X 7' 0"	Prospect	50%	3" / 3"	Black
25	Legs	800 lb	(2) 10' 0" X 18' 6"	Prospect	50%	3" / 3"	Black
26	Seamless Scrim	800 lb	58' 0" X 18' 6"	Sharkstooth	0%	3" / 3"	Bottom Pipe / Black
27	3rd Electric	1500 lb					Add. Double Purchase Cable Pick Line
28	Future						
29	Utility Batten	800 lb					
30	Future						
31	Future						
32	Future						
33	Future						
34	Utility Batten	800 lb					
35	Legs	800 lb	(2) 10' 0" X 18' 6"	Prospect	50%	3" / 3"	Black
36	Future						
37	Future						
38	Future						
39	Utility Batten	800 lb					
40	Future						
41	Border	800 lb	58' 0" X 7' 0"	Prospect	50%	3" / 3"	Black
42	4th Electric	1500 lb					Add. Double Purchase Cable Pick Line
43	Future						
44	US Traveler	800 lb	(2) 30' 0" X 18' 6"	Prospect	50%	3" / 3"	#416S Track / Black
45	Utility Batten	800 lb					
46	Seamless Cyc	800 lb	58' 0" X 18' 6"	Leno	0%	3" / 3"	White

## Notes

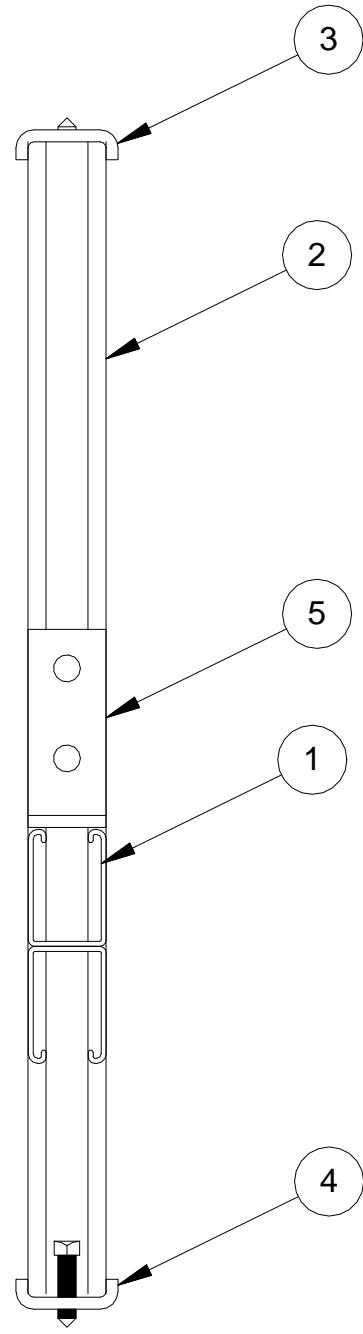
1. All Pipe Battens are 62'
2. Install full complement of T-Bar for all current and future linesets
3. Provide continuous lock rail, pre-drilled for all current and future linesets
4. Provide continuous top and bottom stop rails



1 Fire Vent Closure Winch Rigging  
(Typical of 4)



2 FVC Winch Pre-Engineered Blocking  
US/ DS View



3 FVC Winch Pre-Engineered Blocking  
SL/ SR View

ITEM	PART NO	QTY	DESCRIPTION
1	P5501	1	UNISTRUT CHANNEL 12"
2	P1000	2	UNISTRUT CHANNEL 2"
3	P3087 (A)	2	COLUMN INSERT, DEAD END
4	P3087 (B)	2	COLUMN INSERT, LIVE END
5	P1346	2	ANGLE BRACKET
6	P3010	8	CHANNEL NUT, 1/2" -13
7	HHCS60150EG	8	HEX HEAD CAP SCREW, 1/2" -13 x 1 1/2"
8	NPN	1	MULE BLOCK, 4" x 6, 1/8" GROOVE, 400LB SWL

ITEM	PART NO	QTY	DESCRIPTION
1	P5501	1	UNISTRUT CHANNEL 12"
2	P1000	2	UNISTRUT CHANNEL 2"
3	P3087 (A)	2	COLUMN INSERT, DEAD END
4	P3087 (B)	2	COLUMN INSERT, LIVE END
5	P1346	2	ANGLE BRACKET
6	P3010	8	CHANNEL NUT, 1/2" -13
7	HHCS60150EG	8	HEX HEAD CAP SCREW, 1/2" -13 x 1 1/2"

Project Team:

Structural Engineer: KPFF Consulting Engineers  
1610 Des Peres Rd, Suite 100  
St. Louis, MO 63131  
314-835-6024  
314-835-0749

MEPF Engineer: BRIC Partnership, LLC  
100 East Washington Street, Ste 220  
Belleville, IL 62220  
314-725-5889  
618-277-9227

Professional Seal:

Project Title:

PROJECT DESCRIPTION

ECC Campus Improvement & Renovation  
Hansen Hall Theater Modifications

1964 Prairie Dell Rd. Union, MO 63084

The Professional Architect's seal affixed to this sheet applies only to the material and items shown on this sheet. All drawings, instruments or other documents not exhibiting this seal shall not be considered prepared by this architect, and this architect expressly disclaims any and all responsibility for such plans, drawings or documents not exhibiting this seal.

This drawing and details on it are the sole property of the architect and may be used for the specific project only. It shall not be loaned, copied or reproduced, in whole or part, or for any other purpose or project without the written consent of the architect.

No.	Description	Date

Sheet Title:

Fire Vent Rigging

Project Number: 14434  
Drawn By:   
Author:   
Issue Date: 4.25.2016  
Sheet Number: **TR-4**

Professional Seal:

**Structural Engineer**

MEPF Engineer

MEPF Engineer BRIC Partnership, LLC  
100 East Washington Street, Ste 220  
Belleville, IL 62220  
314-725-5889  
618-277-5227

PROJECT DESCRIPTION

# ECC Campus Improvement & Renovation

## Hansen Hall Theater Modifications

19664 Prairie Dell Rd. Union, MO. 63084

This drawing and details on it are the sole property of the architect and may be used for this specific project only. It shall not be loaned, copied or reproduced, in whole or part, or for any other purpose or project without the written consent of the architect.

Sheet Title:

## Project Number:

14434

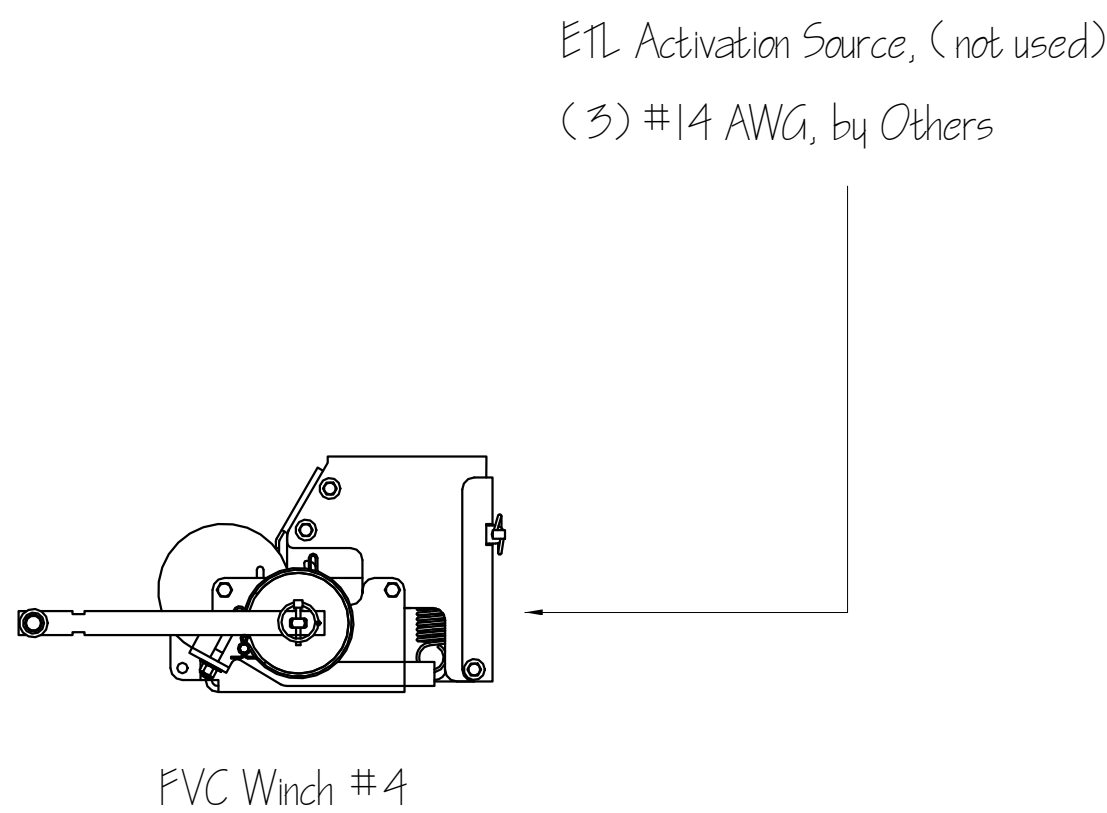
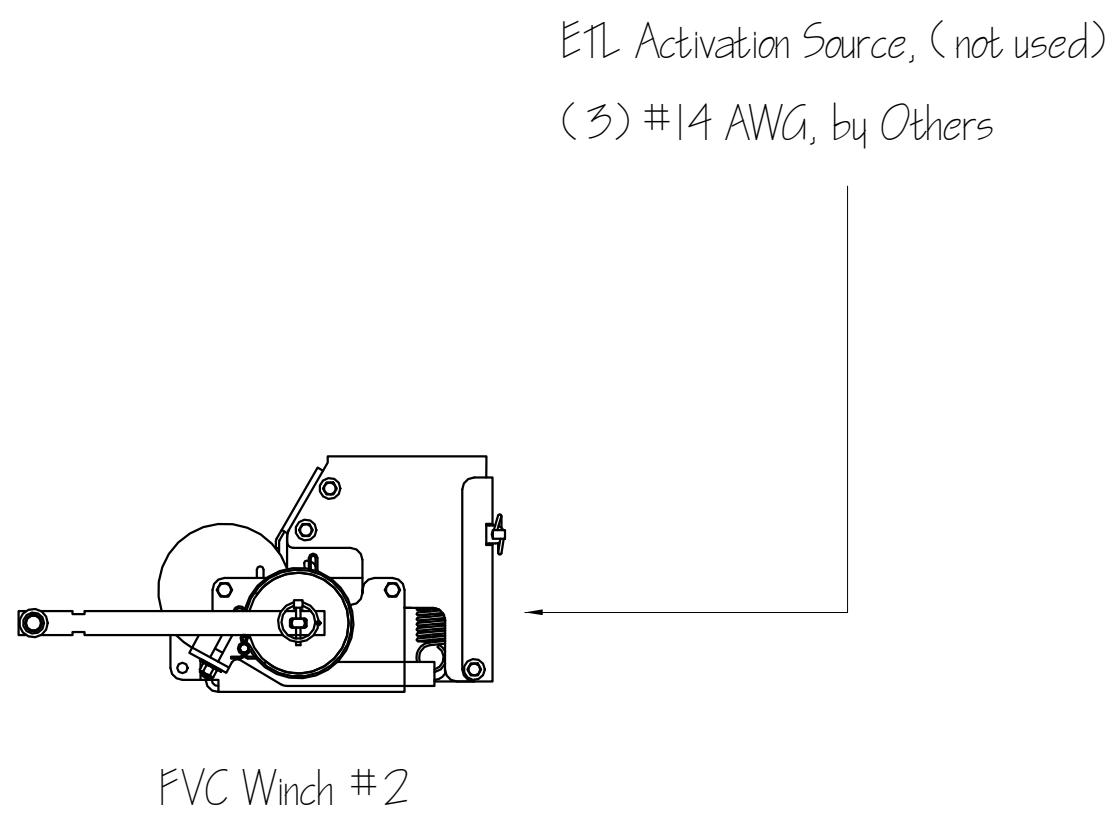
Drawn E

#### Author

Issue Date

Sheet Number:

**TR-5**



Provide ETL capable devices for future integration into fire alarm system

Cable tension to be released by Fusible Link at smoke vent