

Degree Offerings

Associate of Arts (AA)

Students who plan to transfer to a four-year college or university after East Central College often get an AA degree. Students will follow one of the pathways below to help guide them along the way.

- **ARTS AND HUMANITIES PATHWAY+**
Example Fields: English, Journalism & Mass Media, Music, Theater
- **BUSINESS PATHWAY+**
Example Fields: Business, Management
- **HEALTH SCIENCE PATHWAY+**
Example Fields: Nutrition, Pre-requisite Courses for Select Programs
- **LIBERAL STUDIES PATHWAY+**
Example Fields: Exploratory/Undecided, General Education
- **SOCIAL SCIENCE PATHWAY+**
Example Fields: History, Political Science, Psychology, Sociology
- **STEM PATHWAY+**
Example Fields: Biology, Chemistry, Engineering Technology, Mathematics, Physical Science

Associate of Applied Science (AAS)

An Associate of Applied Science (AAS) prepares students to jump right into the workforce, upon graduation.

Accounting*
Automotive Technology*
Building Construction Technology*
Business*
Computer Information Systems**
Culinary Arts*
Early Childhood Development**
Health Information Management**
Heating, Ventilation, Air Conditioning & Refrigeration*
Industrial Engineering Technology**

Medical Assistant**
Nursing*

- Traditional Pre-Licensure+
- LPN to RN Bridge+
- Practical Nursing**

Occupational Therapy Assistant
Paramedic Technology*
Precision Machining Technology**
Radiologic Technology*
Surgical Technology*
Welding*

Associate of Science (AS)

Students who plan to transfer to a four-year college or university in engineering often get an AS degree.

Associate of Arts in Teaching (AAT)+

Students who plan to transfer to a four-year college or university in teaching often get an AAT degree.

Associate of Fine Arts (AFA)

Students who plan to transfer to a four-year college or university in fine arts, graphic design or music often get an AFA degree.

+ Available at Rolla Locations * Also offered as short-term certificate



Empowering students and enriching communities through education.

UNION

1964 Prairie Dell Road
www.eastcentral.edu

ADMISSIONS
& FINANCIAL AID
636.584.6588
A+ & SCHOLARSHIPS
636.584.6574

ROLLA

500 Forum Drive
www.eastcentral.edu/rolla

ADMISSIONS
573.466.4100
A+ & SCHOLARSHIPS
573.466.4078
FINANCIAL AID
573.466.4077

Contact Us Today!



Prospective Student Form



Athletics

Baseball

returned to ECC in 2020 after a 20-year hiatus.

Men's Soccer

teams have been the conference champions eight times in the past 20 years.

Softball

is the longest sport played at ECC. The team has been competing for more than 45 years.

Women's Soccer

is the youngest program at ECC, beginning in 2020.

Women's Volleyball

teams have played in four NJCAA National Tournaments in the past 15 years.

Prospective
Athlete Form



Clubs & Organizations

ACADEMIC CLUBS

- Art Club
- DECA, Collegiate
- Engineering Club
- Health Info Management Club (SAHIM)
- National Association for Music Education, Collegiate
- Phi Theta Kappa (Union & Rolla)
- Psychology Club
- Scholar Bowl
- Student Government Association (Union & Rolla)
- Student Media
- Student Missouri State Teachers Association (Union & Rolla)
- Student Nurse Association (Union & Rolla)

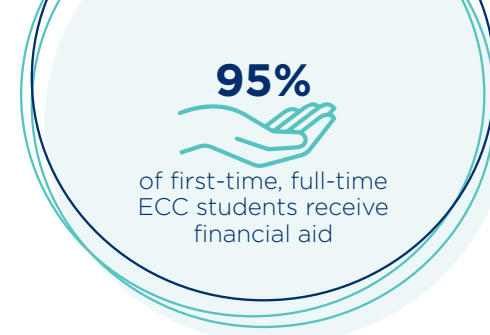
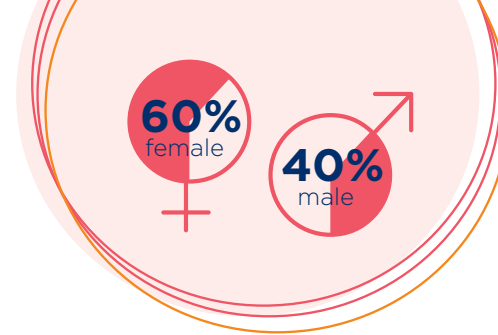
INTEREST, SERVICE & SOCIAL CLUBS

- Christian Club
- Democratic Socialists Club
- Gender & Sexualities Alliance
- Rest & Relaxation
- Rotaract

Students with a particular interest are encouraged to start their own clubs. For more information on the clubs listed above, contact the Student Activities Office located in DSSC 104 or call 636-584-6583.

Student Support

- Free Tutoring
- Success Coaches
- Workshops on Study Skills, Test Anxiety, Time Management and more!
- Library Resources & Research Assistance
- Access Services



Enrollment Checklist

- Apply for admission at apply.eastcentral.edu.
- Request official high school and college transcripts, as applicable.
- Activate student account.
- Follow the financial aid checklist.
- Take placement test, if needed.
- Register for classes with an advisor during recommended timelines below.
 - **April** for Fall Term
 - **November** for Spring & Summer Term

Financial Aid Checklist & Priority Dates

- Create Federal Student Aid (FSA) ID and complete FAFSA at studentaid.gov
- Apply for scholarships at eastcentral.edu/scholarships
- Check to ensure the financial aid file is complete via eCentral

Fall Semester
JULY 1

Spring Semester
DECEMBER 1

Summer Semester
MAY 1

